

### Anti-Hsp90 antibody [H90-10] ab58950

敲除 验证

★★★★★ [4 Abreviews](#) [3 References](#) [3 图像](#)

#### 概述

产品名称	Anti-Hsp90抗体[H90-10]
描述	小鼠单克隆抗体[H90-10] to Hsp90
宿主	Mouse
特异性	ab58950 recognizes both Hsp90 alpha and Hsp90 beta
经测试应用	<b>适用于:</b> WB, Flow Cyt
种属反应性	<b>与反应:</b> Human
免疫原	Purified full length human Hsp90 beta
阳性对照	WB: HEK-293T, Saos-2 and HL-60 cell lysates; Heat-shocked HeLa cell lysate. Flow Cyt: HeLa cells.
常规说明	<p>Dilute in PBS or medium which is identical to that used in the assay system.</p> <p>This product was changed from ascites to tissue culture supernatant on 19/12/2018. Please note that the dilutions may need to be adjusted accordingly. If you have any questions please do not hesitate to contact our scientific support team.</p> <p>The Life Science industry has been in the grips of a reproducibility crisis for a number of years. Abcam is leading the way in addressing this with our range of recombinant monoclonal antibodies and knockout edited cell lines for gold-standard validation. Please check that this product meets your needs before purchasing.</p> <p>If you have any questions, special requirements or concerns, please send us an inquiry and/or contact our Support team ahead of purchase. Recommended alternatives for this product can be found below, along with publications, customer reviews and Q&amp;As</p>

#### 性能

形式	Liquid
存放说明	Shipped at 4°C. Store at -20°C. Stable for 12 months at -20°C.
存储溶液	pH: 7.40 Constituent: 99% PBS
纯度	Protein G purified
纯化说明	Purified from TCS

克隆	单克隆
克隆编号	H90-10
同种型	IgG2a

## 应用

**The Abpromise guarantee**      **Abpromise™** 承诺保证使用ab58950于以下的经测试应用

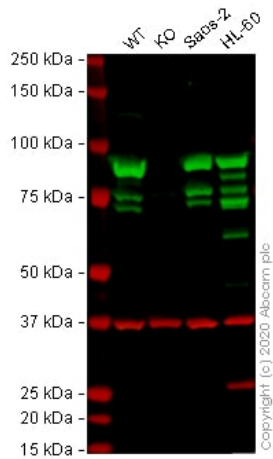
“应用说明”部分 下显示的仅为推荐的起始稀释度;实际最佳的稀释度/浓度应由使用者检定。

应用	Ab评论	说明
WB	★★★★★ (2)	Use a concentration of 1 - 5 µg/ml. Detects a band of approximately 90 kDa (predicted molecular weight: 83 kDa).
Flow Cyt		Use 0.01-0.1µg for 10 <sup>6</sup> cells. <b>ab170191</b> - Mouse monoclonal IgG2a, is suitable for use as an isotype control with this antibody.

## 靶标

<b>功能</b>	Molecular chaperone that promotes the maturation, structural maintenance and proper regulation of specific target proteins involved for instance in cell cycle control and signal transduction. Undergoes a functional cycle that is linked to its ATPase activity. This cycle probably induces conformational changes in the client proteins, thereby causing their activation. Interacts dynamically with various co-chaperones that modulate its substrate recognition, ATPase cycle and chaperone function.
<b>序列相似性</b>	Belongs to the heat shock protein 90 family.
<b>结构域</b>	The TPR repeat-binding motif mediates interaction with TPR repeat-containing proteins like the co-chaperone STUB1.
<b>翻译后修饰</b>	ISGylated. S-nitrosylated; negatively regulates the ATPase activity and the activation of eNOS by HSP90AA1.
<b>细胞定位</b>	Cytoplasm. Melanosome. Identified by mass spectrometry in melanosome fractions from stage I to stage IV.

## 图片



Western blot - Anti-Hsp90 antibody [H90-10] (ab58950)

**All lanes :** Anti-Hsp90 antibody [H90-10] (ab58950) at 0.5 µg/ml

**Lane 1 :** Wild-type HEK-293T cell lysate

**Lane 2 :** HSP90AB1 knockout HEK-293T cell lysate

**Lane 3 :** Saos-2 cell lysate

**Lane 4 :** HL-60 cell lysate

Lysates/proteins at 20 µg per lane.

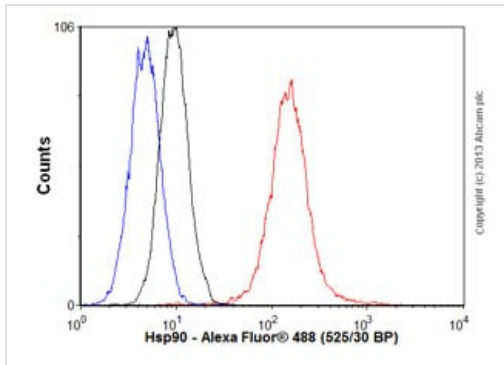
Performed under reducing conditions.

**Predicted band size:** 83 kDa

**Observed band size:** 85 kDa

**Lanes 1 - 4:** Merged signal (red and green). Green - ab58950 observed at 85 kDa. Red - loading control **ab181602** (Rabbit Anti-GAPDH antibody [EPR16891]) observed at 37kDa.

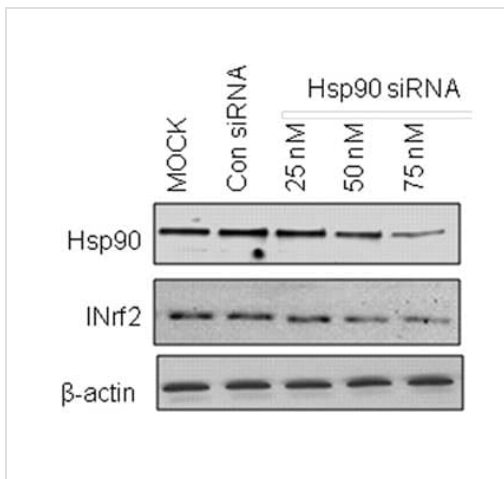
ab58950 was shown to react with Hsp90 in wild-type HEK-293T cells in western blot with loss of signal observed in HSP90AB1 knockout cell line **ab266117** (HSP90AB1 knockout cell lysate **ab257190**). Wild-type and HSP90AB1 knockout HEK-293T cell lysates were subjected to SDS-PAGE. Membranes were blocked in 3% milk in TBS-T (0.1% Tween<sup>®</sup>) before incubation with ab58950 and **ab181602** (Rabbit Anti-GAPDH antibody [EPR16891]) overnight at 4°C at 0.5 µg/ml and a 1 in 20000 dilution respectively. Blots were incubated with Goat anti-Mouse IgG H&L (IRDye<sup>®</sup> 800CW) preabsorbed (**ab216772**) and Goat anti-Rabbit IgG H&L (IRDye<sup>®</sup> 680RD) preabsorbed (**ab216777**) secondary antibodies at 1 in 20000 dilution for 1 hour at room temperature before imaging.



Flow Cytometry - Anti-Hsp90 antibody [H90-10]  
(ab58950)

Overlay histogram showing HeLa cells stained with ab58950 (red line). The cells were fixed with 4% paraformaldehyde (10 min) and then permeabilized with 0.1% PBS-Tween for 20 min. The cells were then incubated in 1x PBS / 10% normal goat serum / 0.3M glycine to block non-specific protein-protein interactions followed by the antibody (ab58950, 0.01µg/1x10<sup>6</sup> cells) for 30 min at 22°C. The secondary antibody used was Alexa Fluor® 488 goat anti-mouse IgG (H&L) ([ab150113](#)) at 1/2000 dilution for 30 min at 22°C. Isotype control antibody (black line) was mouse IgG2a [ICIGG2A] ([ab91361](#), 0.1µg/1x10<sup>6</sup> cells) used under the same conditions. Unlabelled sample (blue line) was also used as a control. Acquisition of >5,000 events were collected using a 20mW Argon ion laser (488nm) and 525/30 bandpass filter.

This image was generated using the ascites version of the product.



Western blot - Anti-Hsp90 antibody [H90-10]  
(ab58950)

Image from Niture SK et al, J Biol Chem. 2010 Nov 19;285(47):36865-75. Epub 2010 Sep 23, Fig 6. DOI 10.1074/jbc.M110.175802.

Western Blot analysis of the effect of siRNA inhibition of Hsp90 on INrf2. Murine hepatoma (Hepa-1) cells were transfected with control siRNA or Hsp90-specific siRNA and Hsp90 (ab58950), INrf2, and actin levels were analyzed by immunoblotting.

This image was generated using the ascites version of the product.

**Please note:** All products are "FOR RESEARCH USE ONLY. NOT FOR USE IN DIAGNOSTIC PROCEDURES"

### Our Abpromise to you: Quality guaranteed and expert technical support

- Replacement or refund for products not performing as stated on the datasheet
- Valid for 12 months from date of delivery
- Response to your inquiry within 24 hours

- We provide support in Chinese, English, French, German, Japanese and Spanish
- Extensive multi-media technical resources to help you
- We investigate all quality concerns to ensure our products perform to the highest standards

If the product does not perform as described on this datasheet, we will offer a refund or replacement. For full details of the Abpromise, please visit <https://www.abcam.cn/abpromise> or contact our technical team.

### **Terms and conditions**

---

- Guarantee only valid for products bought direct from Abcam or one of our authorized distributors