

Anti-Hsp90 antibody [D7a] ab59459

敲除验证

★★★★★ [9 Abreviews](#) [24 References](#) [4 图像](#)

概述

产品名称	Anti-Hsp90抗体[D7a]
描述	小鼠单克隆抗体[D7a] to Hsp90
宿主	Mouse
特异性	Can isolate complexes of HSP90, Src kinase and cec37
经测试应用	适用于: WB, IHC-P, IHC-Fr, IP, ICC/IF, Flow Cyt
种属反应性	与反应: Mouse, Rat, Rabbit, Chicken, Cow, Human, Pig
免疫原	Full length native protein (purified) corresponding to Chicken Hsp90 alpha aa 1-728. Full length protein HSP90 purified from chicken brain Database link: P11501
阳性对照	WB: HEK-293T, HEK-293, HAP1 and HeLa cell lysates. IHC-P: Human colon cancer tissue. Mouse inflamed colon tissue.
常规说明	<p>The Life Science industry has been in the grips of a reproducibility crisis for a number of years. Abcam is leading the way in addressing this with our range of recombinant monoclonal antibodies and knockout edited cell lines for gold-standard validation. Please check that this product meets your needs before purchasing.</p> <p>If you have any questions, special requirements or concerns, please send us an inquiry and/or contact our Support team ahead of purchase. Recommended alternatives for this product can be found below, along with publications, customer reviews and Q&As</p>

性能

形式	Liquid
存放说明	Shipped at 4°C. Store at +4°C short term (1-2 weeks). Upon delivery aliquot. Store at -20°C. Avoid freeze / thaw cycle.
存储溶液	pH: 7.20 Preservative: 0.09% Sodium azide Constituents: 49% PBS, 50% Glycerol (glycerin, glycerine)
纯度	Protein G purified
克隆	单克隆

克隆编号

D7a

同种型

IgG1

应用

The Abpromise guarantee **Abpromise™**承诺保证使用ab59459于以下的经测试应用

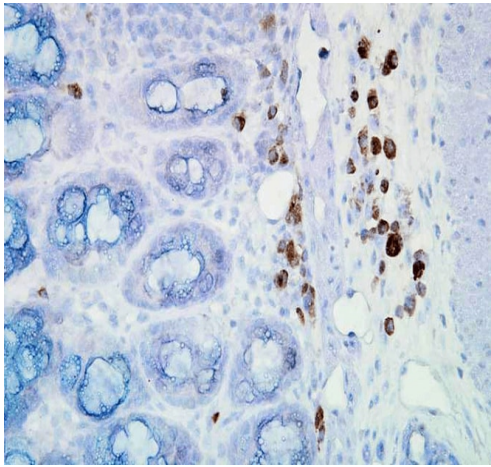
“应用说明”部分 下显示的仅为推荐的起始稀释度;实际最佳的稀释度/浓度应由使用者检定。

应用	Ab评论	说明
WB	★★★★★ (4)	1/500. Predicted molecular weight: 95 kDa.
IHC-P		1/100000. Perform heat mediated antigen retrieval with citrate buffer pH 6 before commencing with IHC staining protocol.
IHC-Fr	★★★★★ (1)	Use at an assay dependent concentration.
IP		Use at an assay dependent concentration.
ICC/IF	★★★★★ (4)	Use at an assay dependent concentration.
Flow Cyt		Use at an assay dependent concentration. ab170190 - Mouse monoclonal IgG1, is suitable for use as an isotype control with this antibody.

靶标

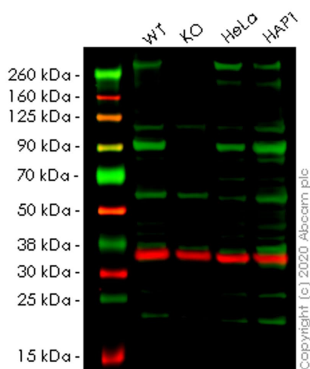
功能	Molecular chaperone that promotes the maturation, structural maintenance and proper regulation of specific target proteins involved for instance in cell cycle control and signal transduction. Undergoes a functional cycle that is linked to its ATPase activity. This cycle probably induces conformational changes in the client proteins, thereby causing their activation. Interacts dynamically with various co-chaperones that modulate its substrate recognition, ATPase cycle and chaperone function.
序列相似性	Belongs to the heat shock protein 90 family.
结构域	The TPR repeat-binding motif mediates interaction with TPR repeat-containing proteins like the co-chaperone STUB1.
翻译后修饰	ISGylated. S-nitrosylated; negatively regulates the ATPase activity and the activation of eNOS by HSP90AA1.
细胞定位	Cytoplasm. Melanosome. Identified by mass spectrometry in melanosome fractions from stage I to stage IV.

图片



Immunohistochemistry (Formalin/PFA-fixed paraffin-embedded sections) - Anti-Hsp90 antibody [D7a] (ab59459)

Immunohistochemistry analysis of ab59459 staining Hsp90 alpha in mouse inflamed colon tissue section at 1/100000 dilution for 12 hours at 4°C using antibody amplifier™ system. Biotin Goat Anti-Mouse antibody was used at 1:2000 for 1 hour at room temperature. Mayer Hematoxylin (purple/blue) nuclear stain at 200 µl for 2 minutes at room temperature was used as a counter stain. Localization: Inflammatory cells. Magnification: 40x.



Western blot - Anti-Hsp90 antibody [D7a] (ab59459)

All lanes : Anti-Hsp90 antibody [D7a] (ab59459) at 1/1000 dilution

Lane 1 : Wild-type HEK-293T (Human epithelial cell line from embryonic kidney transformed with large T antigen) whole cell lysate

Lane 2 : HSP90AA1 knockout HEK-293T (Human epithelial cell line from embryonic kidney transformed with large T antigen) whole cell lysate

Lane 3 : HeLa (Human epithelial cell line from cervix adenocarcinoma) whole cell lysate

Lane 4 : HAP1 whole cell lysate

Lysates/proteins at 20 µg per lane.

Secondary

All lanes : Goat Anti-Rabbit IgG H&L (IRDye® 680RD) preadsorbed ([ab216777](#)) at 1/10000 dilution

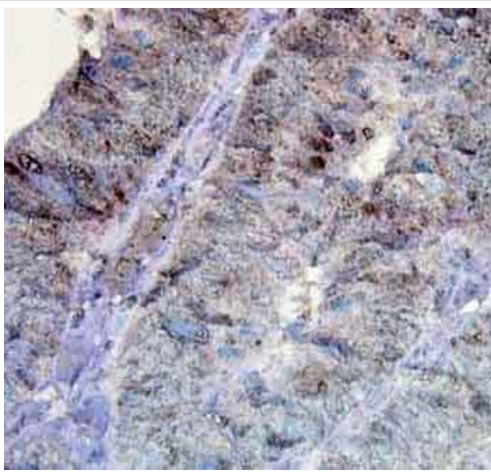
Predicted band size: 95 kDa

Observed band size: 90 kDa

Lanes 1-4: Merged signal (red and green). Green - ab59459 observed at 90 kDa. Red - loading control [ab181602](#) observed at 36 kDa.

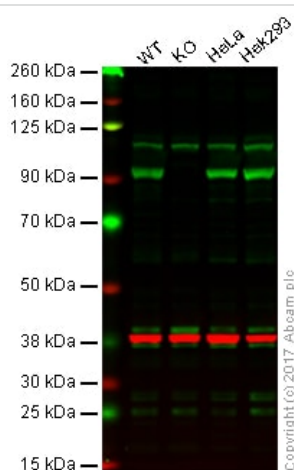
ab59459 Anti-Hsp90 antibody [D7a] was shown to specifically

react with Hsp90 in wild-type HEK-293T cells. Loss of signal was observed when knockout cell line [ab266591](#) (knockout cell lysate [ab258458](#)) was used. Wild-type and Hsp90 knockout samples were subjected to SDS-PAGE. [ab59459](#) and Anti-GAPDH antibody[EPR16891] - Loading Control ([ab181602](#)) were incubated overnight at 4°C at 1 in 1000 dilution and 1 in 20000 dilution respectively. Blots were developed with Goat anti-Rabbit IgG H&L (IRDye® 680RD) preadsorbed ([ab216777](#)) and Goat anti-Mouse IgG H&L (IRDye® 800CW) preadsorbed ([ab216772](#)) secondary antibodies at 1 in 20000 dilution for 1 hour at room temperature before imaging.



Immunohistochemistry (Formalin/PFA-fixed paraffin-embedded sections) - Anti-Hsp90 antibody [D7a] ([ab59459](#))

[ab59459](#) staining Hsp90 alpha in human colon cancer tissue section by immunohistochemistry (Bouin's fixed paraffin embedded tissue sections). Tissue underwent heat mediated antigen retrieval in microwave in citrate buffer. The primary antibody was used at dilution of 1/100,000 dilution using antibody amplifier™ system.



Western blot - Anti-Hsp90 antibody [D7a] ([ab59459](#))

Lane 1: Wild-type HAP1 whole cell lysate (20 µg)

Lane 2: Hsp90 knockout HAP1 whole cell lysate (20 µg)

Lane 3: HeLa whole cell lysate (20 µg)

Lane 4: Hek 293 whole cell lysate (20 µg)

Lanes 1 - 4: Merged signal (red and green). Green - [ab59459](#) observed at 90 kDa. Red - loading control, [ab181602](#), observed at 37 kDa.

[ab59459](#) was shown to specifically recognize Hsp90 in wild-type HAP1 cells along with additional cross reactive bands. No band was observed when Hsp90 knockout cells were examined. Wild-type and Hsp90 knockout samples were subjected to SDS-PAGE. [Ab59459](#) and [ab181602](#) (Rabbit anti GAPDH loading control) were incubated overnight at 4°C at 1/500 dilution and 1/20,000 dilution respectively. Blots were developed with Goat anti-Mouse IgG H&L (IRDye® 800CW) preabsorbed ([ab216772](#)) and Goat anti-Rabbit IgG H&L (IRDye® 680RD) preabsorbed ([ab216777](#)) secondary

antibodies at 1/20,000 dilution for 1 hour at room temperature before imaging.

Please note: All products are "FOR RESEARCH USE ONLY. NOT FOR USE IN DIAGNOSTIC PROCEDURES"

Our Abpromise to you: Quality guaranteed and expert technical support

- Replacement or refund for products not performing as stated on the datasheet
- Valid for 12 months from date of delivery
- Response to your inquiry within 24 hours
- We provide support in Chinese, English, French, German, Japanese and Spanish
- Extensive multi-media technical resources to help you
- We investigate all quality concerns to ensure our products perform to the highest standards

If the product does not perform as described on this datasheet, we will offer a refund or replacement. For full details of the Abpromise, please visit <https://www.abcam.cn/abpromise> or contact our technical team.

Terms and conditions

- Guarantee only valid for products bought direct from Abcam or one of our authorized distributors