

### Anti-Hsp90 antibody ab13495

★★★★★ [14 Abreviews](#) [56 References](#) [4 图像](#)

#### 概述

|       |   |
|-------|---|
| 产品名称  | Anti-Hsp90抗体  |
| 描述    | 兔多克隆抗体to Hsp90  |
| 宿主    | Rabbit  |
| 特异性   | Detects 90kD proteins corresponding to the molecular mass of hsp90aβ.   |
| 经测试应用 | <b>适用于:</b> ICC/IF, IHC-P, ICC, IHC-Fr, ELISA, IP, Flow Cyt, WB   |
| 种属反应性 | <b>与反应:</b> Mouse, Rat, Human, Xenopus laevis   |
| 免疫原   | Full length protein corresponding to Human Hsp90.<br>Database link: <a href="#">P08238</a>  |
| 阳性对照  | ICC: Heat Shocked Cervical cancer cell line (HeLa).   |
| 常规说明  | <p>The Life Science industry has been in the grips of a reproducibility crisis for a number of years. Abcam is leading the way in addressing this with our range of recombinant monoclonal antibodies and knockout edited cell lines for gold-standard validation. Please check that this product meets your needs before purchasing.</p> <p>If you have any questions, special requirements or concerns, please send us an inquiry and/or contact our Support team ahead of purchase. Recommended alternatives for this product can be found below, along with publications, customer reviews and Q&amp;As</p> |

#### 性能

|      |   |
|------|---|
| 形式   | Liquid  |
| 存放说明 | Shipped at 4°C. Store at +4°C short term (1-2 weeks). Upon delivery aliquot. Store at -20°C long term. Avoid freeze / thaw cycle. |
| 存储溶液 | Preservative: 0.09% Sodium azide<br>Constituents: PBS, 50% Glycerol (glycerin, glycerine)   |
| 纯度   | Protein A purified  |
| 克隆   | 多克隆   |
| 同种型  | IgG   |

#### 应用

## The Abpromise guarantee

**Abpromise™** 承诺保证使用 ab13495 于以下的经测试应用

“应用说明”部分 下显示的仅为推荐的起始稀释度; 实际最佳的稀释度/浓度应由使用者检定。

| 应用       | Ab 评论     | 说明   |
|----------|-----------|--|
| ICC/IF   | ★★★★★ (3) | 1/100.   |
| IHC-P    | ★★★★★ (1) | Use at an assay dependent concentration.   |
| ICC      | ★★★★★ (1) | Use at an assay dependent concentration.   |
| IHC-Fr   |           | Use at an assay dependent concentration.   |
| ELISA    |           | Use at an assay dependent concentration.   |
| IP       | ★★★★★ (1) | Use at an assay dependent concentration.   |
| Flow Cyt | ★★★★★ (1) | Use at an assay dependent concentration.<br>See Abreview. <b>ab171870</b> - Rabbit polyclonal IgG, is suitable for use as an isotype control with this antibody. |
| WB       | ★★★★★ (7) | 1/20000 - 1/40000. Detects a band of approximately 90 kDa (predicted molecular weight: 85 kDa).  |

## 靶标

### 功能

Molecular chaperone that promotes the maturation, structural maintenance and proper regulation of specific target proteins involved for instance in cell cycle control and signal transduction. Undergoes a functional cycle that is linked to its ATPase activity. This cycle probably induces conformational changes in the client proteins, thereby causing their activation. Interacts dynamically with various co-chaperones that modulate its substrate recognition, ATPase cycle and chaperone function.

### 序列相似性

Belongs to the heat shock protein 90 family.

### 结构域

The TPR repeat-binding motif mediates interaction with TPR repeat-containing proteins like the co-chaperone STUB1.

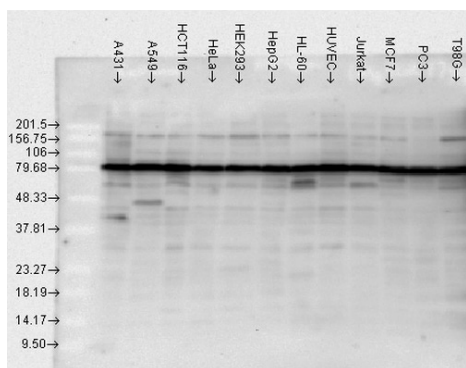
### 翻译后修饰

ISGylated.  
S-nitrosylated; negatively regulates the ATPase activity and the activation of eNOS by HSP90AA1.

### 细胞定位

Cytoplasm. Melanosome. Identified by mass spectrometry in melanosome fractions from stage I to stage IV.

## 图片



Western blot - Anti-Hsp90 antibody (ab13495)

**All lanes** : Anti-Hsp90 antibody (ab13495) at 1/10000 dilution (2 hours at room temperature)

**Lane 1** : A431 with BSA for 30 minutes at room temperature

**Lane 2** : A549 with BSA for 30 minutes at room temperature

**Lane 3** : HCT116 with BSA for 30 minutes at room temperature

**Lane 4** : HeLa with BSA for 30 minutes at room temperature

**Lane 5** : HEK293 with BSA for 30 minutes at room temperature

**Lane 6** : HepG2 with BSA for 30 minutes at room temperature

**Lane 7** : HL-60 with BSA for 30 minutes at room temperature

**Lane 8** : HUVEC with BSA for 30 minutes at room temperature

**Lane 9** : Jurkat with BSA for 30 minutes at room temperature

**Lane 10** : MCF7 with BSA for 30 minutes at room temperature

**Lane 11** : PC3 with BSA for 30 minutes at room temperature

**Lane 12** : T98G with BSA for 30 minutes at room temperature

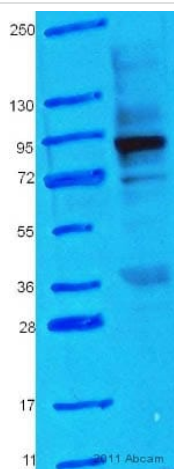
Lysates/proteins at 2 µg per lane.

Blocking peptides at 1.5 % per lane.

### Secondary

**All lanes** : HRP Donkey anti-rabbit IgG, 1 hour at room temperature

**Predicted band size:** 85 kDa



Western blot - Anti-Hsp90 antibody (ab13495)

Image courtesy of Dr Mahesh Shivananjappa by Abreview.

Anti-Hsp90 antibody (ab13495) at 1/1000 dilution + whole cell lysate prepared from human platelets treated with A23187 for 1 hour at 20 µg

### Secondary

HRP conjugated goat anti-rabbit polyclonal at 1/10000 dilution

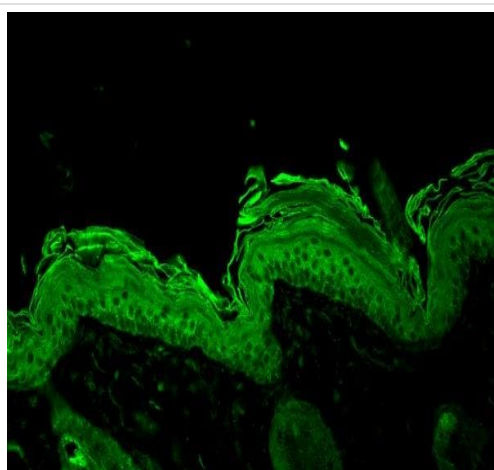
Developed using the ECL technique.

**Predicted band size:** 85 kDa

**Observed band size:** 90 kDa

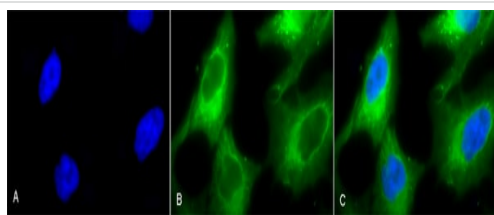
**Additional bands at:** 36 kDa. We are unsure as to the identity of these extra bands.

**Exposure time:** 5 minutes



Immunohistochemistry (Formalin/PFA-fixed paraffin-embedded sections) - Anti-Hsp90 antibody (ab13495)

ab13495 staining Hsp90 in Mouse backskin tissue sections by Immunohistochemistry (IHC-P - paraformaldehyde-fixed, paraffin-embedded sections). Tissue was fixed with Bouin's fixative solution. Samples were incubated with primary antibody (1/100) for 1 hour at room temperature. A FITC-conjugated Goat anti-rabbit IgG polyclonal (1/50) was used as the secondary antibody.



Immunocytochemistry/ Immunofluorescence - Anti-Hsp90 antibody (ab13495)

Immunofluorescent analysis of 2% paraformaldehyde fixed Heat Shocked Cervical cancer cell line (HeLa) for 20min at RT, labelling Hsp90 with ab13495 at 1/100 dilution for 12 hours at 4°C, followed by secondary antibody Goat Anti-Rabbit (FITC) (green) at 1/200 dilution for 2 hours at RT. Image showing cytoplasmic staining on HeLa cells. (A) DAPI (blue) nuclear stain. (B) Anti-Hsp90 Antibody (green) (C) Composite image.

**Please note:** All products are "FOR RESEARCH USE ONLY. NOT FOR USE IN DIAGNOSTIC PROCEDURES"

### Our Abpromise to you: Quality guaranteed and expert technical support

- Replacement or refund for products not performing as stated on the datasheet
- Valid for 12 months from date of delivery
- Response to your inquiry within 24 hours
- We provide support in Chinese, English, French, German, Japanese and Spanish
- Extensive multi-media technical resources to help you
- We investigate all quality concerns to ensure our products perform to the highest standards

If the product does not perform as described on this datasheet, we will offer a refund or replacement. For full details of the Abpromise, please visit <https://www.abcam.cn/abpromise> or contact our technical team.

### Terms and conditions

- Guarantee only valid for products bought direct from Abcam or one of our authorized distributors