

Anti-Hsp60 antibody [LK-2] ab59458

★★★★★ [1 Abreviews](#) [6 References](#) [5 图像](#)

概述

|       |   |
|-------|---|
| 产品名称  | Anti-Hsp60抗体[LK-2]  |
| 描述    | 小鼠单克隆抗体[LK-2] to Hsp60  |
| 宿主    | Mouse   |
| 特异性   | Detects ~60kDa.   |
| 经测试应用 | <b>适用于:</b> IHC-P, WB   |
| 种属反应性 | <b>与反应:</b> Mouse, Human  |
| 免疫原   | Human Hsp60 produced through recombinant DNA methods in <i>E.coli</i>   |
| 阳性对照  | HeLa cell lysate  |
| 常规说明  | <p>The Life Science industry has been in the grips of a reproducibility crisis for a number of years. Abcam is leading the way in addressing this with our range of recombinant monoclonal antibodies and knockout edited cell lines for gold-standard validation. Please check that this product meets your needs before purchasing.</p> <p>If you have any questions, special requirements or concerns, please send us an inquiry and/or contact our Support team ahead of purchase. Recommended alternatives for this product can be found below, along with publications, customer reviews and Q&amp;As</p> |

性能

|      |   |
|------|---|
| 形式   | Liquid  |
| 存放说明 | Shipped at 4°C. Store at -20°C. Stable for 12 months at -20°C.                            |
| 存储溶液 | Preservative: 0.09% Sodium azide<br>Constituents: PBS, 50% Glycerol (glycerin, glycerine) |
| 克隆   | 单克隆   |
| 克隆编号 | LK-2  |
| 同种型  | IgG1  |

应用

The Abpromise guarantee [Abpromise™](#) 承诺保证使用ab59458于以下的经测试应用

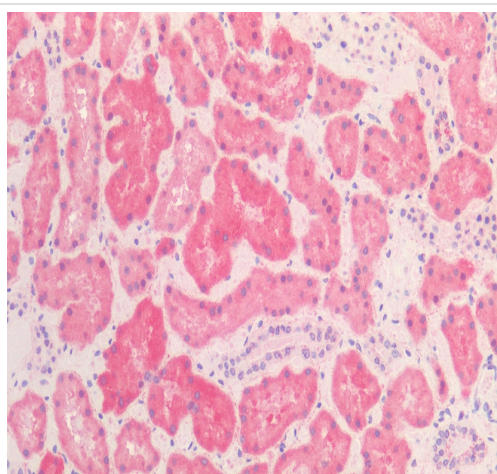
“应用说明”部分 下显示的仅为推荐的起始稀释度;实际最佳的稀释度/浓度应由使用者检定。

| 应用    | Ab评论      | 说明   |
|-------|-----------|--|
| IHC-P |           | 1/100.                                       |
| WB    | ★★★★★ (1) | 1/40000. Predicted molecular weight: 60 kDa. |

## 靶标

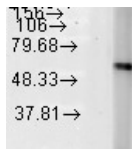
|       |   |
|-------|---|
| 功能    | Implicated in mitochondrial protein import and macromolecular assembly. May facilitate the correct folding of imported proteins. May also prevent misfolding and promote the refolding and proper assembly of unfolded polypeptides generated under stress conditions in the mitochondrial matrix.  |
| 疾病相关  | Defects in HSPD1 are a cause of spastic paraplegia autosomal dominant type 13 (SPG13) [MIM:605280]. Spastic paraplegia is a degenerative spinal cord disorder characterized by a slow, gradual, progressive weakness and spasticity of the lower limbs.<br>Defects in HSPD1 are the cause of leukodystrophy hypomyelinating type 4 (HLD4) [MIM:612233]; also called mitochondrial HSP60 chaperonopathy or MitCHAP-60 disease. HLD4 is a severe autosomal recessive hypomyelinating leukodystrophy. Clinically characterized by infantile-onset rotary nystagmus, progressive spastic paraplegia, neurologic regression, motor impairment, profound mental retardation. Death usually occurs within the first two decades of life. |
| 序列相似性 | Belongs to the chaperonin (HSP60) family.   |
| 细胞定位  | Mitochondrion matrix.   |

## 图片



Immunohistochemistry analysis of Paraffin Embedded Human kidney tissue using Mouse Anti-HSP60 Antibody, Clone LK2 (SMC-111) at 1/100 dilution.

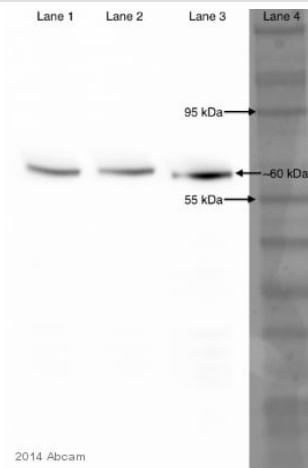
Immunohistochemistry (Formalin/PFA-fixed paraffin-embedded sections) - Anti-Hsp60 antibody [LK-2] (ab59458)



Western blot - Anti-Hsp60 antibody [LK-2] (ab59458)

Anti-Hsp60 antibody [LK-2] (ab59458) at 1/1000 dilution + HeLa cell lysate

**Predicted band size:** 60 kDa



Western blot - Anti-Hsp60 antibody [LK-2] (ab59458)

This image is courtesy of an anonymous Abreview

**Lanes 1-3 :** Anti-Hsp60 antibody [LK-2] (ab59458) at 1/4000 dilution

**Lanes 1-3 :** Saccharomyces cerevisiae whole cell lysate at 6900000 cells

**Lane 4 :** Ladder

### Secondary

**Lanes 1-2 :** HRP-conjugated goat anti-mouse IgG monoclonal at 1/5000 dilution

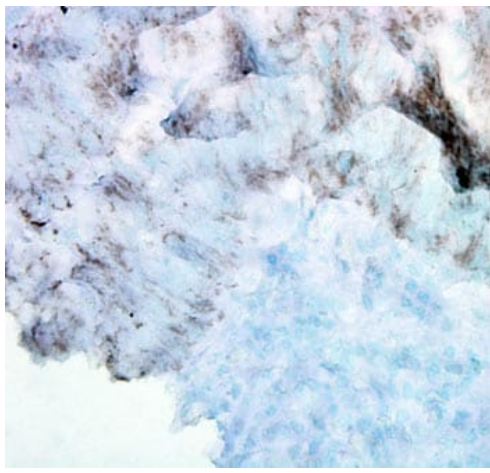
**Lane 3 :** HRP-conjugated goat anti-mouse IgG monoclonal at 1/2000 dilution

Performed under reducing conditions.

**Predicted band size:** 60 kDa

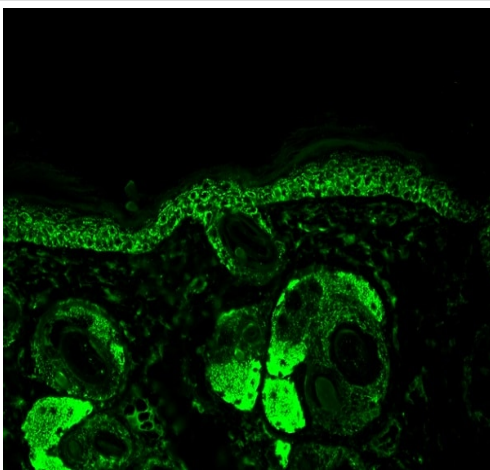
**Observed band size:** 60 kDa

**Exposure time:** 25 seconds



Immunohistochemistry (Formalin/PFA-fixed paraffin-embedded sections) - Anti-Hsp60 antibody [LK-2] (ab59458)

**ab59464** at 100,000 dilution staining Hsp60 alpha in human colon tissue section by Immunohistochemistry (Bouin's fixed paraffin embedded tissue sections). Tissue underwent heat mediated antigen retrieval in microwave with 2, 5 minutes incubation intervals in citrate buffer. An antibody amplifier™ system was used for staining. A HRP-conjugated anti mouse secondary was used at 1/10 dilution.



Immunohistochemistry (Formalin/PFA-fixed paraffin-embedded sections) - Anti-Hsp60 antibody [LK-2] (ab59458)

Paraffin-embedded mouse back skin tissue stained for Hsp60 using ab59458 at 1/100 dilution in immunohistochemical analysis. DAB staining.

**Please note:** All products are "FOR RESEARCH USE ONLY. NOT FOR USE IN DIAGNOSTIC PROCEDURES"

### Our Abpromise to you: Quality guaranteed and expert technical support

- Replacement or refund for products not performing as stated on the datasheet
- Valid for 12 months from date of delivery
- Response to your inquiry within 24 hours
- We provide support in Chinese, English, French, German, Japanese and Spanish
- Extensive multi-media technical resources to help you
- We investigate all quality concerns to ensure our products perform to the highest standards

If the product does not perform as described on this datasheet, we will offer a refund or replacement. For full details of the Abpromise,

please visit <https://www.abcam.cn/abpromise> or contact our technical team.

## Terms and conditions

---

- Guarantee only valid for products bought direct from Abcam or one of our authorized distributors