

Anti-Hsp60 antibody [EP1006Y] - Loading Control ab45134

重组 RabMAb

★★★★★ **1 Abreviews** **15 References** **8 图像**

概述

产品名称	Anti-Hsp60抗体[EP1006Y] - Loading Control
描述	兔单克隆抗体[EP1006Y] to Hsp60 - Loading Control
宿主	Rabbit
经测试应用	适用于: IHC-P, WB 不适用于: Flow Cyt, ICC/IF or IP
种属反应性	与反应: Mouse, Rat, Human
免疫原	Synthetic peptide corresponding to Human Hsp60 aa 400-500 (internal sequence).
阳性对照	T47D cell lysate, human breast carcinoma tissue.
常规说明	This product is a recombinant monoclonal antibody, which offers several advantages including: - High batch-to-batch consistency and reproducibility - Improved sensitivity and specificity - Long-term security of supply - Animal-free production For more information see here . Our RabMAb [®] technology is a patented hybridoma-based technology for making rabbit monoclonal antibodies. For details on our patents, please refer to RabMAb[®] patents .

性能

形式	Liquid
存放说明	Shipped at 4°C. Upon delivery aliquot and store at -20°C. Avoid freeze / thaw cycles.
存储溶液	pH: 7.20 Preservative: 0.01% Sodium azide Constituents: 59% PBS, 40% Glycerol (glycerin, glycerine), 0.5% BSA
纯度	Protein A purified
克隆	单克隆
克隆编号	EP1006Y
同种型	IgG

应用

The Abpromise guarantee **Abpromise™承诺保证使用ab45134于以下的经测试应用**

“应用说明”部分 下显示的仅为推荐的起始稀释度;实际最佳的稀释度/浓度应由使用者检定。

应用	Ab评论	说明
IHC-P		1/100 - 1/250. Perform heat mediated antigen retrieval before commencing with IHC staining protocol.
WB	★★★★★ (1)	1/1000 - 1/10000. Detects a band of approximately 60 kDa (predicted molecular weight: 60 kDa).

应用说明 Is unsuitable for Flow Cyt, ICC/IF or IP.

靶标

功能	Implicated in mitochondrial protein import and macromolecular assembly. May facilitate the correct folding of imported proteins. May also prevent misfolding and promote the refolding and proper assembly of unfolded polypeptides generated under stress conditions in the mitochondrial matrix.
----	--

疾病相关

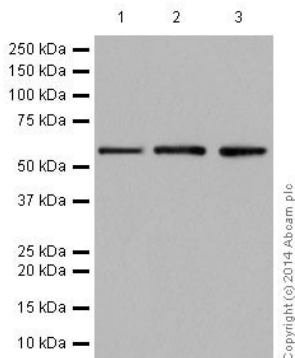
Defects in HSPD1 are a cause of spastic paraplegia autosomal dominant type 13 (SPG13) [MIM:605280]. Spastic paraplegia is a degenerative spinal cord disorder characterized by a slow, gradual, progressive weakness and spasticity of the lower limbs.

Defects in HSPD1 are the cause of leukodystrophy hypomyelinating type 4 (HLD4) [MIM:612233]; also called mitochondrial HSP60 chaperonopathy or MitCHAP-60 disease. HLD4 is a severe autosomal recessive hypomyelinating leukodystrophy. Clinically characterized by infantile-onset rotary nystagmus, progressive spastic paraplegia, neurologic regression, motor impairment, profound mental retardation. Death usually occurs within the first two decades of life.

序列相似性 Belongs to the chaperonin (HSP60) family.

细胞定位 Mitochondrion matrix.

图片



Western blot - Anti-Hsp60 antibody [EP1006Y] - Loading Control (ab45134)

All lanes : Anti-Hsp60 antibody [EP1006Y] - Loading Control (ab45134) at 1/20000 dilution

Lane 1 : T47-D (Human mammary gland ductal carcinoma) whole cell lysates

Lane 2 : HeLa (Human cervix adenocarcinoma) whole cell lysates

Lane 3 : 293T (Human embryonic kidney) whole cell lysates

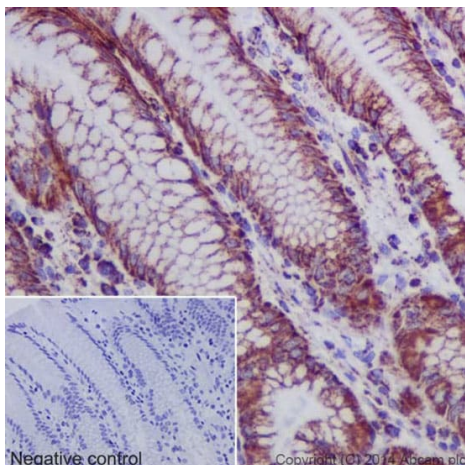
Lysates/proteins at 20 µg per lane.

Secondary

All lanes : Goat Anti-Rabbit IgG, (H+L), Peroxidase conjugated at 1/1000 dilution

Predicted band size: 60 kDa

Blocking/dilution buffer: 5% NFDM /TBST

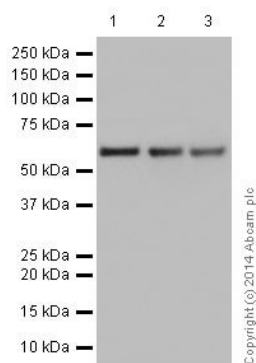


Immunohistochemistry (Formalin/PFA-fixed paraffin-embedded sections) - Anti-Hsp60 antibody [EP1006Y] - Loading Control (ab45134)

Immunohistochemistry analysis of paraffin-embedded Human stomach labeling Hsp60 with ab45134 at a 1/200 dilution. Cytoplasmic staining on the glandular epithelium of the Human stomach shown. Secondary antibody **ab97051** Goat Anti-Rabbit IgG H&L (HRP) used at a 1/500 dilution. Counter stained with Hematoxylin.

Inset image: negative control obtained using PBS instead of ab45134, secondary antibody is Anti-Rabbit HRP (**ab97051**) at 1/500 dilution

Perform heat mediated antigen retrieval before commencing with IHC staining protocol.



Western blot - Anti-Hsp60 antibody [EP1006Y] -
Loading Control (ab45134)

All lanes : Anti-Hsp60 antibody [EP1006Y] - Loading Control
(ab45134) at 1/50000 dilution

Lane 1 : Human fetal brain lysates

Lane 2 : Human fetal heart lysates

Lane 3 : Human fetal kidney lysates

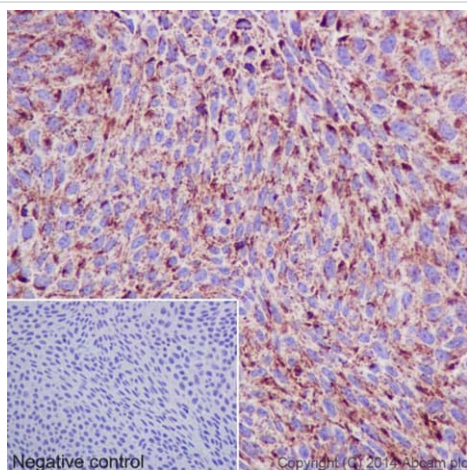
Lysates/proteins at 10 µg per lane.

Secondary

All lanes : Anti-Rabbit IgG (HRP), specific to the non-reduced form
of IgG at 1/1000 dilution

Predicted band size: 60 kDa

Blocking/dilution buffer: 5% NFDM /TBST

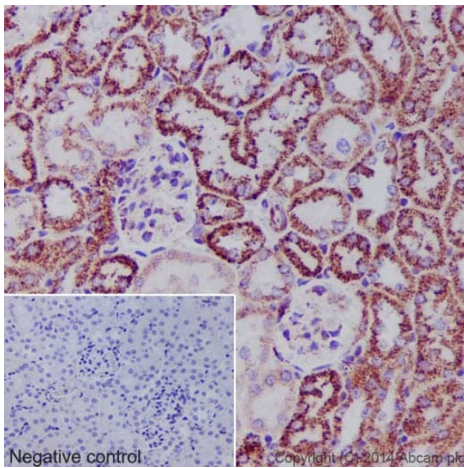


Immunohistochemistry (Formalin/PFA-fixed paraffin-
embedded sections) - Anti-Hsp60 antibody
[EP1006Y] - Loading Control (ab45134)

Immunohistochemistry analysis of paraffin-embedded Human
transitional carcinoma of bladder labeling Hsp60 with ab45134 at a
1/200 dilution. Cytoplasmic staining on tumor cells of the Human
bladder transitional cell carcinoma shown. Secondary antibody
ab97051 Goat Anti-Rabbit IgG H&L (HRP) used at a 1/500 dilution.
Counter stained with Hematoxylin.

Inset image: negative control obtained using PBS instead of
ab45134, secondary antibody is Anti-Rabbit HRP (**ab97051**) at
1/500 dilution

Perform heat mediated antigen retrieval before commencing with
IHC staining protocol.

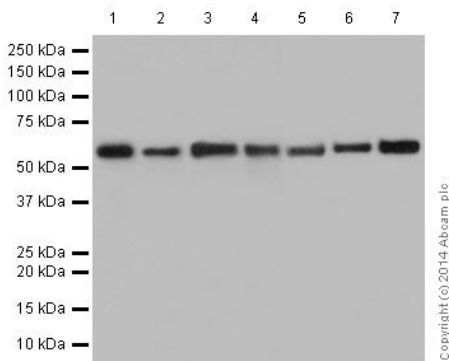


Immunohistochemistry (Formalin/PFA-fixed paraffin-embedded sections) - Anti-Hsp60 antibody [EP1006Y] - Loading Control (ab45134)

Immunohistochemistry analysis of paraffin-embedded Mouse kidney labeling Hsp60 with ab45134 at a 1/200 dilution. Cytoplasmic staining on the epithelium of Mouse kidney tubules shown. Secondary antibody **ab97051** Goat Anti-Rabbit IgG H&L (HRP) used at a 1/500 dilution. Counter stained with Hematoxylin.

Inset image: negative control obtained using PBS instead of ab45134, secondary antibody is Anti-Rabbit HRP (**ab97051**) at 1/500 dilution

Perform heat mediated antigen retrieval before commencing with IHC staining protocol.



Western blot - Anti-Hsp60 antibody [EP1006Y] - Loading Control (ab45134)

All lanes : Anti-Hsp60 antibody [EP1006Y] - Loading Control (ab45134) at 1/50000 dilution

Lane 1 : Mouse brain lysates

Lane 2 : Mouse heart lysates

Lane 3 : Rat brain lysates

Lane 4 : Rat heart lysates

Lane 5 : Raw264.7 (Mouse abelson murine leukemia virus-induced tumor) whole cell lysates

Lane 6 : PC-12 (Rat adrenal gland pheochromocytoma) whole cell lysates

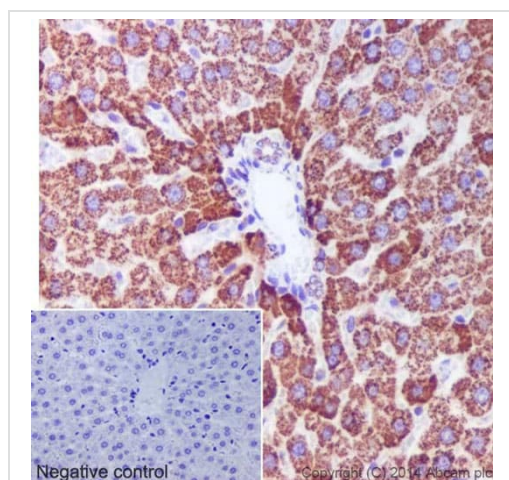
Lane 7 : NIH/3T3 (Mouse embryo) whole cell lysates

Lysates/proteins at 10 µg per lane.

Secondary

All lanes : Goat Anti-Rabbit IgG, (H+L), Peroxidase conjugated at 1/1000 dilution

Predicted band size: 60 kDa



Immunohistochemistry analysis of paraffin-embedded Rat liver labeling Hsp60 with ab45134 at a 1/200 dilution. Cytoplasmic staining on the hepatocytes of the Rat liver shown. Secondary antibody **ab97051** Goat Anti-Rabbit IgG H&L (HRP) used at a 1/500 dilution. Counter stained with Hematoxylin.

Inset image: negative control obtained using PBS instead of ab45134, secondary antibody is Anti-Rabbit HRP (**ab97051**) at 1/500 dilution

Perform heat mediated antigen retrieval before commencing with IHC staining protocol.

Immunohistochemistry (Formalin/PFA-fixed paraffin-embedded sections) - Anti-Hsp60 antibody [EP1006Y] - Loading Control (ab45134)

Why choose a recombinant antibody?

 <p>Research with confidence Consistent and reproducible results</p>	 <p>Long-term and scalable supply Recombinant technology</p>
 <p>Success from the first experiment Confirmed specificity</p>	 <p>Ethical standards compliant Animal-free production</p>

Anti-Hsp60 antibody [EP1006Y] - Loading Control (ab45134)

Please note: All products are "FOR RESEARCH USE ONLY. NOT FOR USE IN DIAGNOSTIC PROCEDURES"

Our Abpromise to you: Quality guaranteed and expert technical support

- Replacement or refund for products not performing as stated on the datasheet
- Valid for 12 months from date of delivery
- Response to your inquiry within 24 hours

- We provide support in Chinese, English, French, German, Japanese and Spanish
- Extensive multi-media technical resources to help you
- We investigate all quality concerns to ensure our products perform to the highest standards

If the product does not perform as described on this datasheet, we will offer a refund or replacement. For full details of the Abpromise, please visit <https://www.abcam.cn/abpromise> or contact our technical team.

Terms and conditions

- Guarantee only valid for products bought direct from Abcam or one of our authorized distributors