


### Anti-Hsp60 antibody ab46798

★★★★★ [13 Abreviews](#) [114 References](#) [16 图像](#)

#### 概述

产品名称	Anti-Hsp60抗体
描述	兔多克隆抗体to Hsp60
宿主	Rabbit
特异性	Replenishment batches of our polyclonal antibody, ab46798 are tested in WB. Previous batches were additionally validated in Flow Cyt, ICC/IF, IHC-P and IP. These applications are still expected to work and are covered by our Abpromise guarantee. You may also be interested in our alternative recombinant antibody, <a href="#">ab190828</a> .
经测试应用	<b>适用于:</b> WB, IHC-P, ICC/IF, IP, Flow Cyt (Intra)
种属反应性	<b>与反应:</b> Mouse, Rat, Human, Pig <b>预测可用于:</b> Chicken, Hamster, Cow, Arabidopsis thaliana, Chlamydomonas reinhardtii, Orangutan, Secale cereale, Brassica napus, Heliothis virescens, Syntrophobacter fumaroxidans, Methyacidiphilum infernorum, Thermodesulfovibrio yellowstonii, Pisum sativum 
免疫原	Synthetic peptide. This information is proprietary to Abcam and/or its suppliers.
阳性对照	IHC: Human liver.
常规说明	<p>The Life Science industry has been in the grips of a reproducibility crisis for a number of years. Abcam is leading the way in addressing this with our range of recombinant monoclonal antibodies and knockout edited cell lines for gold-standard validation. Please check that this product meets your needs before purchasing.</p> <p>If you have any questions, special requirements or concerns, please send us an inquiry and/or contact our Support team ahead of purchase. Recommended alternatives for this product can be found below, along with publications, customer reviews and Q&amp;As</p>

#### 性能

形式	Liquid
存放说明	Shipped at 4°C. Store at +4°C short term (1-2 weeks). Upon delivery aliquot. Store at -20°C. Avoid freeze / thaw cycle.
存储溶液	pH: 7.20 Preservative: 0.01% Sodium azide Constituents: 59% PBS, 40% Glycerol (glycerin, glycerine), 0.05% BSA
纯度	Immunogen affinity purified

克隆

多克隆

同种型

IgG

应用

The Abpromise guarantee

Abpromise™承诺保证使用ab46798于以下的经测试应用

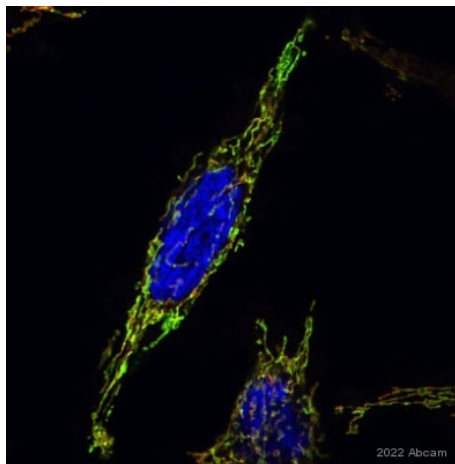
“应用说明”部分 下显示的仅为推荐的起始稀释度;实际最佳的稀释度/浓度应由使用者检定。

应用	Ab评论	说明
WB	★★★★★ (8)	1/20000. Detects a band of approximately 60 kDa (predicted molecular weight: 60 kDa).
IHC-P	★★★★★ (2)	1/100.
ICC/IF	★★★★★ (1)	Use a concentration of 5 - 10 µg/ml.
IP	★★★★☆ (1)	1/40.
Flow Cyt (Intra)		1/30. <b>ab171870</b> - Rabbit polyclonal IgG, is suitable for use as an isotype control with this antibody.

靶标

功能	Implicated in mitochondrial protein import and macromolecular assembly. May facilitate the correct folding of imported proteins. May also prevent misfolding and promote the refolding and proper assembly of unfolded polypeptides generated under stress conditions in the mitochondrial matrix.
疾病相关	Defects in HSPD1 are a cause of spastic paraplegia autosomal dominant type 13 (SPG13) [MIM:605280]. Spastic paraplegia is a degenerative spinal cord disorder characterized by a slow, gradual, progressive weakness and spasticity of the lower limbs. Defects in HSPD1 are the cause of leukodystrophy hypomyelinating type 4 (HLD4) [MIM:612233]; also called mitochondrial HSP60 chaperonopathy or MitCHAP-60 disease. HLD4 is a severe autosomal recessive hypomyelinating leukodystrophy. Clinically characterized by infantile-onset rotary nystagmus, progressive spastic paraplegia, neurologic regression, motor impairment, profound mental retardation. Death usually occurs within the first two decades of life.
序列相似性	Belongs to the chaperonin (HSP60) family.
细胞定位	Mitochondrion matrix.

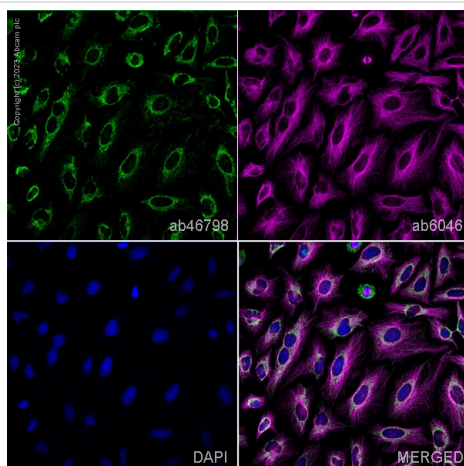
图片



Immunocytochemistry - Anti-Hsp60 antibody  
(ab46798)

This image is courtesy of an Abreview submitted by  
Suleyman Bozkurt

Immunocytochemistry analysis of paraformaldehyde-fixed 0.3% Triton X permeabilized HeLa FlpIn Cell line staining with ab46798 at 1/200 dilution. Secondary antibody was Alexa fluor™ 488 goat anti-rabbit IgG H+L at 1/700 dilution. Samples were incubated with the primary antibody with blocking buffer (5% FBS in PBS) for 2 hours at 24°C. Blocking was done using 5% serum for 1 hour at 24°C.

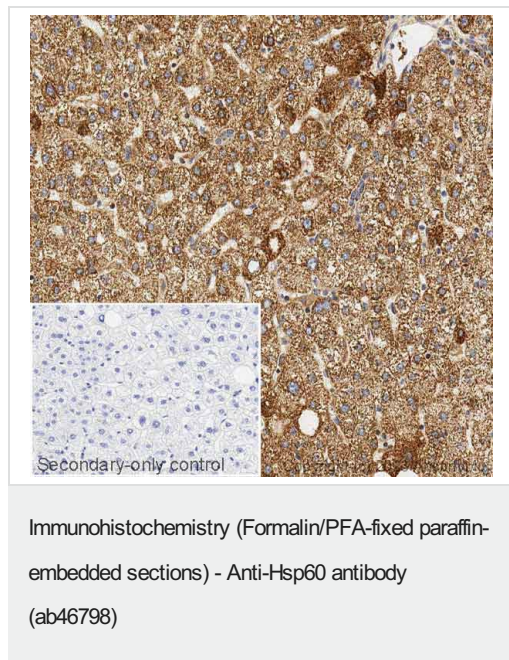


Immunocytochemistry/ Immunofluorescence - Anti-Hsp60 antibody (ab46798)

ab46798 staining Hsp60 in HeLa cells. The cells were fixed with 100% methanol (5 min), permeabilized with 0.1% PBS-Triton X-100 for 5 minutes and then blocked with 1% BSA/10% normal goat serum/0.3M glycine in 0.1%PBS-Tween for 1h. The cells were then incubated overnight at 4°C with ab46798 at 1µg/ml and **ab7291**, Mouse monoclonal [DM1A] to alpha Tubulin - Loading Control. Cells were then incubated with **ab150081**, Goat polyclonal Secondary Antibody to Rabbit IgG - H&L (Alexa Fluor® 488), pre-adsorbed at 1/1000 dilution (shown in green) and **ab150120**, Goat polyclonal Secondary Antibody to Mouse IgG - H&L (Alexa Fluor® 594), pre-adsorbed at 1/1000 dilution (shown in pseudocolour magenta). Nuclear DNA was labelled with DAPI (shown in blue).

Also suitable in cells fixed with 4% paraformaldehyde (10 min).

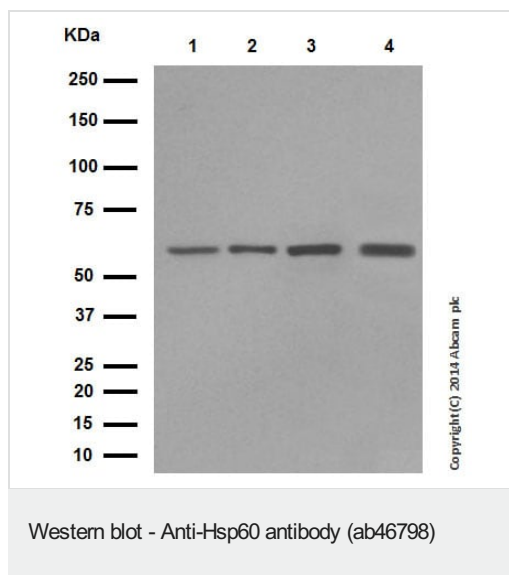
Image was acquired with a high-content analyser (Operetta CLS, Perkin Elmer) and a maximum intensity projection of confocal sections is shown.



IHC image of Hsp60 staining in a section of formalin-fixed paraffin-embedded normal human liver\* performed on a Leica Biosystems BOND® RX instrument. The section was pre-treated using heat mediated antigen retrieval with sodium citrate buffer (pH6, epitope retrieval solution 1) for 20mins. The section was then incubated with ab46798, 1ug/ml, for 15 mins at room temperature and detected using an HRP conjugated compact polymer system. DAB was used as the chromogen. The section was then counterstained with haematoxylin and mounted with DPX. The inset secondary-only control image is taken from an identical assay without primary antibody.

For other IHC staining systems (automated and non-automated) customers should optimize variable parameters such as antigen retrieval conditions, primary antibody concentration and antibody incubation times.

*\*Tissue obtained from the Human Research Tissue Bank, supported by the NIHR Cambridge Biomedical Research Centre*



**All lanes :** Anti-Hsp60 antibody (ab46798) at 1/20000 dilution (purified)

**Lane 1 :** Mouse brain tissue lysate at 20 µg

**Lane 2 :** Mouse heart tissue lysate at 20 µg

**Lane 3 :** Mouse spleen tissue lysate at 20 µg

**Lane 4 :** Rat heart tissue lysate at 10 µg

#### Secondary

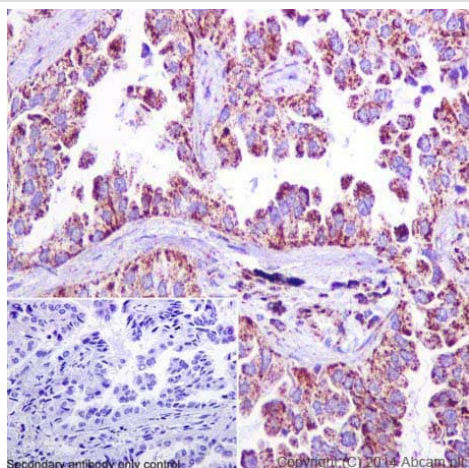
**All lanes :** HRP conjugated goat anti-rabbit IgG (H+L) at 1/1000 dilution

**Predicted band size:** 60 kDa

**Observed band size:** 60 kDa

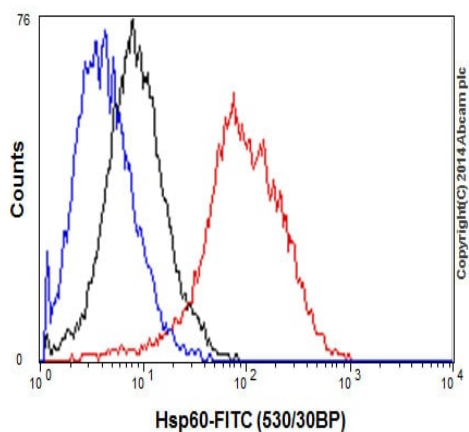
Blocking Buffer: 5% NFDM/TBST

Dilution Buffer: 5% NFDM/TBST



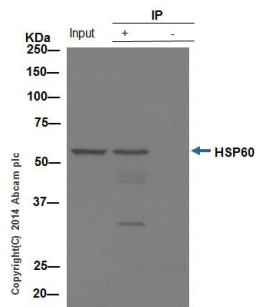
Immunohistochemistry (Formalin/PFA-fixed paraffin-embedded sections) - Anti-Hsp60 antibody (ab46798)

Immunohistochemical staining of paraffin embedded human lung adenocarcinoma with purified ab46798 at a working dilution of 1 in 100. The secondary antibody used is **ab97051** Goat Anti-Rabbit IgG H&L (HRP) at a dilution of 1/500. The sample is counter-stained with hematoxylin. Antigen retrieval was performed using Tris-EDTA buffer, pH 9.0. PBS was used instead of the primary antibody as the negative control, and is shown in the inset.



Flow Cytometry (Intracellular) - Anti-Hsp60 antibody (ab46798)

Overlay histogram showing HeLa cells fixed in 2% PFA and stained with purified ab46798 at a dilution of 1 in 150 (red line). The secondary antibody used was FITC goat anti-rabbit at a dilution of 1 in 150. Rabbit monoclonal IgG was used as an isotype control (black) and cells without incubation with the antibody were used as a negative control (blue line).

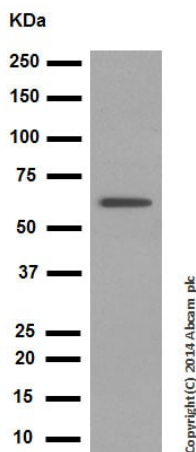


Immunoprecipitation - Anti-Hsp60 antibody  
(ab46798)

ab46798 (purified) at 1/40 immunoprecipitating Hsp60 in MCF7 (Lane 1). Lane 2 - PBS. For western blotting, a HRP-conjugated anti-rabbit IgG, specific to the non-reduced form of IgG was used as the secondary antibody (1/1500).

Blocking buffer and concentration: 5% NFDM/TBST.

Diluting buffer and concentration: 5% NFDM /TBST.



Western blot - Anti-Hsp60 antibody (ab46798)

Anti-Hsp60 antibody (ab46798) at 1/20000 dilution (purified) + T47-D cell lysate at 10 µg

#### Secondary

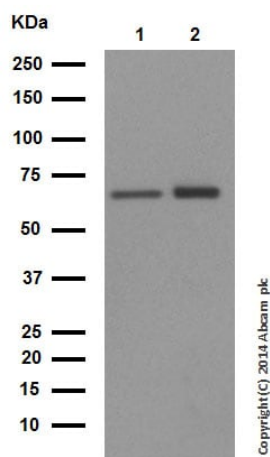
HRP conjugated goat anti-rabbit IgG (H+L) at 1/1000 dilution

**Predicted band size:** 60 kDa

**Observed band size:** 60 kDa

Blocking Buffer: 5% NFDM/TBST

Dilution Buffer: 5% NFDM/TBST



Western blot - Anti-Hsp60 antibody (ab46798)

**All lanes :** Anti-Hsp60 antibody (ab46798) at 1/50000 dilution (purified)

**Lane 1 :** MCF7 cell lysate

**Lane 2 :** SW480 cell lysate

Lysates/proteins at 20 µg per lane.

#### Secondary

**All lanes :** HRP conjugated goat anti-rabbit IgG (H+L) at 1/1000 dilution

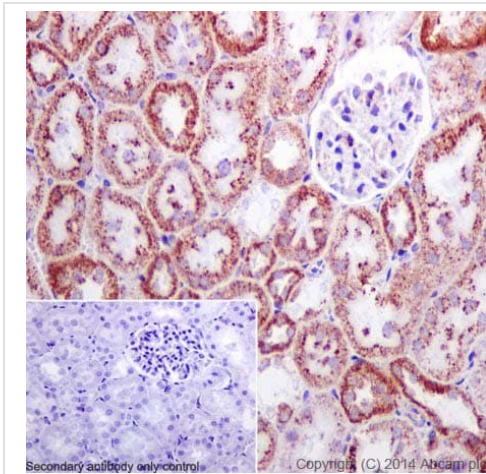
**Predicted band size:** 60 kDa

**Observed band size:** 60 kDa



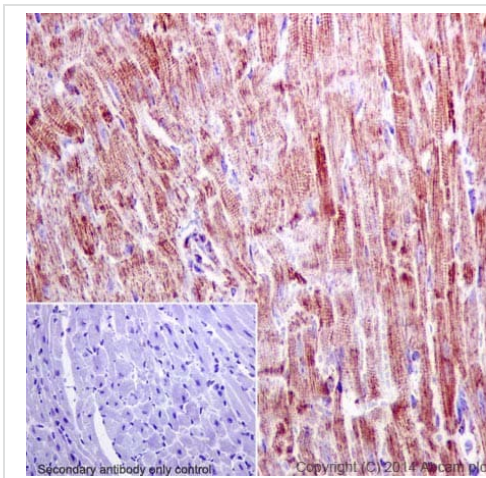
Blocking Buffer: 5% NFDM/TBST

Dilution Buffer: 5% NFDM/TBST



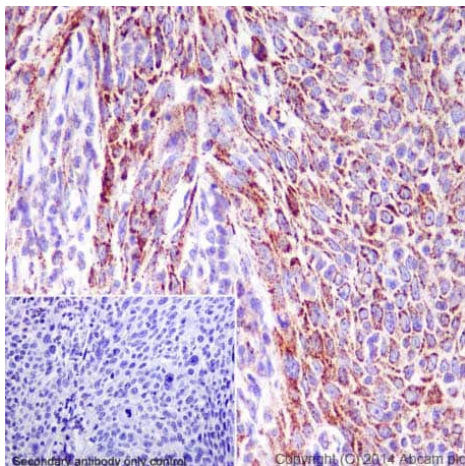
Immunohistochemistry (Formalin/PFA-fixed paraffin-embedded sections) - Anti-Hsp60 antibody (ab46798)

Immunohistochemical staining of paraffin embedded rat kidney with purified ab46798 at a working dilution of 1 in 100. The secondary antibody used is [ab97051](#) Goat Anti-Rabbit IgG H&L (HRP) at a dilution of 1/500. The sample is counter-stained with hematoxylin. Antigen retrieval was performed using Tris-EDTA buffer, pH 9.0. PBS was used instead of the primary antibody as the negative control, and is shown in the inset.



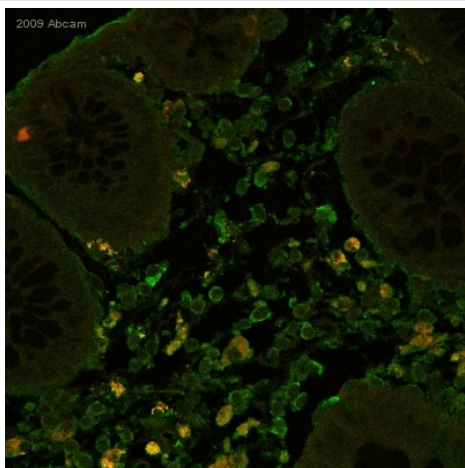
Immunohistochemistry (Formalin/PFA-fixed paraffin-embedded sections) - Anti-Hsp60 antibody (ab46798)

Immunohistochemical staining of paraffin embedded mouse cardiac muscle with purified ab46798 at a working dilution of 1 in 100. The secondary antibody used is [ab97051](#) Goat Anti-Rabbit IgG H&L (HRP) at a dilution of 1/500. The sample is counter-stained with hematoxylin. Antigen retrieval was performed using Tris-EDTA buffer, pH 9.0. PBS was used instead of the primary antibody as the negative control, and is shown in the inset.



Immunohistochemistry (Formalin/PFA-fixed paraffin-embedded sections) - Anti-Hsp60 antibody (ab46798)

Immunohistochemical staining of paraffin embedded human cervical carcinoma with purified ab46798 at a working dilution of 1 in 100. The secondary antibody used is **ab97051** Goat Anti-Rabbit IgG H&L (HRP) at a dilution of 1/500. The sample is counter-stained with hematoxylin. Antigen retrieval was performed using Tris-EDTA buffer, pH 9.0. PBS was used instead of the primary antibody as the negative control, and is shown in the inset.

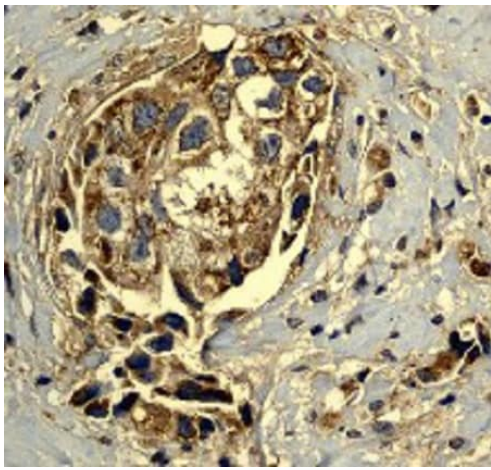


Immunohistochemistry (Formalin/PFA-fixed paraffin-embedded sections) - Anti-Hsp60 antibody (ab46798)

Unpurified ab46798 staining Hsp60 from human colon tissue by immunohistochemistry (formalin/PFA-fixed paraffin-embedded sections). Cells were formaldehyde fixed prior to blocking in 10% serum for 2 hours at 21°C. The primary antibody was diluted 1/500 and incubated with the sample for 2 hours at 21°C. Alexa fluor® 594 goat polyclonal, diluted 1/5000, was used as the secondary.

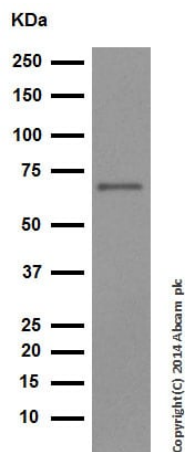
This image is courtesy of an Abreview submitted by Nicole Schechter Reproduced under the Creative Commons license <http://creativecommons.org/licenses/by/4.0/>





Immunohistochemistry (Formalin/PFA-fixed paraffin-embedded sections) - Anti-Hsp60 antibody (ab46798)

Immunohistochemical analysis of paraffin-embedded human breast adenocarcinoma using unpurified ab46798 at 1/250 dilution.



Western blot - Anti-Hsp60 antibody (ab46798)

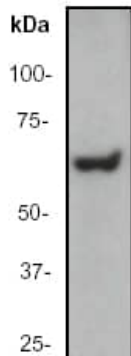
Anti-Hsp60 antibody (ab46798) at 1/50000 dilution (purified) + Pig heart tissue lysate at 20 µg

#### Secondary

HRP conjugated goat anti-rabbit IgG (H+L) at 1/1000 dilution

**Predicted band size:** 60 kDa

**Observed band size:** 60 kDa



Western blot - Anti-Hsp60 antibody (ab46798)

Anti-Hsp60 antibody (ab46798) at 1/50000 dilution (unpurified) + T-47D whole cell lysate ([ab14899](#)) at 10 µg

#### Secondary

Goat Anti-Rabbit IgG H&L (HRP) ([ab6721](#)) at 1/2000 dilution (Goat anti -rabbit HRP)

**Predicted band size:** 60 kDa

**Observed band size:** 60 kDa

## Secondary antibody - **anti-rabbit HRP (ab6721)**

**Please note:** All products are "FOR RESEARCH USE ONLY. NOT FOR USE IN DIAGNOSTIC PROCEDURES"

### **Our Abpromise to you: Quality guaranteed and expert technical support**

---

- Replacement or refund for products not performing as stated on the datasheet
- Valid for 12 months from date of delivery
- Response to your inquiry within 24 hours
- We provide support in Chinese, English, French, German, Japanese and Spanish
- Extensive multi-media technical resources to help you
- We investigate all quality concerns to ensure our products perform to the highest standards

If the product does not perform as described on this datasheet, we will offer a refund or replacement. For full details of the Abpromise, please visit <https://www.abcam.cn/abpromise> or contact our technical team.

### **Terms and conditions**

---

- Guarantee only valid for products bought direct from Abcam or one of our authorized distributors