


Anti-Hsp27 antibody ab12351

★★★★★ [3 Abreviews](#) [15 References](#) [4 图像](#)

概述

产品名称	Anti-Hsp27抗体
描述	兔多克隆抗体to Hsp27
宿主	Rabbit
特异性	This antibody detects an 25 kDa protein, corresponding to the apparent molecular mass of Heat Shock Protein 27 (Hsp27) on SDS-PAGE immunoblots. This antibody has been shown to react with both the phosphorylated and the non-phosphorylated forms of Hsp27. Note: It has been reported that certain murine cell lines do not express Hsp27 under certain conditions. This antibody also recognizes a mitochondrial small Hsp (35 kDa) in rat PC12 cells. This mitochondrial small Hsp is proposed to protect mitochondrial complex I from oxidative stress.
经测试应用	适用于: IHC, WB
种属反应性	与反应: Mouse, Rat, Human 预测可用于: Pig, Monkey 
免疫原	Recombinant full length protein corresponding to Human Hsp27. Database link: P04792
常规说明	For maximum product recovery, after thawing, centrifuge the product vial before removing cap. The Life Science industry has been in the grips of a reproducibility crisis for a number of years. Abcam is leading the way in addressing this with our range of recombinant monoclonal antibodies and knockout edited cell lines for gold-standard validation. Please check that this product meets your needs before purchasing. If you have any questions, special requirements or concerns, please send us an inquiry and/or contact our Support team ahead of purchase. Recommended alternatives for this product can be found below, along with publications, customer reviews and Q&As

性能

形式	Liquid
存放说明	Shipped at 4°C. Upon delivery aliquot and store at -20°C. Avoid freeze / thaw cycles.
存储溶液	Preservative: 0.09% Sodium azide Constituents: PBS, 50% Glycerol (glycerin, glycerine)
纯度	Protein A purified
克隆	多克隆

同种型

IgG

应用

The Abpromise guarantee

Abpromise™承诺保证使用ab12351于以下的经测试应用

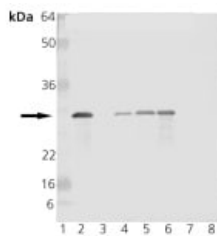
“应用说明”部分 下显示的仅为推荐的起始稀释度;实际最佳的稀释度/浓度应由使用者检定。

应用	Ab评论	说明
IHC		Use a concentration of 10 µg/ml.
WB	★★★★★ (2)	1/1 - 1/1000. Predicted molecular weight: 25 kDa.

靶标

功能	Involved in stress resistance and actin organization.
组织特异性	Detected in all tissues tested: skeletal muscle, heart, aorta, large intestine, small intestine, stomach, esophagus, bladder, adrenal gland, thyroid, pancreas, testis, adipose tissue, kidney, liver, spleen, cerebral cortex, blood serum and cerebrospinal fluid. Highest levels are found in the heart and in tissues composed of striated and smooth muscle.
疾病相关	<p>Defects in HSPB1 are the cause of Charcot-Marie-Tooth disease type 2F (CMT2F) [MIM:606595]. CMT2F is a form of Charcot-Marie-Tooth disease, the most common inherited disorder of the peripheral nervous system. Charcot-Marie-Tooth disease is classified in two main groups on the basis of electrophysiologic properties and histopathology: primary peripheral demyelinating neuropathy or CMT1, and primary peripheral axonal neuropathy or CMT2. Neuropathies of the CMT2 group are characterized by signs of axonal regeneration in the absence of obvious myelin alterations, normal or slightly reduced nerve conduction velocities, and progressive distal muscle weakness and atrophy. Nerve conduction velocities are normal or slightly reduced. CMT2F onset is between 15 and 25 years with muscle weakness and atrophy usually beginning in feet and legs (peroneal distribution). Upper limb involvement occurs later. CMT2F inheritance is autosomal dominant.</p> <p>Defects in HSPB1 are a cause of distal hereditary motor neuronopathy type 2B (HMN2B) [MIM:608634]. Distal hereditary motor neuronopathies constitute a heterogeneous group of neuromuscular disorders caused by selective impairment of motor neurons in the anterior horn of the spinal cord, without sensory deficit in the posterior horn. The overall clinical picture consists of a classical distal muscular atrophy syndrome in the legs without clinical sensory loss. The disease starts with weakness and wasting of distal muscles of the anterior tibial and peroneal compartments of the legs. Later on, weakness and atrophy may expand to the proximal muscles of the lower limbs and/or to the distal upper limbs.</p>
序列相似性	Belongs to the small heat shock protein (HSP20) family.
翻译后修饰	Phosphorylated in MCF-7 cells on exposure to protein kinase C activators and heat shock.
细胞定位	Cytoplasm. Nucleus. Cytoplasm > cytoskeleton > spindle. Cytoplasmic in interphase cells. Colocalizes with mitotic spindles in mitotic cells. Translocates to the nucleus during heat shock and resides in sub-nuclear structures known as SC35 speckles or nuclear splicing speckles.

图片



Western blot - Anti-Hsp27 antibody (ab12351)

All lanes : Anti-Hsp27 antibody (ab12351) at 1 µg/ml

Lane 1 : MW Marker

Lane 2 : HSP27 Recombinant Human Protein

Lane 3 : HSP25 Recombinant Murine Protein (Negative Control)

Lane 4 : HeLa cell lysate

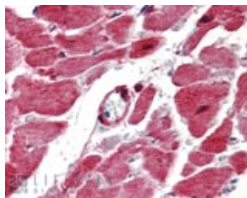
Lane 5 : HeLa cell lysate, Heat Shocked

Lane 6 : Vero, Heat Shocked

Lane 7 : 3T3 cell lysate, heat shocked

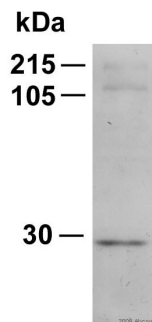
Lane 8 : PC-12 cell lysate, Heat Shocked

Predicted band size: 25 kDa



Immunohistochemistry - Anti-Hsp27 antibody (ab12351)

Immunohistochemical analysis of human heart tissue sections with ab12351 at 10 µg/mL.



Western blot - Anti-Hsp27 antibody (ab12351)

This image is courtesy of an anonymous Abreview

Anti-Hsp27 antibody (ab12351) at 1/500 dilution + Rat keratinocytes, whole cell lysate at 10 µg

Secondary

HRP conjugated goat anti-rabbit antibody

Developed using the ECL technique.

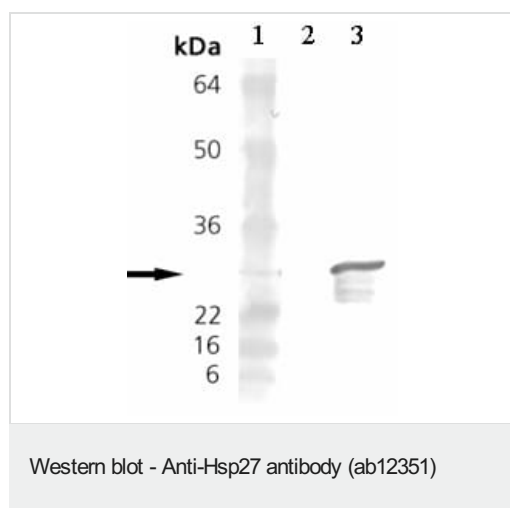
Performed under reducing conditions.

Predicted band size: 25 kDa

Observed band size: 25 kDa

Additional bands at: 120 kDa (possible non-specific binding), 215 kDa (possible non-specific binding)

Exposure time: 5 minutes



All lanes : Anti-Hsp27 antibody (ab12351) at 1/1000 dilution

Lane 1 : Molecular weight marker

Lane 2 : Cell lysates prepared from untreated PC-12 cells

Lane 3 : Cell lysates prepared from heat shock treated PC-12 cells

Predicted band size: 25 kDa

Please note: All products are "FOR RESEARCH USE ONLY. NOT FOR USE IN DIAGNOSTIC PROCEDURES"

Our Abpromise to you: Quality guaranteed and expert technical support

- Replacement or refund for products not performing as stated on the datasheet
- Valid for 12 months from date of delivery
- Response to your inquiry within 24 hours
- We provide support in Chinese, English, French, German, Japanese and Spanish
- Extensive multi-media technical resources to help you
- We investigate all quality concerns to ensure our products perform to the highest standards

If the product does not perform as described on this datasheet, we will offer a refund or replacement. For full details of the Abpromise, please visit <https://www.abcam.cn/abpromise> or contact our technical team.

Terms and conditions

- Guarantee only valid for products bought direct from Abcam or one of our authorized distributors