


HRP Anti-Topoisomerase I antibody [EPR5375] ab196642

重组 RabMAb

2 图像

概述

产品名称	HRP Anti-Topoisomerase I 抗体[EPR5375]
描述	HRP 兔单克隆抗体[EPR5375] to Topoisomerase I
宿主	Rabbit
偶联物	HRP
经测试应用	适用于: WB
种属反应性	与反应: Human 预测可用于: Mouse 
免疫原	Synthetic peptide. This information is proprietary to Abcam and/or its suppliers.
阳性对照	WB: Jurkat, MCF7, SW480 and K562 whole cell lysates.
常规说明	<p>This product is a recombinant monoclonal antibody, which offers several advantages including:</p> <ul style="list-style-type: none"> - High batch-to-batch consistency and reproducibility - Improved sensitivity and specificity - Long-term security of supply - Animal-free production <p>For more information see here.</p> <p>Our RabMAb[®] technology is a patented hybridoma-based technology for making rabbit monoclonal antibodies. For details on our patents, please refer to RabMAb[®] patents.</p>

性能

形式	Liquid
存放说明	Shipped at 4°C. Store at +4°C short term (1-2 weeks). Upon delivery aliquot. Store at -20°C. Avoid freeze / thaw cycle. Store In the Dark.
存储溶液	pH: 7.40 Preservative: 0.1% Proclin 300 Solution Constituents: 30% Glycerol (glycerin, glycerine), 1% BSA, PBS
纯度	Protein A purified
克隆	单克隆
克隆编号	EPR5375

同种型IgG

应用

The Abpromise guarantee **Abpromise™**承诺保证使用ab196642于以下的经测试应用

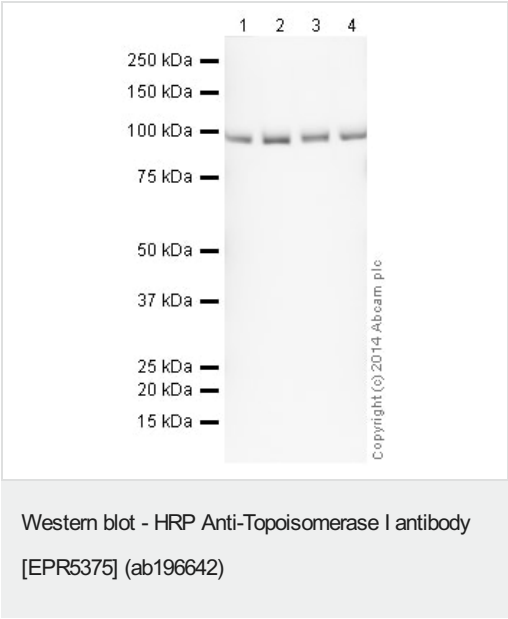
“应用说明”部分 下显示的仅为推荐的起始稀释度;实际最佳的稀释度/浓度应由使用者检定。

应用	Ab评论	说明
WB		1/5000. Detects a band of approximately 91 kDa (predicted molecular weight: 91 kDa).

靶标

功能	The reaction catalyzed by topoisomerases leads to the conversion of one topological isomer of DNA to another.
疾病相关	Note=A chromosomal aberration involving TOP1 is found in a form of therapy-related myelodysplastic syndrome. Translocation t(11;20)(p15;q11) with NUP98.
序列相似性	Belongs to the eukaryotic type I topoisomerase family.
翻译后修饰	Sumoylated. Lys-117 is the main site of sumoylation. Sumoylation plays a role in partitioning TOP1 between nucleoli and nucleoplasm. Levels are dramatically increased on camptothecin (CPT) treatment.
细胞定位	Nucleus > nucleolus. Nucleus > nucleoplasm. Diffuse nuclear localization with some enrichment in nucleoli. On CPT treatment, cleared from nucleoli into nucleoplasm. Sumolyated forms found in both nucleoplasm and nucleoli.

图片



All lanes : HRP Anti-Topoisomerase I antibody [EPR5375] (ab196642) at 1/5000 dilution

Lane 1 : Jurkat (Human T cell lymphoblast-like cell line) Whole Cell Lysate

Lane 2 : MCF7 (Human breast adenocarcinoma cell line) Whole Cell Lysate

Lane 3 : SW480 (Human colon adenocarcinoma cell line) Whole Cell Lysate

Lane 4 : K562 (Human erythromyeloblastoid leukemia cell line) Whole Cell Lysate

Lysates/proteins at 10 µg per lane.

Developed using the ECL technique.

Performed under reducing conditions.

Predicted band size: 91 kDa

Observed band size: 91 kDa

Exposure time: 3 minutes

This blot was produced using a 4-12% Bis-tris gel under the MOPS buffer system. The gel was run at 200V for 50 minutes before being transferred onto a Nitrocellulose membrane at 30V for 70 minutes. The membrane was then blocked for an hour using 3% milk before being incubated with ab196642 overnight at 4°C. Antibody binding was visualised using ECL development solution **ab133406**.

Why choose a recombinant antibody?



- Research with confidence**
Consistent and reproducible results
- Long-term and scalable supply**
Recombinant technology
- Success from the first experiment**
Confirmed specificity
- Ethical standards compliant**
Animal-free production

HRP Anti-Topoisomerase I antibody [EPR5375]
(ab196642)

Please note: All products are "FOR RESEARCH USE ONLY. NOT FOR USE IN DIAGNOSTIC PROCEDURES"

Our Abpromise to you: Quality guaranteed and expert technical support

- Replacement or refund for products not performing as stated on the datasheet
- Valid for 12 months from date of delivery
- Response to your inquiry within 24 hours
- We provide support in Chinese, English, French, German, Japanese and Spanish
- Extensive multi-media technical resources to help you
- We investigate all quality concerns to ensure our products perform to the highest standards

If the product does not perform as described on this datasheet, we will offer a refund or replacement. For full details of the Abpromise, please visit <https://www.abcam.cn/abpromise> or contact our technical team.

Terms and conditions

- Guarantee only valid for products bought direct from Abcam or one of our authorized distributors