

HRP Anti-Synaptophysin antibody [YE269] ab195520

重组 RabMAb

3 图像

概述

产品名称	HRP Anti-Synaptophysin抗体[YE269]
描述	HRP兔单克隆抗体[YE269] to Synaptophysin
宿主	Rabbit
偶联物	HRP
经测试应用	适用于: WB, IHC-P
种属反应性	与反应: Mouse, Rat, Human
免疫原	Synthetic peptide. This information is proprietary to Abcam and/or its suppliers. (Peptide available as <a href="#">ab189853</a> )
阳性对照	WB: PC12 cell lysate, mouse brain and rat brain lysates. IHC-P: normal human pancreas tissue.
常规说明	Our RabMAb <sup>®</sup> technology is a patented hybridoma-based technology for making rabbit monoclonal antibodies. For details on our patents, please refer to <a href="#">RabMAb<sup>®</sup> patents</a> .

性能

形式	Liquid
存放说明	Shipped at 4°C. Store at +4°C short term (1-2 weeks). Upon delivery aliquot. Store at -20°C. Avoid freeze / thaw cycle. Store In the Dark.
存储溶液	pH: 7.40 Preservative: 0.1% Proclin 300 Solution Constituents: 30% Glycerol (glycerin, glycerine), 1% BSA, PBS
纯度	Protein A purified
克隆	单克隆
克隆编号	YE269
同种型	IgG

应用

The Abpromise guarantee [Abpromise<sup>™</sup>](#) 承诺保证使用ab195520于以下的经测试应用

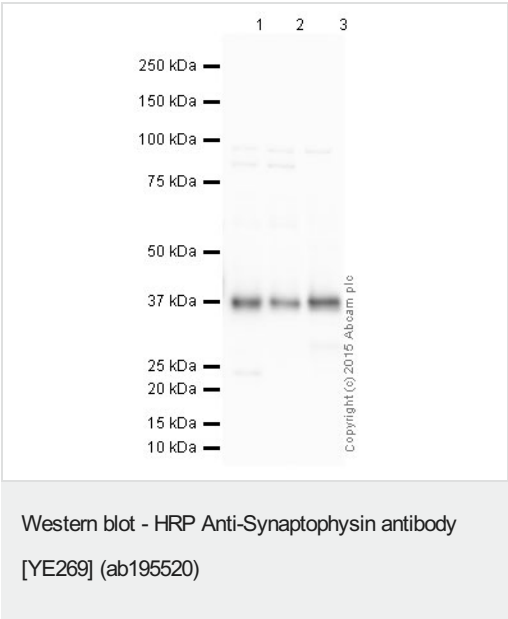
“应用说明”部分 下显示的仅为推荐的起始稀释度;实际最佳的稀释度/浓度应由使用者检定。

应用	Ab评论	说明
WB		1/10000. Detects a band of approximately 37 kDa (predicted molecular weight: 34 kDa).Can be blocked with <b>Synaptophysin peptide (ab189853)</b> .
IHC-P		1/500. Perform heat mediated antigen retrieval with citrate buffer pH 6 before commencing with IHC staining protocol.

靶标

功能	Possibly involved in structural functions as organizing other membrane components or in targeting the vesicles to the plasma membrane. Involved in the regulation of short-term and long-term synaptic plasticity.
组织特异性	Characteristic of a type of small (30-80 nm) neurosecretory vesicles, including presynaptic vesicles, but also vesicles of various neuroendocrine cells of both neuronal and epithelial phenotype.
疾病相关	Mental retardation, X-linked, SYP-related
序列相似性	Belongs to the synaptophysin/synaptobrevin family. Contains 1 MARVEL domain.
结构域	The calcium-binding activity is thought to be localized in the cytoplasmic tail of the protein.
翻译后修饰	Ubiquitinated; mediated by SIAH1 or SIAH2 and leading to its subsequent proteasomal degradation.
细胞定位	Cytoplasmic vesicle, secretory vesicle, synaptic vesicle membrane. Cell junction, synapse, synaptosome.

图片



**All lanes :** HRP Anti-Synaptophysin antibody [YE269] (ab195520) at 1/1000 dilution

**Lane 1 :** PC12 (Rat adrenal pheochromocytoma cell line) Whole Cell Lysate

**Lane 2 :** Brain (Rat) Tissue Lysate

**Lane 3 :** Brain (Mouse) Tissue Lysate

Lysates/proteins at 10 µg per lane.

Developed using the ECL technique.

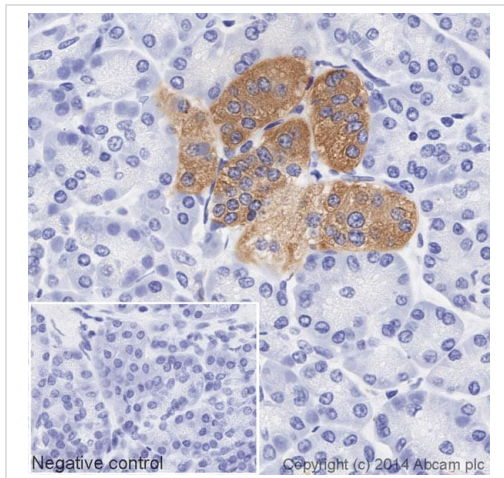
Performed under reducing conditions.

**Predicted band size:** 34 kDa

**Observed band size:** 37 kDa

**Exposure time:** 2 seconds

This blot was produced using a 4-12% Bis-tris gel under the MOPS buffer system. The gel was run at 200V for 50 minutes before being transferred onto a Nitrocellulose membrane at 30V for 70 minutes. The membrane was then blocked for an hour using 3% milk before being incubated with ab195520 overnight at 4°C. Antibody binding was visualised using ECL development solution **ab133406**.



Immunohistochemistry (Formalin/PFA-fixed paraffin-embedded sections) - HRP Anti-Synaptophysin antibody [YE269] (ab195520)

IHC image of Synaptophysin staining in a section of formalin-fixed paraffin-embedded normal human pancreas tissue\*, performed on a Leica BOND. The section was pre-treated using heat mediated antigen retrieval with sodium citrate buffer (pH6, epitope retrieval solution 1) for 20mins. The section was then incubated with ab195520 at 1/500 dilution, for 15 mins at room temperature. DAB was used as the chromogen. The section was then counterstained with haematoxylin and mounted with DPX. The inset negative control image is taken from an identical assay without primary antibody.

For other IHC staining systems (automated and non-automated) customers should optimize variable parameters such as antigen retrieval conditions, primary antibody concentration and antibody incubation times.

\*Tissue obtained from the Human Research Tissue Bank, supported by the NIHR Cambridge Biomedical Research Centre.

### Why choose a recombinant antibody?



**Research with confidence**  
Consistent and reproducible results



**Long-term and scalable supply**  
Recombinant technology



**Success from the first experiment**  
Confirmed specificity



**Ethical standards compliant**  
Animal-free production

HRP Anti-Synaptophysin antibody [YE269]  
(ab195520)

**Please note:** All products are "FOR RESEARCH USE ONLY. NOT FOR USE IN DIAGNOSTIC PROCEDURES"

### Our Abpromise to you: Quality guaranteed and expert technical support

---

- Replacement or refund for products not performing as stated on the datasheet
- Valid for 12 months from date of delivery
- Response to your inquiry within 24 hours
- We provide support in Chinese, English, French, German, Japanese and Spanish
- Extensive multi-media technical resources to help you
- We investigate all quality concerns to ensure our products perform to the highest standards

If the product does not perform as described on this datasheet, we will offer a refund or replacement. For full details of the Abpromise, please visit <https://www.abcam.cn/abpromise> or contact our technical team.

### Terms and conditions

---

- Guarantee only valid for products bought direct from Abcam or one of our authorized distributors