

### HRP Anti-RFP antibody ab34767

★★★★★ [3 Abreviews](#) [8 References](#) [1 图像](#)

#### 概述

产品名称	HRP Anti-RFP抗体
描述	HRP兔多克隆抗体to RFP
宿主	Rabbit
偶联物	HRP
特异性	ab34767 is designed to detect RFP and its variants.
经测试应用	<b>适用于:</b> WB
种属反应性	<b>与反应:</b> Species independent
免疫原	Fusion protein The immunogen is a Red Fluorescent Protein (RFP) fusion protein corresponding to the full length amino acid sequence (234aa) derived from the mushroom polyp coral Discosoma.
常规说明	<p>The Life Science industry has been in the grips of a reproducibility crisis for a number of years. Abcam is leading the way in addressing this with our range of recombinant monoclonal antibodies and knockout edited cell lines for gold-standard validation. Please check that this product meets your needs before purchasing.</p> <p>If you have any questions, special requirements or concerns, please send us an inquiry and/or contact our Support team ahead of purchase. Recommended alternatives for this product can be found below, along with publications, customer reviews and Q&amp;As</p>

#### 性能

形式	Liquid
存放说明	Shipped at 4°C. Store at +4°C.
存储溶液	<p>pH: 6.50</p> <p>Preservative: 0.01% Gentamicin sulphate</p> <p>Constituents: 1% BSA, 0.42% Tripotassium orthophosphate, 0.87% Sodium chloride</p>
纯度	Immunogen affinity purified
纯化说明	immunoaffinity chromatography was followed by solid phase adsorption to remove any unwanted reactivities.
克隆	多克隆
同种型	IgG

## 应用

### The Abpromise guarantee

**Abpromise™** 承诺保证使用 ab34767 于以下的经测试应用

“应用说明”部分 下显示的仅为推荐的起始稀释度;实际最佳的稀释度/浓度应由使用者检定。

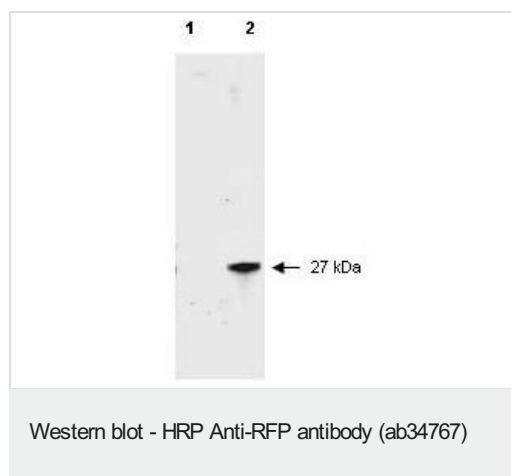
应用	Ab 评论	说明
WB	★★★★★ (2)	1/1000 - 1/5000. Detects a band of approximately 27 kDa.

## 靶标

### 相关性

Fluorescent proteins have become a useful and ubiquitous tool for making chimeric proteins, where they function as a fluorescent protein tag. Typically they tolerate N- and C-terminal fusion to a broad variety of proteins. They have been expressed in most known cell types and are used as a noninvasive fluorescent marker in living cells and organisms. They enable a wide range of applications where they have functioned as a cell lineage tracer, reporter of gene expression, or as a measure of protein-protein interactions.

## 图片



**All lanes :** HRP Anti-RFP antibody (ab34767) at 1/2500 dilution

**Lane 1 :** HeLa cell extract

**Lane 2 :** HeLa lysate

Lysates/proteins at 10 µg per lane.

### Secondary

**All lanes :** Goat-a-Rabbit IgG [H&L] at 1/5000 dilution

**Please note:** All products are "FOR RESEARCH USE ONLY. NOT FOR USE IN DIAGNOSTIC PROCEDURES"

## Our Abpromise to you: Quality guaranteed and expert technical support

- Replacement or refund for products not performing as stated on the datasheet
- Valid for 12 months from date of delivery
- Response to your inquiry within 24 hours
- We provide support in Chinese, English, French, German, Japanese and Spanish
- Extensive multi-media technical resources to help you
- We investigate all quality concerns to ensure our products perform to the highest standards

If the product does not perform as described on this datasheet, we will offer a refund or replacement. For full details of the Abpromise, please visit <https://www.abcam.cn/abpromise> or contact our technical team.

#### **Terms and conditions**

---

- Guarantee only valid for products bought direct from Abcam or one of our authorized distributors