

HRP Anti-Phosphoserine antibody ab9334

[12 References](#) [1 图像](#)

概述

产品名称	HRP Anti-Phosphoserine抗体
描述	HRP兔多克隆抗体to Phosphoserine
宿主	Rabbit
偶联物	HRP
特异性	Specifically recognizes both free-phosphoserine, serine-phosphorylated peptide and proteins. Does not cross-react with ATP, phosphotyrosine, peptidyl phosphothreonine and serine. Has slight cross-reactivity with free phosphothreonine. Readily reacts to known phosphoproteins such as phosvitin and alpha casein.
经测试应用	适用于: WB, ELISA
种属反应性	与反应: Species independent
免疫原	Chemical/ Small Molecule corresponding to Phosphoserine conjugated to keyhole limpet haemocyanin. BSA and KLH-phosphoserine conjugates.
阳性对照	Use Mouse brain extract for Western Blotting or synthetic phosphopeptide or phosvitin for ELISA.
常规说明	<p>The Life Science industry has been in the grips of a reproducibility crisis for a number of years. Abcam is leading the way in addressing this with our range of recombinant monoclonal antibodies and knockout edited cell lines for gold-standard validation. Please check that this product meets your needs before purchasing.</p> <p>If you have any questions, special requirements or concerns, please send us an inquiry and/or contact our Support team ahead of purchase. Recommended alternatives for this product can be found below, along with publications, customer reviews and Q&As</p>

性能

形式	Liquid
存放说明	Shipped at 4°C. Store at +4°C.
存储溶液	pH: 6.00 Constituent: Tris buffered saline
纯度	Immunogen affinity purified
纯化说明	Immunoaffinity chromatography with phosphoserine-agarose.
克隆	多克隆

应用

The Abpromise guarantee **Abpromise™**承诺保证使用ab9334于以下的经测试应用

“应用说明”部分 下显示的仅为推荐的起始稀释度;实际最佳的稀释度/浓度应由使用者检定。

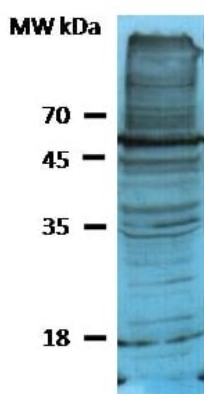
应用	Ab评论	说明
WB		Use a concentration of 2 µg/ml. To block use 3%BSA with 0.1% gelatin (do not use milk). We recommend that the antibody solution should contain 0.5% BSA to prevent non-specific binding.
ELISA		Use a concentration of 1 µg/ml.

靶标

相关性

Changes in the serine/threonine phosphorylation state of a protein in response to various external stimuli can have profound effects on cellular signal transduction, apoptosis and carcinogenesis. The reagents, including phosphorylated protein/peptides, antibodies against the phosphospecific amino acid, are important tools to explore the activation of serine, threonine or tyrosine containing proteins. An aberrant protein phosphorylation is a hallmark of human disease, and the enzymes, particularly protein kinases, which control protein phosphorylation are recognized as a major new drug target family.

图片



Western blotting of mouse brain extract with ab9334 at a 1/200 dilution on a 12% SDS gel. 50 µg protein loaded in each lane. Antibody incubated for 2 hours incubation at room temperature.

Western blot - HRP Anti-Phosphoserine antibody (ab9334)

Please note: All products are "FOR RESEARCH USE ONLY. NOT FOR USE IN DIAGNOSTIC PROCEDURES"

Our Abpromise to you: Quality guaranteed and expert technical support

- Replacement or refund for products not performing as stated on the datasheet
- Valid for 12 months from date of delivery
- Response to your inquiry within 24 hours

- We provide support in Chinese, English, French, German, Japanese and Spanish
- Extensive multi-media technical resources to help you
- We investigate all quality concerns to ensure our products perform to the highest standards

If the product does not perform as described on this datasheet, we will offer a refund or replacement. For full details of the Abpromise, please visit <https://www.abcam.cn/abpromise> or contact our technical team.

Terms and conditions

- Guarantee only valid for products bought direct from Abcam or one of our authorized distributors