

HRP Anti-Myoglobin antibody [EP3081Y] ab199243

重组 RabMAb

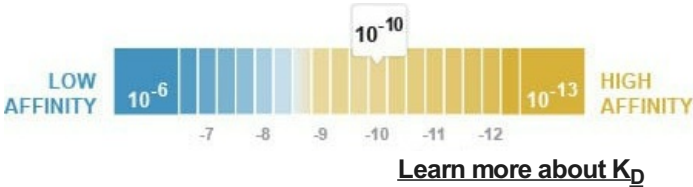
2 图像

概述

产品名称	HRP Anti-Myoglobin抗体[EP3081Y]
描述	HRP兔单克隆抗体[EP3081Y] to Myoglobin
宿主	Rabbit
偶联物	HRP
经测试应用	适用于: WB
种属反应性	与反应: Mouse, Rat, Human
免疫原	Synthetic peptide. This information is proprietary to Abcam and/or its suppliers.
阳性对照	WB: Human, rat and mouse heart muscle tissue lysates.
常规说明	Our RabMAb® technology is a patented hybridoma-based technology for making rabbit monoclonal antibodies. For details on our patents, please refer to <a href="#">RabMAb® patents</a> .

性能

形式	Liquid
存放说明	Shipped at 4°C. Store at +4°C short term (1-2 weeks). Upon delivery aliquot. Store at -20°C. Avoid freeze / thaw cycle. Store In the Dark.
解离常数 (K <sub>D</sub> )	K <sub>D</sub> = 1.78 x 10 <sup>-10</sup> M



存储溶液	pH: 7.40 Preservative: 0.1% Proclin 300 Solution Constituents: PBS, 30% Glycerol (glycerin, glycerine), 1% BSA
纯度	Protein A purified
克隆	单克隆
克隆编号	EP3081Y
同种型	IgG

应用

**The Abpromise guarantee**      **Abpromise™**承诺保证使用ab199243于以下的经测试应用

“应用说明”部分 下显示的仅为推荐的起始稀释度;实际最佳的稀释度/浓度应由使用者检定。

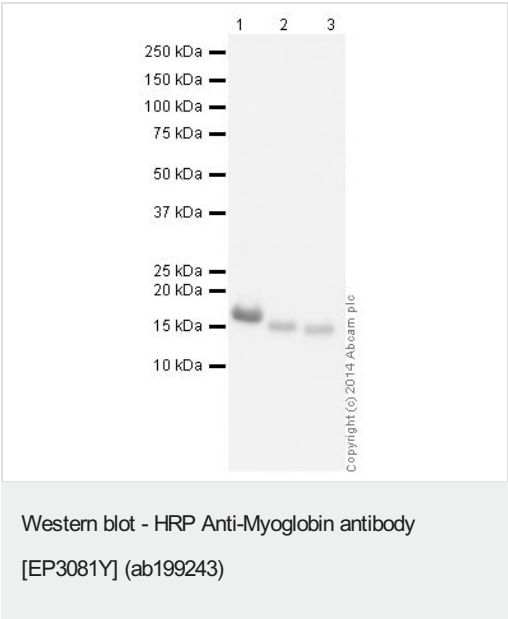
应用	Ab评论	说明
WB		1/5000. Detects a band of approximately 17 kDa (predicted molecular weight: 17 kDa).

靶标

**功能**      Serves as a reserve supply of oxygen and facilitates the movement of oxygen within muscles.

**序列相似性**      Belongs to the globin family.

图片



**All lanes :** HRP Anti-Myoglobin antibody [EP3081Y] (ab199243) at 1/5000 dilution

**Lane 1 :** Heart (Human) Tissue Lysate - adult normal tissue  
**Lane 2 :** Heart (Mouse) Tissue Lysate  
**Lane 3 :** Heart (Rat) Tissue Lysate

Lysates/proteins at 10 µg per lane.

Developed using the ECL technique.

Performed under reducing conditions.

**Predicted band size:** 17 kDa  
**Observed band size:** 17 kDa

**Exposure time:** 2 seconds

This blot was produced using a 4-12% Bis-tris gel under the MES buffer system. The gel was run at 200V for 35 minutes before being transferred onto a Nitrocellulose membrane at 30V for 70 minutes. The membrane was then blocked for an hour using 2% Bovine Serum Albumin before being incubated with ab199243 overnight at

4°C. Antibody binding was visualised using ECL development solution **ab133406**.

Why choose a recombinant antibody?

 <p><b>Research with confidence</b> Consistent and reproducible results</p>	 <p><b>Long-term and scalable supply</b> Recombinant technology</p>
 <p><b>Success from the first experiment</b> Confirmed specificity</p>	 <p><b>Ethical standards compliant</b> Animal-free production</p>

HRP Anti-Myoglobin antibody [EP3081Y]  
(ab199243)

**Please note:** All products are "FOR RESEARCH USE ONLY. NOT FOR USE IN DIAGNOSTIC PROCEDURES"

### Our Abpromise to you: Quality guaranteed and expert technical support

---

- Replacement or refund for products not performing as stated on the datasheet
- Valid for 12 months from date of delivery
- Response to your inquiry within 24 hours
- We provide support in Chinese, English, French, German, Japanese and Spanish
- Extensive multi-media technical resources to help you
- We investigate all quality concerns to ensure our products perform to the highest standards

If the product does not perform as described on this datasheet, we will offer a refund or replacement. For full details of the Abpromise, please visit <https://www.abcam.cn/abpromise> or contact our technical team.

### Terms and conditions

---

- Guarantee only valid for products bought direct from Abcam or one of our authorized distributors