

HRP Anti-Myelin oligodendrocyte glycoprotein antibody [EP4281] ab199236

重组 RabMAb

3 图像

概述

产品名称	HRP Anti-Myelin oligodendrocyte glycoprotein抗体[EP4281]
描述	HRP兔单克隆抗体[EP4281] to Myelin oligodendrocyte glycoprotein
宿主	Rabbit
偶联物	HRP
经测试应用	适用于: IHC-P, WB
种属反应性	与反应: Mouse, Rat, Human
免疫原	Synthetic peptide. This information is proprietary to Abcam and/or its suppliers.
阳性对照	WB: Mouse, rat and human brain tissue lysates. IHC-P: normal human cerebral cortex tissue sections
常规说明	Our RabMAb [®] technology is a patented hybridoma-based technology for making rabbit monoclonal antibodies. For details on our patents, please refer to RabMAb[®] patents .

性能

形式	Liquid
存放说明	Shipped at 4°C. Store at +4°C short term (1-2 weeks). Upon delivery aliquot. Store at -20°C. Avoid freeze / thaw cycle. Store In the Dark.
存储溶液	pH: 7.40 Preservative: 0.1% Proclin 300 Solution Constituents: PBS, 30% Glycerol (glycerin, glycerine), 1% BSA
纯度	Protein A purified
克隆	单克隆
克隆编号	EP4281
同种型	IgG

应用

The Abpromise guarantee

Abpromise™ 承诺保证使用 ab199236 于以下的经测试应用

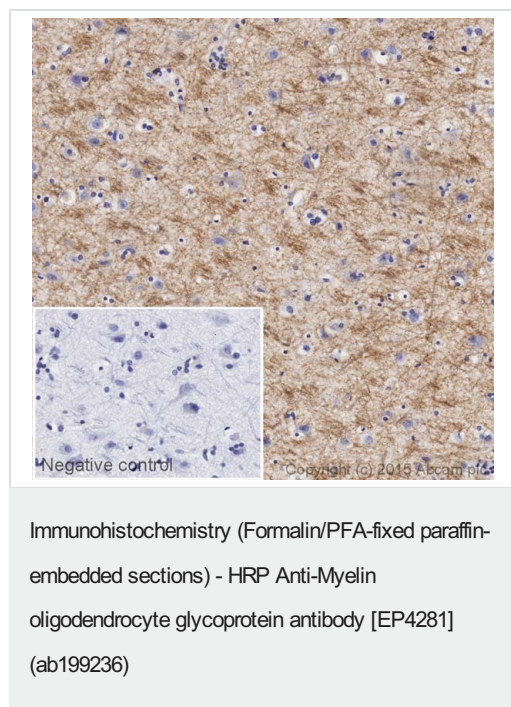
“应用说明”部分 下显示的仅为推荐的起始稀释度; 实际最佳的稀释度/浓度应由使用者检定。

应用	Ab 评论	说明
IHC-P		1/100. Perform heat mediated antigen retrieval with citrate buffer pH 6 before commencing with IHC staining protocol.
WB		1/1000 - 1/10000. Predicted molecular weight: 28 kDa.

靶标

功能	Mediates homophilic cell-cell adhesion (By similarity). Minor component of the myelin sheath. May be involved in completion and/or maintenance of the myelin sheath and in cell-cell communication.
组织特异性	Found exclusively in the CNS, where it is localized on the surface of myelin and oligodendrocyte cytoplasmic membranes.
序列相似性	Belongs to the immunoglobulin superfamily. BTN/MOG family. Contains 1 Ig-like V-type (immunoglobulin-like) domain.
细胞定位	Cell membrane.

图片



Immunohistochemistry (Formalin/PFA-fixed paraffin-embedded sections) - HRP Anti-Myelin oligodendrocyte glycoprotein antibody [EP4281] (ab199236)

IHC image of Myelin oligodendrocyte glycoprotein staining in a section of formalin-fixed paraffin-embedded normal human cerebral cortex, performed on a Leica BOND. The section was pre-treated using heat mediated antigen retrieval with sodium citrate buffer (pH6, epitope retrieval solution 1) for 20mins. The section was then incubated with ab199236, 1/100 dilution, for 15 mins at room temperature. DAB was used as the chromogen. The section was then counterstained with haematoxylin and mounted with DPX. The inset negative control image is taken from an identical assay without primary antibody.

For other IHC staining systems (automated and non-automated) customers should optimize variable parameters such as antigen retrieval conditions, primary antibody concentration and antibody incubation times.



Western blot - HRP Anti-Myelin oligodendrocyte glycoprotein antibody [EP4281] (ab199236)

All lanes : HRP Anti-Myelin oligodendrocyte glycoprotein antibody [EP4281] (ab199236) at 1/5000 dilution

Lane 1 : Brain (Mouse) Tissue Lysate

Lane 2 : Brain (Rat) Tissue Lysate

Lane 3 : Human brain tissue lysate - total protein ([ab29466](#))

Lysates/proteins at 10 µg per lane.

Developed using the ECL technique.

Performed under reducing conditions.

Predicted band size: 28 kDa

Observed band size: 26 kDa

Exposure time: 30 seconds

This blot was produced using a 4-12% Bis-tris gel under the MOPS buffer system. The gel was run at 200V for 50 minutes before being transferred onto a Nitrocellulose membrane at 30V for 70 minutes. The membrane was then blocked for an hour using 2% Bovine Serum Albumin before being incubated with ab199236 overnight at 4°C. Antibody binding was visualised using ECL development solution [ab133406](#).

Why choose a recombinant antibody?



Research with confidence
Consistent and reproducible results



Long-term and scalable supply
Recombinant technology



Success from the first experiment
Confirmed specificity



Ethical standards compliant
Animal-free production

HRP Anti-Myelin oligodendrocyte glycoprotein antibody [EP4281] (ab199236)

Please note: All products are "FOR RESEARCH USE ONLY. NOT FOR USE IN DIAGNOSTIC PROCEDURES"

Our Abpromise to you: Quality guaranteed and expert technical support

- Replacement or refund for products not performing as stated on the datasheet
- Valid for 12 months from date of delivery
- Response to your inquiry within 24 hours
- We provide support in Chinese, English, French, German, Japanese and Spanish
- Extensive multi-media technical resources to help you
- We investigate all quality concerns to ensure our products perform to the highest standards

If the product does not perform as described on this datasheet, we will offer a refund or replacement. For full details of the Abpromise, please visit <https://www.abcam.cn/abpromise> or contact our technical team.

Terms and conditions

- Guarantee only valid for products bought direct from Abcam or one of our authorized distributors