


HRP Anti-MMP8 antibody [EP1252Y] ab206065

RabMAb[®]

1 图像

概述

| | |
|-------|---|
| 产品名称 | HRP Anti-MMP8抗体[EP1252Y] |
| 描述 | HRP兔单克隆抗体[EP1252Y] to MMP8 |
| 宿主 | Rabbit |
| 偶联物 | HRP |
| 经测试应用 | 适用于: WB |
| 种属反应性 | 与反应: Rat 预测可用于: Mouse, Human  |
| 免疫原 | Synthetic peptide. This information is proprietary to Abcam and/or its suppliers. |
| 阳性对照 | WB: Rat Lung tissue lysate. |
| 常规说明 | Our RabMAb [®] technology is a patented hybridoma-based technology for making rabbit monoclonal antibodies. For details on our patents, please refer to RabMAb[®] patents . The Life Science industry has been in the grips of a reproducibility crisis for a number of years. Abcam is leading the way in addressing this with our range of recombinant monoclonal antibodies and knockout edited cell lines for gold-standard validation. Please check that this product meets your needs before purchasing. If you have any questions, special requirements or concerns, please send us an inquiry and/or contact our Support team ahead of purchase. Recommended alternatives for this product can be found below, along with publications, customer reviews and Q&As |

性能

| | |
|------|--|
| 形式 | Liquid |
| 存放说明 | Shipped at 4°C. Store at +4°C short term (1-2 weeks). Upon delivery aliquot. Store at -20°C. Stable for 12 months at -20°C. Store In the Dark. |
| 存储溶液 | pH: 7.40 Preservative: 0.1% Proclin 300 Solution Constituents: 30% Glycerol (glycerin, glycerine), 1% BSA, PBS |
| 纯度 | Affinity purified |
| 克隆 | 单克隆 |

克隆编号 EP1252Y

同种型 IgG

应用

The Abpromise guarantee **Abpromise™** 承诺保证使用ab206065于以下的经测试应用

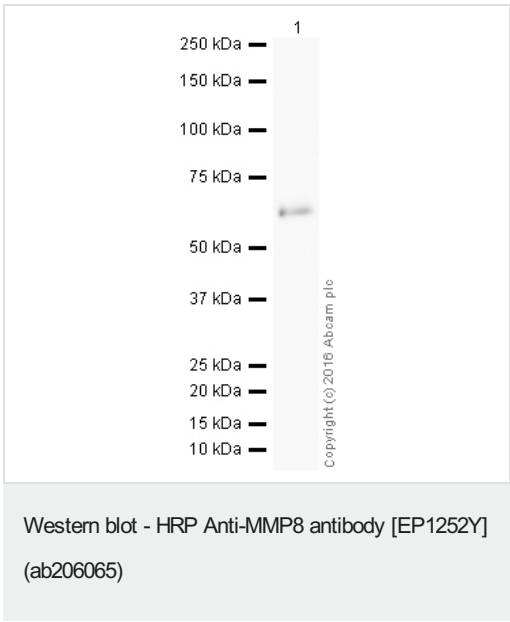
“应用说明”部分 下显示的仅为推荐的起始稀释度;实际最佳的稀释度/浓度应由使用者检定。

| 应用 | Ab评论 | 说明 |
|----|------|--|
| WB | | 1/1000. Detects a band of approximately 64 kDa (predicted molecular weight: 53 kDa). |

靶标

| | |
|-------|--|
| 功能 | Can degrade fibrillar type I, II, and III collagens. |
| 组织特异性 | Neutrophils. |
| 序列相似性 | Belongs to the peptidase M10A family. Contains 4 hemopexin-like domains. |
| 结构域 | The conserved cysteine present in the cysteine-switch motif binds the catalytic zinc ion, thus inhibiting the enzyme. The dissociation of the cysteine from the zinc ion upon the activation-peptide release activates the enzyme. |
| 细胞定位 | Cytoplasmic granule. Secreted > extracellular space > extracellular matrix. Stored in intracellular granules. |

图片



HRP Anti-MMP8 antibody [EP1252Y] (ab206065) at 1/1000 dilution
+ Lung (Rat) Tissue Lysate at 10 µg

Developed using the ECL technique.

Performed under reducing conditions.

Predicted band size: 53 kDa
Observed band size: 64 kDa

Exposure time: 20 minutes

This blot was produced using a 4-12% Bis-tris gel under the MOPS buffer system. The gel was run at 200V for 50 minutes before being

transferred onto a Nitrocellulose membrane at 30V for 70 minutes. The membrane was then blocked for an hour using 3% milk before being incubated with ab206065 overnight at 4°C. Antibody binding was visualised using ECL development solution **ab133406**.

Please note: All products are "FOR RESEARCH USE ONLY. NOT FOR USE IN DIAGNOSTIC PROCEDURES"

Our Abpromise to you: Quality guaranteed and expert technical support

- Replacement or refund for products not performing as stated on the datasheet
- Valid for 12 months from date of delivery
- Response to your inquiry within 24 hours
- We provide support in Chinese, English, French, German, Japanese and Spanish
- Extensive multi-media technical resources to help you
- We investigate all quality concerns to ensure our products perform to the highest standards

If the product does not perform as described on this datasheet, we will offer a refund or replacement. For full details of the Abpromise, please visit <https://www.abcam.cn/abpromise> or contact our technical team.

Terms and conditions

- Guarantee only valid for products bought direct from Abcam or one of our authorized distributors