


HRP Anti-IKK beta antibody [Y466] ab194713

敲除验证 重组 RabMAb

3 图像

概述	
产品名称	HRP Anti-IKK beta抗体[Y466]
描述	HRP兔单克隆抗体[Y466] to IKK beta
宿主	Rabbit
偶联物	HRP
经测试应用	适用于: WB
种属反应性	与反应: Human 预测可用于: Mouse 
免疫原	Synthetic peptide. This information is proprietary to Abcam and/or its suppliers.
阳性对照	WB: Daudi cell lysate and human cervical carcinoma. IHC-P: FFPE human breast adenocarcinoma.
常规说明	Our RabMAb <sup>®</sup> technology is a patented hybridoma-based technology for making rabbit monoclonal antibodies. For details on our patents, please refer to <a href="#">RabMAb<sup>®</sup> patents</a> .
性能	
形式	Liquid
存放说明	Shipped at 4°C. Store at +4°C short term (1-2 weeks). Upon delivery aliquot. Store at -20°C. Avoid freeze / thaw cycle. Store In the Dark.
存储溶液	pH: 7.40 Preservative: 0.1% Proclin 300 Solution Constituents: 30% Glycerol (glycerin, glycerine), 1% BSA, PBS
纯度	Protein A purified
克隆	单克隆
克隆编号	Y466
同种型	IgG
应用	

The Abpromise guarantee

Abpromise™承诺保证使用ab194713于以下的经测试应用

“应用说明”部分 下显示的仅为推荐的起始稀释度;实际最佳的稀释度/浓度应由使用者检定。

应用	Ab评论	说明
WB		1/5000. Detects a band of approximately 87 kDa (predicted molecular weight: 87 kDa).

靶标	
功能	Acts as part of the IKK complex in the conventional pathway of NF-kappa-B activation and phosphorylates inhibitors of NF-kappa-B thus leading to the dissociation of the inhibitor/NF-kappa-B complex and ultimately the degradation of the inhibitor. Also phosphorylates NCOA3.
组织特异性	Highly expressed in heart, placenta, skeletal muscle, kidney, pancreas, spleen, thymus, prostate, testis and peripheral blood.
序列相似性	Belongs to the protein kinase superfamily. Ser/Thr protein kinase family. I-kappa-B kinase subfamily. Contains 1 protein kinase domain.
翻译后修饰	Upon cytokine stimulation, phosphorylated on Ser-177 and Ser-181 by MEKK1 and/or MAP3K14/NIK; which enhances activity. Once activated, autophosphorylates on the C-terminal serine cluster; which decreases activity and prevents prolonged activation of the inflammatory response. Acetylation of Thr-180 by Yersinia yopJ prevents phosphorylation and activation, thus blocking the I-kappa-B pathway. Ubiquitinated. Monoubiquitination involves TRIM21 that leads to inhibition of Tax-induced NF-kappa-B signaling. According to PubMed:19675099, 'Ser-163' does not serve as a monoubiquitination site. According to PubMed:16267042, ubiquitination on 'Ser-163' modulates phosphorylation on C-terminal serine residues. Monoubiquitination by TRIM21 is disrupted by Yersinia yopJ.
细胞定位	Cytoplasm. Membrane raft. Colocalized with DPP4 in membrane rafts.

图片



Western blot - HRP Anti-IKK beta antibody [Y466]  
(ab194713)

**All lanes :** HRP Anti-IKK beta antibody [Y466] (ab194713) at  
1/5000 dilution

**Lane 1 :** Wild-type HAP1 whole cell lysate

**Lane 2 :** IKKBK (IKK beta) knockout HAP1 whole cell lysate

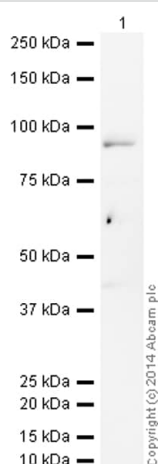
Lysates/proteins at 1/20 dilution per lane.

**Predicted band size:** 87 kDa

**Observed band size:** 87 kDa

**Exposure time:** 20 minutes

ab194713 was shown to recognize IKK beta in wild-type HAP1 cells as signal was lost at the expected MW in IKKBK (IKK beta) knockout cells. Additional cross-reactive bands were observed in the wild-type and knockout cells. Wild-type and IKKBK (IKK beta) knockout samples were subjected to SDS-PAGE. Ab194713 and **ab184095** (Mouse monoclonal [mAbcam 9484] to GAPDH - Loading Control (Alexa Fluor® 680) loading control) were incubated overnight at 4°C at 1/5000 dilution and 1/20000 dilution respectively. The loading control was imaged using the Licor Odyssey CLx prior to blots being developed with ECL technique.



Western blot - HRP Anti-IKK beta antibody [Y466]  
(ab194713)

HRP Anti-IKK beta antibody [Y466] (ab194713) at 1/5000 dilution +  
Daudi (Human Burkitt's lymphoma cell line) Whole Cell Lysate at 10  
µg

Developed using the ECL technique.

Performed under reducing conditions.

**Predicted band size:** 87 kDa





**Observed band size:** 87 kDa

**Exposure time:** 20 minutes

This blot was produced using a 4-12% Bis-tris gel under the MOPS buffer system. The gel was run at 200V for 50 minutes before being transferred onto a Nitrocellulose membrane at 30V for 70 minutes.

The membrane was then blocked for an hour using 2% milk before being incubated with ab194713 overnight at 4°C. Antibody binding was visualised using ECL development solution **ab133406**.

Why choose a recombinant antibody?

 <p><b>Research with confidence</b> Consistent and reproducible results</p>	 <p><b>Long-term and scalable supply</b> Recombinant technology</p>
 <p><b>Success from the first experiment</b> Confirmed specificity</p>	 <p><b>Ethical standards compliant</b> Animal-free production</p>

HRP Anti-IKK beta antibody [Y466] (ab194713)

**Please note:** All products are "FOR RESEARCH USE ONLY. NOT FOR USE IN DIAGNOSTIC PROCEDURES"

### Our Abpromise to you: Quality guaranteed and expert technical support

---

- Replacement or refund for products not performing as stated on the datasheet
- Valid for 12 months from date of delivery
- Response to your inquiry within 24 hours
- We provide support in Chinese, English, French, German, Japanese and Spanish
- Extensive multi-media technical resources to help you
- We investigate all quality concerns to ensure our products perform to the highest standards

If the product does not perform as described on this datasheet, we will offer a refund or replacement. For full details of the Abpromise, please visit <https://www.abcam.cn/abpromise> or contact our technical team.

### Terms and conditions

---

- Guarantee only valid for products bought direct from Abcam or one of our authorized distributors