

HRP Anti-IgA antibody [KT40] ab106765

2 图像

概述

产品名称	HRP Anti-IgA 抗体[KT40]
描述	HRP 小鼠单克隆抗体[KT40] to IgA
宿主	Mouse
偶联物	HRP
特异性	Ig alpha-1 chain C region and Ig alpha-2 chain C region (IgA1, IgA2). Does not cross-react with recombinant human IgG1, IgG2, IgG3, IgG4, IgM and IgE.
经测试应用	适用于: Sandwich ELISA
种属反应性	与反应: Human
免疫原	Recombinant full length protein corresponding to Human IgA. Database link: P01877
常规说明	<p>The Life Science industry has been in the grips of a reproducibility crisis for a number of years. Abcam is leading the way in addressing this with our range of recombinant monoclonal antibodies and knockout edited cell lines for gold-standard validation. Please check that this product meets your needs before purchasing.</p> <p>If you have any questions, special requirements or concerns, please send us an inquiry and/or contact our Support team ahead of purchase. Recommended alternatives for this product can be found below, along with publications, customer reviews and Q&As</p>

性能

形式	Liquid
存放说明	Shipped at 4°C. Store at +4°C short term (1-2 weeks). Store at -20°C or -80°C. Avoid freeze / thaw cycle.
存储溶液	Preservative: 0.01% Thimerosal (merthiolate) Constituent: PBS
纯度	Protein A purified
克隆	单克隆
克隆编号	KT40
同种型	IgG1

应用

The Abpromise guarantee **Abpromise™**承诺保证使用ab106765于以下的经测试应用

“应用说明”部分 下显示的仅为推荐的起始稀释度;实际最佳的稀释度/浓度应由使用者检定。

应用	Ab评论	说明
Sandwich ELISA		1/1000. Can be used as detection antibody when paired with ab106731 .

靶标

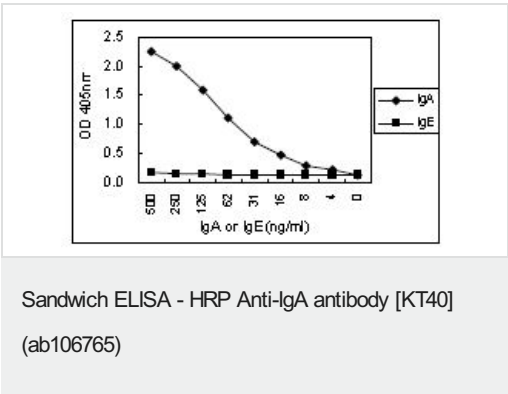
相关性

Human IgA (immunoglobulin A) is a glycosylated protein of 160 kDa and is produced as a monomer or as a J chain linked dimer. Monomeric IgA constitutes 5-15 % of the serum immunoglobulins whereas dimeric IgA is localized to mucosa surfaces such as saliva, gastrointestinal secretion, bronchial fluids and milk. Mucosal IgA plays a major role in host defence by neutralising infectious agents at mucosal surfaces. The production is usually local and antigen specific IgA producing B cells can be found in regions under the lamina propria where they mature into dimeric IgA producing plasma cells. IgA deficiency is the most common immunodeficiency that may affect both serum and mucosal produced IgA. OR: The secretory component is a component of immunoglobulin A (IgA) which consists of a portion of the polymeric immunoglobulin receptor. Polymeric IgA binds to the polymeric immunoglobulin receptor on the basolateral surface of epithelial cells and is taken up into the cell via transcytosis. The receptor-IgA complex passes through the cellular compartments before being secreted on the luminal surface of the epithelial cells, still attached to the receptor. Proteolysis of the receptor occurs and the dimeric IgA molecule, along with the secretory component, are free to diffuse throughout the lumen.

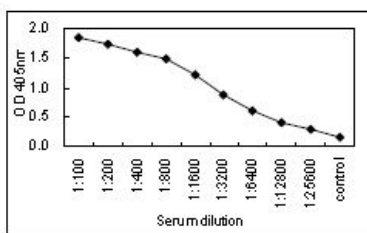
细胞定位

Secreted

图片



ab106765, at 1/1000 dilution, in sandwich ELISA for purified IgA2 using IgA (Human) coated plate. IgE is a negative control.



ab106765, at 1/1000 dilution, in sandwich ELISA for Human serum using IgA (Human) coated plate.

Sandwich ELISA - HRP Anti-IgA antibody [KT40]
(ab106765)

Please note: All products are "FOR RESEARCH USE ONLY. NOT FOR USE IN DIAGNOSTIC PROCEDURES"

Our Abpromise to you: Quality guaranteed and expert technical support

- Replacement or refund for products not performing as stated on the datasheet
- Valid for 12 months from date of delivery
- Response to your inquiry within 24 hours
- We provide support in Chinese, English, French, German, Japanese and Spanish
- Extensive multi-media technical resources to help you
- We investigate all quality concerns to ensure our products perform to the highest standards

If the product does not perform as described on this datasheet, we will offer a refund or replacement. For full details of the Abpromise, please visit <https://www.abcam.cn/abpromise> or contact our technical team.

Terms and conditions

- Guarantee only valid for products bought direct from Abcam or one of our authorized distributors