

### HRP Anti-GM-CSF antibody [KT35] ab106790

#### 2 图像

#### 概述

产品名称	HRP Anti-GM-CSF 抗体[KT35]
描述	HRP 大鼠单克隆抗体[KT35] to GM-CSF
宿主	Rat
偶联物	HRP
经测试应用	适用于: WB, Sandwich ELISA
种属反应性	与反应: Human
免疫原	Recombinant Human GM-CSF.
常规说明	<p>The Life Science industry has been in the grips of a reproducibility crisis for a number of years. Abcam is leading the way in addressing this with our range of recombinant monoclonal antibodies and knockout edited cell lines for gold-standard validation. Please check that this product meets your needs before purchasing.</p> <p>If you have any questions, special requirements or concerns, please send us an inquiry and/or contact our Support team ahead of purchase. Recommended alternatives for this product can be found below, along with publications, customer reviews and Q&amp;As</p>

#### 性能

形式	Liquid
存放说明	Shipped at 4°C. Store at +4°C.
存储溶液	Preservative: 0.01% Thimerosal (merthiolate) Constituent: PBS
纯度	Protein G purified
纯化说明	IgG is purified from culture supernatant through a Protein G column and labelled with horseradish peroxidase.
克隆	单克隆
克隆编号	KT35
同种型	IgG2a

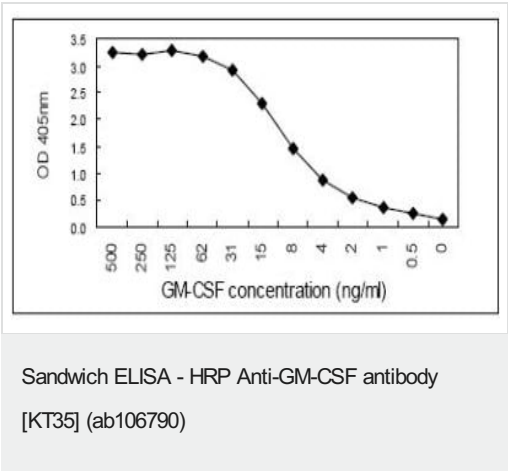
#### 应用

<b>The Abpromise guarantee</b> <b>Abpromise™</b> 承诺保证使用ab106790于以下的经测试应用		
“应用说明”部分 下显示的仅为推荐的起始稀释度;实际最佳的稀释度/浓度应由使用者检定。		
应用	Ab评论	说明
WB		Use at an assay dependent concentration. Predicted molecular weight: 16 kDa.
Sandwich ELISA		1/1000. Can be paired for Sandwich ELISA with <b>Rat monoclonal [KT37] to GM-CSF (ab106746)</b> . Can be used as detection antibody when paired with recommended antibody.

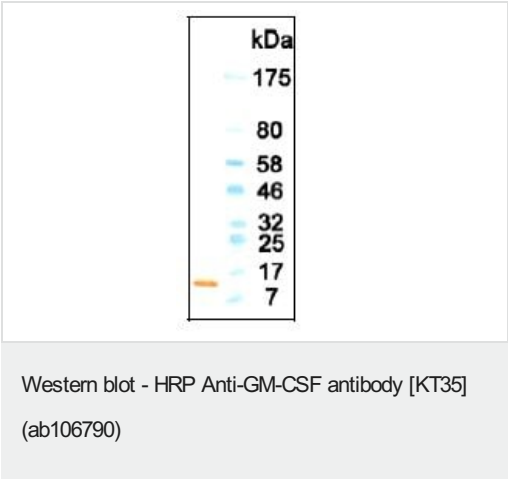
靶标

功能	Cytokine that stimulates the growth and differentiation of hematopoietic precursor cells from various lineages, including granulocytes, macrophages, eosinophils and erythrocytes.
序列相似性	Belongs to the GM-CSF family.
细胞定位	Secreted.

图片



ab106790, at a 1/1000 dilution, used as the detection antibody in a Sandwich ELISA. The capture antibody is an alternative anti-Human GM-CSF monoclonal.



HRP Anti-GM-CSF antibody [KT35] (ab106790) + Recombinant protein

**Predicted band size:** 16 kDa

ab106790 used as detection antibody.

**Please note:** All products are "FOR RESEARCH USE ONLY. NOT FOR USE IN DIAGNOSTIC PROCEDURES"

### **Our Abpromise to you: Quality guaranteed and expert technical support**

---

- Replacement or refund for products not performing as stated on the datasheet
- Valid for 12 months from date of delivery
- Response to your inquiry within 24 hours
- We provide support in Chinese, English, French, German, Japanese and Spanish
- Extensive multi-media technical resources to help you
- We investigate all quality concerns to ensure our products perform to the highest standards

If the product does not perform as described on this datasheet, we will offer a refund or replacement. For full details of the Abpromise, please visit <https://www.abcam.cn/abpromise> or contact our technical team.

### **Terms and conditions**

---

- Guarantee only valid for products bought direct from Abcam or one of our authorized distributors