

HRP Anti-GAPDH antibody [3E8AD9] - Loading Control ab198306

2 图像

概述

产品名称	HRP Anti-GAPDH抗体[3E8AD9] - Loading Control
描述	HRP小鼠单克隆抗体[3E8AD9] to GAPDH - Loading Control
宿主	Mouse
偶联物	HRP
经测试应用	适用于: WB, IHC-P
种属反应性	与反应: Human
免疫原	Full length native protein (purified). This information is proprietary to Abcam and/or its suppliers.
阳性对照	WB: HepG2 whole cell lysate. IHC-P: FFPE human liver (normal) tissue sections.
常规说明	<p>The Life Science industry has been in the grips of a reproducibility crisis for a number of years. Abcam is leading the way in addressing this with our range of recombinant monoclonal antibodies and knockout edited cell lines for gold-standard validation. Please check that this product meets your needs before purchasing.</p> <p>If you have any questions, special requirements or concerns, please send us an inquiry and/or contact our Support team ahead of purchase. Recommended alternatives for this product can be found below, along with publications, customer reviews and Q&As</p>

性能

形式	Liquid
存放说明	Shipped at 4°C. Upon delivery aliquot. Store at +4°C. Avoid freeze / thaw cycle. Store In the Dark.
存储溶液	pH: 7.40 Preservative: 0.1% Proclin 300 Solution Constituents: 30% Glycerol (glycerin, glycerine), 1% BSA, PBS
纯化说明	Purity >95% by SDS-PAGE.
克隆	单克隆
克隆编号	3E8AD9
同种型	IgG2b
轻链类型	kappa

应用

The Abpromise guarantee

Abpromise™承诺保证使用ab198306于以下的经测试应用

“应用说明”部分 下显示的仅为推荐的起始稀释度;实际最佳的稀释度/浓度应由使用者检定。

应用	Ab评论	说明
WB		1/5000. Detects a band of approximately 36 kDa (predicted molecular weight: 36 kDa).
IHC-P		1/50. Perform heat mediated antigen retrieval with citrate buffer pH 6 before commencing with IHC staining protocol.

靶标

功能

Has both glyceraldehyde-3-phosphate dehydrogenase and nitrosylase activities, thereby playing a role in glycolysis and nuclear functions, respectively. Participates in nuclear events including transcription, RNA transport, DNA replication and apoptosis. Nuclear functions are probably due to the nitrosylase activity that mediates cysteine S-nitrosylation of nuclear target proteins such as SIRT1, HDAC2 and PRKDC (By similarity). Glyceraldehyde-3-phosphate dehydrogenase is a key enzyme in glycolysis that catalyzes the first step of the pathway by converting D-glyceraldehyde 3-phosphate (G3P) into 3-phospho-D-glyceroyl phosphate.

通路

Carbohydrate degradation; glycolysis; pyruvate from D-glyceraldehyde 3-phosphate: step 1/5.

序列相似性

Belongs to the glyceraldehyde-3-phosphate dehydrogenase family.

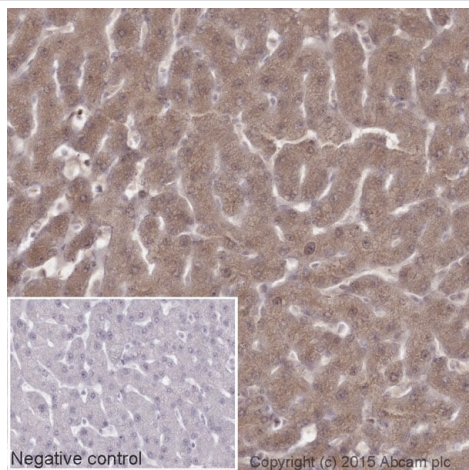
翻译后修饰

S-nitrosylation of Cys-152 leads to interaction with SIAH1, followed by translocation to the nucleus.
ISGylated.

细胞定位

Cytoplasm > cytosol. Nucleus. Cytoplasm > perinuclear region. Membrane. Translocates to the nucleus following S-nitrosylation and interaction with SIAH1, which contains a nuclear localization signal (By similarity). Postnuclear and Perinuclear regions.

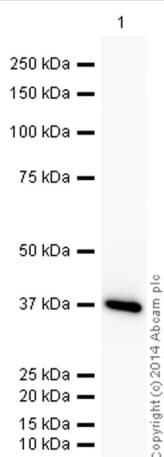
图片



Immunohistochemistry (Formalin/PFA-fixed paraffin-embedded sections) - HRP Anti-GAPDH antibody [3E8AD9] - Loading Control (ab198306)

IHC image of GAPDH staining in a section of formalin-fixed paraffin-embedded normal human liver tissue*. The section was pre-treated using pressure cooker heat mediated antigen retrieval with sodium citrate buffer (pH6) for 30mins, and incubated overnight at +4°C with ab198306 at 1/50 dilution. DAB was used as the chromogen (**ab103723**), diluted 1/100 and incubated for 10min at room temperature. The section was counterstained with haematoxylin and mounted with DPX. The inset negative control image is taken from an identical assay without primary antibody. For other IHC staining systems (automated and non-automated) customers should optimize variable parameters such as antigen retrieval conditions, primary antibody concentration and antibody incubation times.

*Tissue obtained from the Human Research Tissue Bank, supported by the NIHR Cambridge Biomedical Research Centre



Western blot - HRP Anti-GAPDH antibody [3E8AD9] - Loading Control (ab198306)

HRP Anti-GAPDH antibody [3E8AD9] - Loading Control (ab198306) at 1/5000 dilution + HepG2 (Human hepatocellular liver carcinoma cell line) Whole Cell Lysate at 10 µg

Developed using the ECL technique.

Performed under reducing conditions.

Predicted band size: 36 kDa

Observed band size: 36 kDa

Exposure time: 2 minutes

This blot was produced using a 4-12% Bis-tris gel under the MOPS buffer system. The gel was run at 200V for 50 minutes before being transferred onto a Nitrocellulose membrane at 30V for 70 minutes. The membrane was then blocked for an hour using 2% Bovine Serum Albumin before being incubated with ab198306 overnight at 4°C. Antibody binding was visualised using ECL development solution **ab133406**.

Please note: All products are "FOR RESEARCH USE ONLY. NOT FOR USE IN DIAGNOSTIC PROCEDURES"

Our Abpromise to you: Quality guaranteed and expert technical support

- Replacement or refund for products not performing as stated on the datasheet
- Valid for 12 months from date of delivery
- Response to your inquiry within 24 hours

- We provide support in Chinese, English, French, German, Japanese and Spanish
- Extensive multi-media technical resources to help you
- We investigate all quality concerns to ensure our products perform to the highest standards

If the product does not perform as described on this datasheet, we will offer a refund or replacement. For full details of the Abpromise, please visit <https://www.abcam.cn/abpromise> or contact our technical team.

Terms and conditions

- Guarantee only valid for products bought direct from Abcam or one of our authorized distributors