

HRP Anti-FOXP3 antibody [mAbcam 22510] ab22831

★★★★★ 2 Abreviews 1 图像

概述	
产品名称	HRP Anti-FOXP3抗体[mAbcam 22510]
描述	HRP小鼠单克隆抗体[mAbcam 22510] to FOXP3
宿主	Mouse
偶联物	HRP
经测试应用	适用于: WB
种属反应性	与反应: Human
免疫原	Synthetic peptide corresponding to Human FOXP3 aa 400 to the C-terminus. (Peptide available as ab16809)
常规说明	<p>The Life Science industry has been in the grips of a reproducibility crisis for a number of years. Abcam is leading the way in addressing this with our range of recombinant monoclonal antibodies and knockout edited cell lines for gold-standard validation. Please check that this product meets your needs before purchasing.</p> <p>If you have any questions, special requirements or concerns, please send us an inquiry and/or contact our Support team ahead of purchase. Recommended alternatives for this product can be found below, along with publications, customer reviews and Q&As</p>

性能	
形式	Liquid
存放说明	Shipped at 4°C. Store at +4°C. Avoid freeze / thaw cycle. Store In the Dark.
存储溶液	pH: 7.40 Preservative: 0.1% Proclin 300 Solution Constituents: PBS, 1% BSA, 30% Glycerol (glycerin, glycerine)
纯度	IgG fraction
克隆	单克隆
克隆编号	mAbcam 22510
同种型	IgG1
轻链类型	kappa

The Abpromise guarantee **Abpromise™**承诺保证使用ab22831于以下的经测试应用

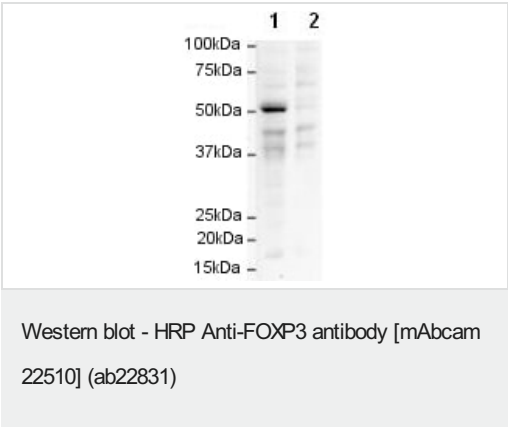
“应用说明”部分 下显示的仅为推荐的起始稀释度;实际最佳的稀释度/浓度应由使用者检定。

应用	Ab评论	说明
WB	★★★★★ (1)	1/1000. Detects a band of approximately 50 kDa (predicted molecular weight: 50 kDa).

靶标

功能	Probable transcription factor. Plays a critical role in the control of immune response.
疾病相关	Defects in FOXP3 are the cause of immunodeficiency polyendocrinopathy, enteropathy, X-linked syndrome (IPEX) [MIM:304790]; also known as X-linked autoimmunity-immunodeficiency syndrome. IPEX is characterized by neonatal onset insulin-dependent diabetes mellitus, infections, secretory diarrhea, trombocytopenia, anemia and eczema. It is usually lethal in infancy.
序列相似性	Contains 1 C2H2-type zinc finger. Contains 1 fork-head DNA-binding domain.
细胞定位	Nucleus.

图片



All lanes : HRP Anti-FOXP3 antibody [mAbcam 22510] (ab22831) at 1/1000 dilution

Lane 1 : HEK 293 cells overexpressing human FOXP3
Lane 2 : HEK 293 cells overexpressing human FOXP3 with Human FOXP3 peptide (**ab16809**) at 1 µg/ml

Developed using the ECL technique.
Performed under reducing conditions.

Predicted band size: 50 kDa
Observed band size: 50 kDa

Exposure time: 3 minutes

Please note: All products are "FOR RESEARCH USE ONLY. NOT FOR USE IN DIAGNOSTIC PROCEDURES"

Our Abpromise to you: Quality guaranteed and expert technical support

- Replacement or refund for products not performing as stated on the datasheet
- Valid for 12 months from date of delivery
- Response to your inquiry within 24 hours
- We provide support in Chinese, English, French, German, Japanese and Spanish
- Extensive multi-media technical resources to help you
- We investigate all quality concerns to ensure our products perform to the highest standards

If the product does not perform as described on this datasheet, we will offer a refund or replacement. For full details of the Abpromise, please visit <https://www.abcam.cn/abpromise> or contact our technical team.

Terms and conditions

- Guarantee only valid for products bought direct from Abcam or one of our authorized distributors