

HRP Anti-Fluorescein antibody ab6656

★★★★★ [2 Abreviews](#) [7 References](#) [2 图像](#)

概述

产品名称	HRP Anti-Fluorescein抗体
描述	HRP山羊多克隆抗体to Fluorescein
宿主	Goat
偶联物	HRP
特异性	This antibody reacts with FITC-conjugated proteins.
经测试应用	适用于: ELISA, IHC-P, IHC-Fr, WB
种属反应性	与反应: Species independent
免疫原	Chemical/ Small Molecule corresponding to Fluorescein. Fluorescein conjugated to Goat IgG
常规说明	<p>The Life Science industry has been in the grips of a reproducibility crisis for a number of years. Abcam is leading the way in addressing this with our range of recombinant monoclonal antibodies and knockout edited cell lines for gold-standard validation. Please check that this product meets your needs before purchasing.</p> <p>If you have any questions, special requirements or concerns, please send us an inquiry and/or contact our Support team ahead of purchase. Recommended alternatives for this product can be found below, along with publications, customer reviews and Q&As</p>

性能

形式	Liquid
存放说明	Shipped at 4°C. Store at +4°C.
存储溶液	<p>pH: 6.5</p> <p>Preservative: 0.01% Gentamicin sulphate</p> <p>Constituents: 0.42% Tripotassium orthophosphate, 0.87% Sodium chloride, 1% BSA</p>
纯度	Affinity purified
纯化说明	This product was prepared from monospecific antiserum by immunoaffinity chromatography using Fluorescein IgG coupled to agarose beads followed by solid phase adsorption(s) to remove any unwanted reactivities.
克隆	多克隆
同种型	IgG

应用

The Abpromise guarantee **Abpromise™**承诺保证使用ab6656于以下的经测试应用

“应用说明”部分 下显示的仅为推荐的起始稀释度;实际最佳的稀释度/浓度应由使用者检定。

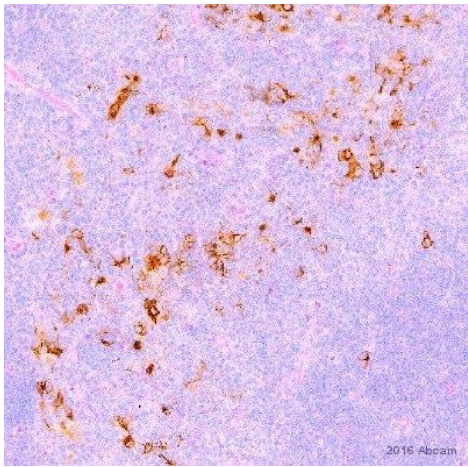
应用	Ab评论	说明
ELISA		1/200000.
IHC-P	★★★★★ (1)	1/500 - 1/2500.
IHC-Fr	★★★★★ (1)	Use at an assay dependent concentration.
WB		1/1000 - 1/5000.

靶标

相关性

Fluorescein is a fluorophore commonly used to label proteins - protein-fluorescein conjugates are not usually susceptible to precipitation. In addition to its relatively high absorptivity, excellent fluorescence quantum yield and good water solubility, fluorescein has an excitation maximum of 494 nm that closely matches the 488 nm spectral line of the argon-ion laser, making it an important fluorophore for confocal laser-scanning microscopy and flow cytometry applications. Its fluorescence is pH sensitive and is significantly reduced below pH 7. Fluorescein emits most strongly between 500 and 550 nm, but it has a relatively broad emission spectrum reaching to over 600 nm. Several derivatives of fluorescein are commonly used, including FITC (fluorescein isothiocyanate), carboxylates and succinimidyl esters.

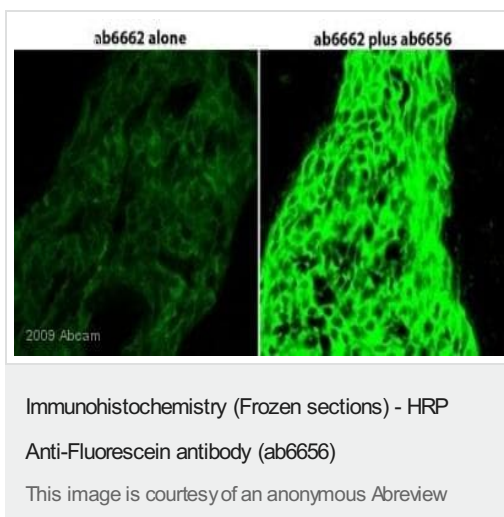
图片



Immunohistochemistry (Formalin/PFA-fixed paraffin-embedded sections) - HRP Anti-Fluorescein antibody (ab6656)

This image is courtesy of an anonymous Abreview

Immunohistochemical analysis of Mouse thymus in which the medullary epithelial cells are labelled with fluorescein-conjugated UEA1 lectin with ab6656. Tissue was fixed with paraformaldehyde and blocked with 1% BSA for 40 minutes at 20°C. Samples were incubated with primary antibody (1/1000) for 1 hour at 20°C.



ab6656 staining GFP in Mouse mammary carcinoma metastasis tissue sections by Immunohistochemistry (IHC-Fr - frozen sections). Perfusion fixed tissue with 4% paraformaldehyde, blocked with 0.5% Perkin-Elmer TNB blocking reagent for 30 minutes at 25°C and permeabilized with 0.1% Triton X-100. Samples were incubated with primary antibody (1/500) for 30 minutes at 25°C

Micrograph demonstrates use of **ab6662** for detection of GFP-positive tumor cells (LEFT) and an adjacent section after amplification with ab6656 (RIGHT). Images were taken with identical settings on a Leica confocal microscope.

Please note: All products are "FOR RESEARCH USE ONLY. NOT FOR USE IN DIAGNOSTIC PROCEDURES"

Our Abpromise to you: Quality guaranteed and expert technical support

- Replacement or refund for products not performing as stated on the datasheet
- Valid for 12 months from date of delivery
- Response to your inquiry within 24 hours
- We provide support in Chinese, English, French, German, Japanese and Spanish
- Extensive multi-media technical resources to help you
- We investigate all quality concerns to ensure our products perform to the highest standards

If the product does not perform as described on this datasheet, we will offer a refund or replacement. For full details of the Abpromise, please visit <https://www.abcam.cn/abpromise> or contact our technical team.

Terms and conditions

- Guarantee only valid for products bought direct from Abcam or one of our authorized distributors