

HRP Anti-Cyclin B1 antibody [Y106] ab193977

敲除验证 重组 RabMAb

3 图像

概述

产品名称	HRP Anti-Cyclin B1 抗体[Y106]
描述	HRP 兔单克隆抗体[Y106] to Cyclin B1
宿主	Rabbit
偶联物	HRP
经测试应用	适用于: WB
种属反应性	与反应: Human 不与反应: Mouse, Rat
免疫原	Synthetic peptide. This information is proprietary to Abcam and/or its suppliers.
表位	ab32053 reacts with an epitope located in teh C terminal region of Cyclin B1.
阳性对照	Jurkat and Hela cell lysate.
常规说明	Our RabMAb [®] technology is a patented hybridoma-based technology for making rabbit monoclonal antibodies. For details on our patents, please refer to RabMAb[®] patents .

性能

形式	Liquid
存放说明	Shipped at 4°C. Store at +4°C short term (1-2 weeks). Upon delivery aliquot. Store at -20°C. Avoid freeze / thaw cycle. Store In the Dark.
存储溶液	pH: 7.40 Preservative: 0.1% Proclin 300 Solution Constituents: PBS, 30% Glycerol (glycerin, glycerine), 1% BSA
纯度	Protein A purified
克隆	单克隆
克隆编号	Y106
同种型	IgG

应用

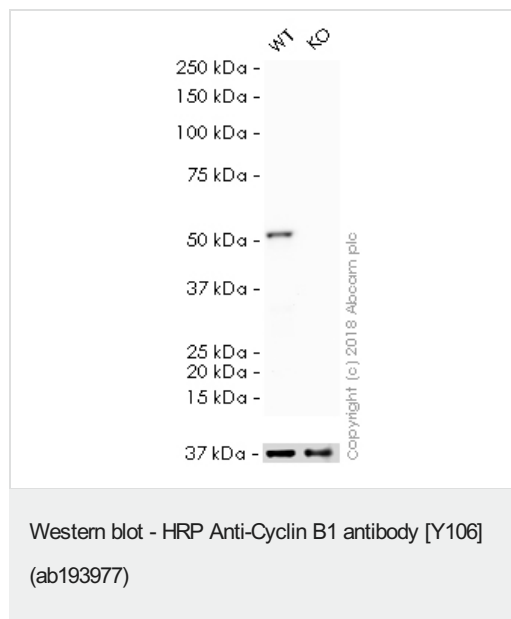
“应用说明”部分下显示的仅为推荐的起始稀释度；实际最佳的稀释度/浓度应由使用者检定。

应用	Ab评论	说明
WB		1/5000. Predicted molecular weight: 58 kDa.

靶标

功能	Essential for the control of the cell cycle at the G2/M (mitosis) transition.
序列相似性	Belongs to the cyclin family. Cyclin AB subfamily.
发展阶段	Accumulates steadily during G2 and is abruptly destroyed at mitosis.
翻译后修饰	Ubiquitinated by the SCF(NIPA) complex during interphase, leading to its destruction. Not ubiquitinated during G2/M phases.
细胞定位	Cytoplasm. Nucleus. Cytoplasm > cytoskeleton > centrosome.

图片



All lanes : HRP Anti-Cyclin B1 antibody [Y106] (ab193977) at 1/5000 dilution

Lane 1 : Wild-type HAP1 whole cell lysate

Lane 2 : CCNB1 (Cyclin B1) knockout HAP1 whole cell lysate

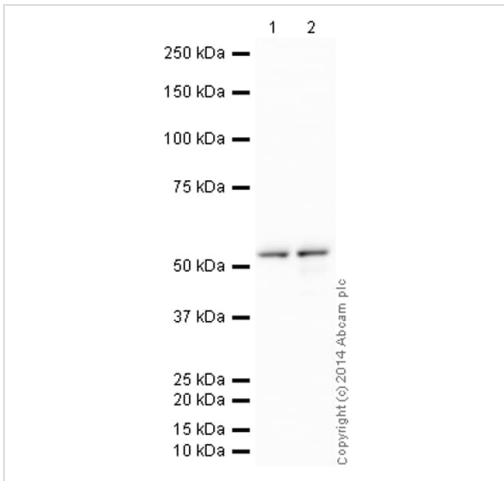
Lysates/proteins at 20 µg per lane.

Predicted band size: 58 kDa

Observed band size: 51 kDa

Exposure time: 1 minute

ab193977 was shown to specifically react with Cyclin B1 in wild-type HAP1 cells as signal was lost in CCNB1 (Cyclin B1) knockout cells. Wild-type and CCNB1 (Cyclin B1) knockout samples were subjected to SDS-PAGE. Ab193977 and [ab184095](#) (Mouse monoclonal [mAbcam 9484] to GAPDH - Loading Control (Alexa Fluor® 680) loading control) were incubated overnight at 4°C at 1/5000 dilution and 1/1000 dilution respectively. The loading control was imaged using the Licor Odyssey CLx prior to blots being developed with ECL technique.



Western blot - HRP Anti-Cyclin B1 antibody [Y106] (ab193977)

All lanes : HRP Anti-Cyclin B1 antibody [Y106] (ab193977) at 1/5000 dilution

Lane 1 : HeLa whole cell lysate ([ab150035](#))

Lane 2 : Jurkat (Human T cell lymphoblast-like cell line) Whole Cell Lysate

Lysates/proteins at 10 µg per lane.

Developed using the ECL technique.

Performed under reducing conditions.

Predicted band size: 58 kDa

Observed band size: 58 kDa

Exposure time: 1 minute

This blot was produced using a 4-12% Bis-tris gel under the MOPS buffer system. The gel was run at 200V for 50 minutes before being transferred onto a Nitrocellulose membrane at 30V for 70 minutes. The membrane was then blocked for an hour using 2% Bovine Serum Albumin before being incubated with ab193977 overnight at 4°C. Antibody binding was visualised using ECL development solution [ab133406](#).

Why choose a recombinant antibody?

 <p>Research with confidence Consistent and reproducible results</p>	 <p>Long-term and scalable supply Recombinant technology</p>
 <p>Success from the first experiment Confirmed specificity</p>	 <p>Ethical standards compliant Animal-free production</p>

HRP Anti-Cyclin B1 antibody [Y106] (ab193977)

Please note: All products are "FOR RESEARCH USE ONLY. NOT FOR USE IN DIAGNOSTIC PROCEDURES"

Our Abpromise to you: Quality guaranteed and expert technical support

- Replacement or refund for products not performing as stated on the datasheet
- Valid for 12 months from date of delivery
- Response to your inquiry within 24 hours

- We provide support in Chinese, English, French, German, Japanese and Spanish
- Extensive multi-media technical resources to help you
- We investigate all quality concerns to ensure our products perform to the highest standards

If the product does not perform as described on this datasheet, we will offer a refund or replacement. For full details of the Abpromise, please visit <https://www.abcam.cn/abpromise> or contact our technical team.

Terms and conditions

- Guarantee only valid for products bought direct from Abcam or one of our authorized distributors