

HRP Anti-CHREBP antibody ab81958

★★★★★ [1 Abreviews](#) [5 References](#) [4 图像](#)

概述

产品名称	HRP Anti-CHREBP抗体
描述	HRP兔多克隆抗体to CHREBP
宿主	Rabbit
偶联物	HRP
特异性	A customer has observed some cross-reactivity with MLX-interacting protein (Q9HAP2). Although the exact sequence is proprietary, the immunogen for ab81958 shows 75% homology with this protein.
经测试应用	适用于: WB, IHC-P, ICC/IF
种属反应性	与反应: Human
免疫原	Synthetic peptide within Human CHREBP aa 800 to the C-terminus (C terminal). The exact immunogen sequence used to generate this antibody is proprietary information. If additional detail on the immunogen is needed to determine the suitability of the antibody for your needs, please contact our Scientific Support team to discuss your requirements. NP_116569.1 Database link: Q9NP71
阳性对照	Human hepatocyte lysate, human hepatocytes, liver nuclear extracts from well fed rats, and colon epithelium.
常规说明	<p>The Life Science industry has been in the grips of a reproducibility crisis for a number of years. Abcam is leading the way in addressing this with our range of recombinant monoclonal antibodies and knockout edited cell lines for gold-standard validation. Please check that this product meets your needs before purchasing.</p> <p>If you have any questions, special requirements or concerns, please send us an inquiry and/or contact our Support team ahead of purchase. Recommended alternatives for this product can be found below, along with publications, customer reviews and Q&As</p>

性能

形式	Liquid
存放说明	Shipped at 4°C. Store at +4°C.
存储溶液	Constituent: PBS
纯度	Immunogen affinity purified
纯化说明	Purified rabbit antisera.

克隆 多克隆
同种型 IgG

应用

The Abpromise guarantee **Abpromise™**承诺保证使用ab81958于以下的经测试应用

“应用说明”部分 下显示的仅为推荐的起始稀释度;实际最佳的稀释度/浓度应由使用者检定。

应用	Ab评论	说明
WB	★★★★☆ (1)	Use at an assay dependent dilution. Predicted molecular weight: 95 kDa.
IHC-P		Use at an assay dependent dilution.
ICC/IF		1/100 - 1/500.

靶标

功能 Transcriptional repressor. Binds to the canonical and non-canonical E box sequences 5'-CACGTG-3'.

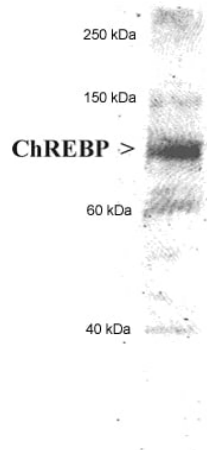
组织特异性 Expressed in liver, heart, kidney, cerebellum and intestinal tissues.

疾病相关 Note=WBSCR14 is located in the Williams-Beuren syndrome (WBS) critical region. WBS results from a hemizygous deletion of several genes on chromosome 7q11.23, thought to arise as a consequence of unequal crossing over between highly homologous low-copy repeat sequences flanking the deleted region. Haploinsufficiency of WBSCR14 may be the cause of certain cardiovascular and musculo-skeletal abnormalities observed in the disease.

序列相似性 Contains 1 basic helix-loop-helix (bHLH) domain.

细胞定位 Nucleus.

图片



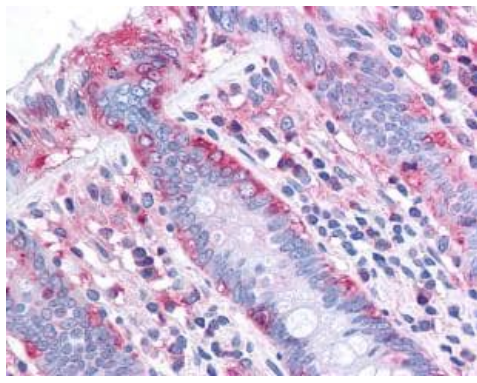
Western blot - HRP Anti-CHREBP antibody (ab81958)

anti CHREBP (unconjugated form of ab81958) + human hepatocyte lysate at 20 µg

Predicted band size: 95 kDa

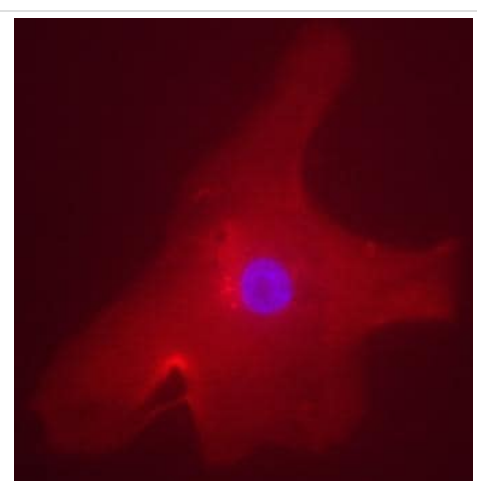
Observed band size: 95 kDa

5-10 second film exposure.



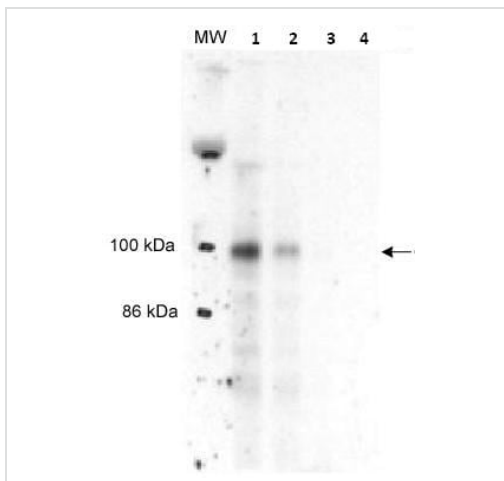
Immunohistochemistry (Formalin/PFA-fixed paraffin-embedded sections) - HRP Anti-CHREBP antibody (ab81958)

anti CHREBP (unconjugated form of ab81958), staining CHREBP in human colon epithelium (40X) by immunohistochemistry.



Immunocytochemistry/ Immunofluorescence - HRP Anti-CHREBP antibody (ab81958)

anti CHREBP (unconjugated form of ab81958), at a 1/100 dilution, staining CHREBP in human hepatocyte by Immunofluorescence. Overlay staining of ChREBP (rhodamine red) and DAPI nuclear staining (blue).



Western blot - HRP Anti-CHREBP antibody
(ab81958)

All lanes : anti CHREBP (unconjugated form of ab81958), at 1/1000 dilution

Lane 1 : liver nuclear extracts from well fed rats at 10 µg

Lane 2 : liver nuclear extracts from well fed rats at 5 µg

Lane 3 : liver nuclear extracts from well fed rats at 1 µg

Lane 4 : liver nuclear extracts from well fed rats at 0.5 µg

Predicted band size: 95 kDa

Observed band size: 95 kDa

7% SDS gel.

Please note: All products are "FOR RESEARCH USE ONLY. NOT FOR USE IN DIAGNOSTIC PROCEDURES"

Our Abpromise to you: Quality guaranteed and expert technical support

- Replacement or refund for products not performing as stated on the datasheet
- Valid for 12 months from date of delivery
- Response to your inquiry within 24 hours
- We provide support in Chinese, English, French, German, Japanese and Spanish
- Extensive multi-media technical resources to help you
- We investigate all quality concerns to ensure our products perform to the highest standards

If the product does not perform as described on this datasheet, we will offer a refund or replacement. For full details of the Abpromise, please visit <https://www.abcam.cn/abpromise> or contact our technical team.

Terms and conditions

- Guarantee only valid for products bought direct from Abcam or one of our authorized distributors