


HRP Anti-CD21 antibody [EP3093] ab202354

重组 RabMAb

3 图像

概述

产品名称	HRP Anti-CD21抗体[EP3093]
描述	HRP兔单克隆抗体[EP3093] to CD21
宿主	Rabbit
偶联物	HRP
经测试应用	适用于: WB, IHC-P
种属反应性	与反应: Human 预测可用于: Mouse 
免疫原	Synthetic peptide. This information is proprietary to Abcam and/or its suppliers.
阳性对照	WB: Raji whole cell lysate. IHC-P: FFPE human tonsil (normal) tissue sections.
常规说明	Our RabMAb <sup>®</sup> technology is a patented hybridoma-based technology for making rabbit monoclonal antibodies. For details on our patents, please refer to <a href="#">RabMAb<sup>®</sup> patents</a> .

性能

形式	Liquid
存放说明	Shipped at 4°C. Store at +4°C short term (1-2 weeks). Upon delivery aliquot. Store at -20°C. Avoid freeze / thaw cycle. Store In the Dark.
存储溶液	pH: 7.40 Preservative: 0.1% Proclin 300 Solution Constituents: PBS, 30% Glycerol (glycerin, glycerine), 1% BSA
纯度	Protein A purified
克隆	单克隆
克隆编号	EP3093
同种型	IgG

应用

The Abpromise guarantee Abpromise<sup>™</sup> 承诺保证使用ab202354于以下的经测试应用

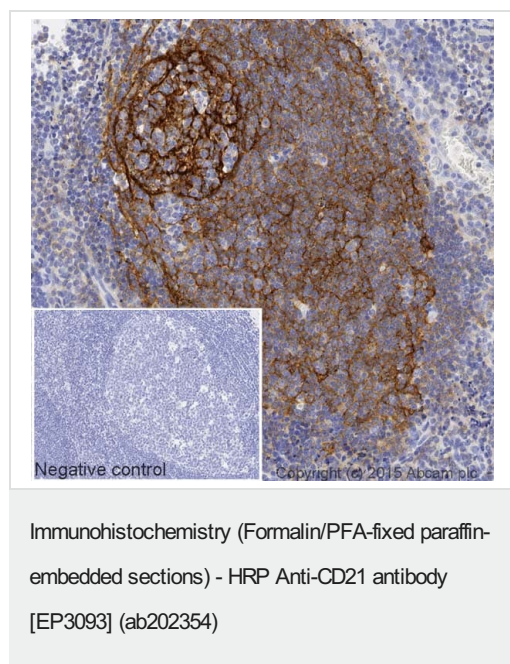
“应用说明”部分 下显示的仅为推荐的起始稀释度;实际最佳的稀释度/浓度应由使用者检定。

应用	Ab评论	说明
WB		1/5000. Detects a band of approximately 155 kDa (predicted molecular weight: 113 kDa).
IHC-P		1/250. Perform heat mediated antigen retrieval with citrate buffer pH 6 before commencing with IHC staining protocol.

## 靶标

功能	Receptor for complement C3Dd, for the Epstein-Barr virus on human B-cells and T-cells and for HNRPU. Participates in B lymphocytes activation.
组织特异性	Mature B-lymphocytes, T-lymphocytes, pharyngeal epithelial cells, astrocytes and follicular dendritic cells of the spleen.
疾病相关	Genetic variations in CR2 are associated with susceptibility to systemic lupus erythematosus type 9 (SLEB9) [MIM:610927]. Systemic lupus erythematosus (SLE) is a chronic autoimmune disease with a complex genetic basis. SLE is an inflammatory, and often febrile multisystemic disorder of connective tissue characterized principally by involvement of the skin, joints, kidneys, and serosal membranes. It is thought to represent a failure of the regulatory mechanisms of the autoimmune system.
序列相似性	Belongs to the receptors of complement activation (RCA) family. Contains 15 Sushi (CCP/SCR) domains.
细胞定位	Membrane.

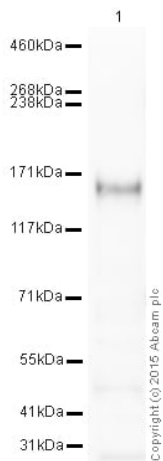
## 图片



IHC image of CD21 staining in a section of formalin-fixed paraffin-embedded normal human tonsil tissue\*, performed on a Leica BOND™. The section was pre-treated using heat mediated antigen retrieval with sodium citrate buffer (pH6, epitope retrieval solution 1) for 20mins. The section was then incubated with ab202354, 1/250 dilution, for 15 mins at room temperature. DAB was used as the chromogen. The section was then counterstained with haematoxylin and mounted with DPX. The inset negative control image is taken from an identical assay without primary antibody.

For other IHC staining systems (automated and non-automated) customers should optimize variable parameters such as antigen retrieval conditions, primary antibody concentration and antibody incubation times.

\*Tissue obtained from the Human Research Tissue Bank, supported by the NIHR Cambridge Biomedical Research Centre



Western blot - HRP Anti-CD21 antibody [EP3093] (ab202354)

HRP Anti-CD21 antibody [EP3093] (ab202354) at 1/5000 dilution + Raji (Human Burkitt's lymphoma cell line) Whole Cell Lysate at 10 µg

Developed using the ECL technique.

Performed under reducing conditions.

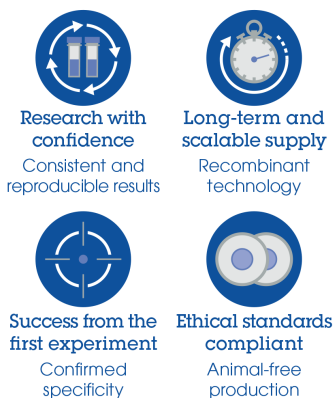
**Predicted band size:** 113 kDa

**Observed band size:** 155 kDa

**Exposure time:** 8 minutes

This blot was produced using a 3-8% Tris Acetate gel under the TA buffer system. The gel was run at 150V for 60 minutes before being transferred onto a Nitrocellulose membrane at 30V for 70 minutes. The membrane was then blocked for an hour using 3% milk before being incubated with ab202354 overnight at 4°C. Antibody binding was visualised using ECL development solution [ab133406](#).

#### Why choose a recombinant antibody?



HRP Anti-CD21 antibody [EP3093] (ab202354)

**Please note:** All products are "FOR RESEARCH USE ONLY. NOT FOR USE IN DIAGNOSTIC PROCEDURES"

#### Our Abpromise to you: Quality guaranteed and expert technical support

- Replacement or refund for products not performing as stated on the datasheet
- Valid for 12 months from date of delivery
- Response to your inquiry within 24 hours

- We provide support in Chinese, English, French, German, Japanese and Spanish
- Extensive multi-media technical resources to help you
- We investigate all quality concerns to ensure our products perform to the highest standards

If the product does not perform as described on this datasheet, we will offer a refund or replacement. For full details of the Abpromise, please visit <https://www.abcam.cn/abpromise> or contact our technical team.

#### **Terms and conditions**

---

- Guarantee only valid for products bought direct from Abcam or one of our authorized distributors