

HRP Anti-beta III Tubulin antibody [EP1569Y] - Neuronal Marker ab190574

敲除验证 重组 RabMAb

4 图像

概述

产品名称	HRP Anti-beta III Tubulin抗体[EP1569Y] - Neuronal Marker
描述	HRP兔单克隆抗体[EP1569Y] to beta III Tubulin - Neuronal Marker
宿主	Rabbit
偶联物	HRP
经测试应用	适用于: WB
种属反应性	与反应: Mouse, Rat, Human
免疫原	Synthetic peptide. This information is proprietary to Abcam and/or its suppliers.
阳性对照	WB: HeLa and PC12 whole cell lysates. Mouse brain, mouse spinal cord, rat brain and rat spinal cord tissue lysates.
常规说明	Our RabMAb [®] technology is a patented hybridoma-based technology for making rabbit monoclonal antibodies. For details on our patents, please refer to RabMAb[®] patents .

性能

形式	Liquid
存放说明	Shipped at 4°C. Store at +4°C short term (1-2 weeks). Upon delivery aliquot. Store at -20°C. Avoid freeze / thaw cycle. Store In the Dark.
存储溶液	pH: 7.40 Preservative: 0.1% Proclin 300 Solution Constituents: 30% Glycerol (glycerin, glycerine), 1% BSA, PBS
纯度	Protein A purified
克隆	单克隆
克隆编号	EP1569Y
同种型	IgG

应用

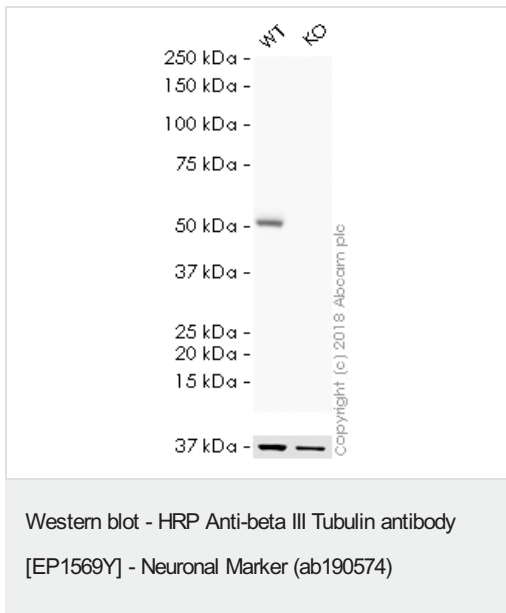
“应用说明”部分 下显示的仅为推荐的起始稀释度;实际最佳的稀释度/浓度应由使用者检定。

应用	Ab评论	说明
WB		1/3000 - 1/10000. Detects a band of approximately 52 kDa (predicted molecular weight: 50 kDa).

靶标

功能	Tubulin is the major constituent of microtubules. It binds two moles of GTP, one at an exchangeable site on the beta chain and one at a non-exchangeable site on the alpha-chain. TUBB3 plays a critical role in proper axon guidance and maintenance.
组织特异性	Expression is primarily restricted to central and peripheral nervous system.
疾病相关	Defects in TUBB3 are the cause of congenital fibrosis of extraocular muscles type 3A (CFEOM3A) [MIM:600638]. A congenital ocular motility disorder marked by restrictive ophthalmoplegia affecting extraocular muscles innervated by the oculomotor and/or trochlear nerves. It is clinically characterized by anchoring of the eyes in downward gaze, ptosis, and backward tilt of the head. Congenital fibrosis of extraocular muscles type 3 presents as a non-progressive, autosomal dominant disorder with variable expression. Patients may be bilaterally or unilaterally affected, and their oculo-motility defects range from complete ophthalmoplegia (with the eyes fixed in a hypo- and exotropic position), to mild asymptomatic restrictions of ocular movement. Ptosis, refractive error, amblyopia, and compensatory head positions are associated with the more severe forms of the disorder. In some cases the ocular phenotype is accompanied by additional features including developmental delay, corpus callosum agenesis, basal ganglia dysmorphism, facial weakness, polyneuropathy.
序列相似性	Belongs to the tubulin family.
结构域	The highly acidic C-terminal region may bind cations such as calcium.
翻译后修饰	Some glutamate residues at the C-terminus are polyglutamylated. This modification occurs exclusively on glutamate residues and results in polyglutamate chains on the gamma-carboxyl group. Also monoglycylated but not polyglycylated due to the absence of functional TTL10 in human. Monoglycylation is mainly limited to tubulin incorporated into axonemes (cilia and flagella) whereas glutamylation is prevalent in neuronal cells, centrioles, axonemes, and the mitotic spindle. Both modifications can coexist on the same protein on adjacent residues, and lowering glycylation levels increases polyglutamylated, and reciprocally. The precise function of such modifications is still unclear but they regulate the assembly and dynamics of axonemal microtubules.
细胞定位	Cytoplasm > cytoskeleton.

图片



Lane 1 : HRP Anti-beta III Tubulin antibody [EP1569Y] - Neuronal Marker (ab190574) at 20 µg

Lane 2 : HRP Anti-beta III Tubulin antibody [EP1569Y] - Neuronal Marker (ab190574) at 1/5000 dilution

Lane 1 : Wild-type HAP1 whole cell lysate

Lane 2 : TUBB3 (beta III Tubulin) knockout HAP1 whole cell lysate

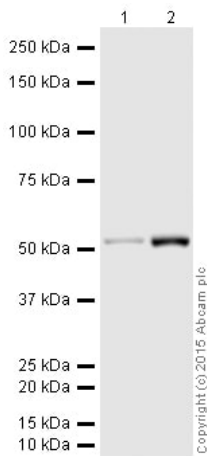
Lysates/proteins at 20 µg per lane.

Predicted band size: 50 kDa

Observed band size: 50 kDa

Exposure time: 2 minutes

ab190574 was shown to specifically react with beta III Tubulin in wild-type HAP1 cells as signal was lost in TUBB3 (beta III Tubulin) knockout cells. Wild-type and TUBB3 (beta III Tubulin) knockout samples were subjected to SDS-PAGE. Ab190574 and **ab184095** (Mouse monoclonal [mAbcam 9484] to GAPDH - Loading Control (Alexa Fluor® 680) loading control) were incubated overnight at 4°C at 1/5000 dilution and 1/1000 dilution respectively. The loading control was imaged using the Licor Odyssey CLx prior to blots being developed with ECL technique.



Western blot - HRP Anti-beta III Tubulin antibody [EP1569Y] - Neuronal Marker (ab190574)

All lanes : HRP Anti-beta III Tubulin antibody [EP1569Y] - Neuronal Marker (ab190574) at 1/3000 dilution

Lane 1 : HeLa whole cell lysate ([ab150035](#))

Lane 2 : PC12 (Rat adrenal pheochromocytoma cell line) Whole Cell Lysate

Lysates/proteins at 20 µg per lane.

Developed using the ECL technique.

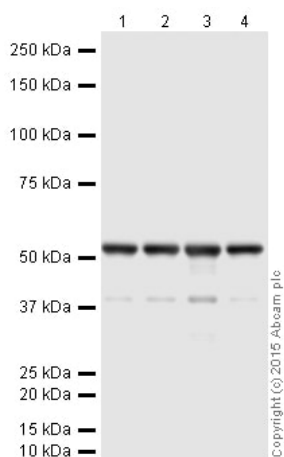
Performed under reducing conditions.

Predicted band size: 50 kDa

Observed band size: 52 kDa

Exposure time: 1 second

This blot was produced using a 4-12% Bis-tris gel under the MOPS buffer system. The gel was run at 200V for 50 minutes before being transferred onto a Nitrocellulose membrane at 30V for 70 minutes. The membrane was then blocked for an hour using 3% milk before being incubated with ab190574 overnight at 4°C. Antibody binding was visualised using ECL development solution [ab133406](#).



Western blot - HRP Anti-beta III Tubulin antibody [EP1569Y] - Neuronal Marker (ab190574)

All lanes : HRP Anti-beta III Tubulin antibody [EP1569Y] - Neuronal Marker (ab190574) at 1/10000 dilution

Lane 1 : Brain (Mouse) Tissue Lysate

Lane 2 : Spinal Cord (Mouse) Tissue Lysate

Lane 3 : Brain (Rat) Tissue Lysate

Lane 4 : Spinal Cord (Rat) Tissue Lysate

Lysates/proteins at 10 µg per lane.

Developed using the ECL technique.

Performed under reducing conditions.

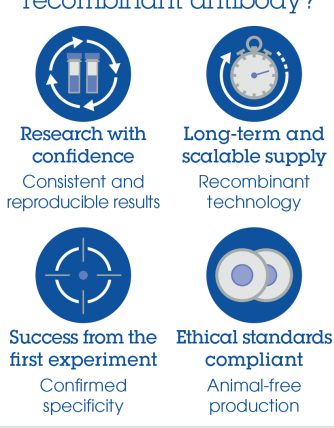
Predicted band size: 50 kDa

Observed band size: 52 kDa

Exposure time: 1 second

This blot was produced using a 4-12% Bis-tris gel under the MOPS buffer system. The gel was run at 200V for 50 minutes before being transferred onto a Nitrocellulose membrane at 30V for 70 minutes. The membrane was then blocked for an hour using 3% milk before being incubated with ab190574 overnight at 4°C. Antibody binding was visualised using ECL development solution **ab133406**.

Why choose a recombinant antibody?



- Research with confidence**
Consistent and reproducible results
- Long-term and scalable supply**
Recombinant technology
- Success from the first experiment**
Confirmed specificity
- Ethical standards compliant**
Animal-free production

HRP Anti-beta III Tubulin antibody [EP1569Y] - Neuronal Marker (ab190574)

Please note: All products are "FOR RESEARCH USE ONLY. NOT FOR USE IN DIAGNOSTIC PROCEDURES"

Our Abpromise to you: Quality guaranteed and expert technical support

- Replacement or refund for products not performing as stated on the datasheet
- Valid for 12 months from date of delivery
- Response to your inquiry within 24 hours
- We provide support in Chinese, English, French, German, Japanese and Spanish
- Extensive multi-media technical resources to help you
- We investigate all quality concerns to ensure our products perform to the highest standards

If the product does not perform as described on this datasheet, we will offer a refund or replacement. For full details of the Abpromise, please visit <https://www.abcam.cn/abpromise> or contact our technical team.

Terms and conditions

- Guarantee only valid for products bought direct from Abcam or one of our authorized distributors