


# HRP Anti-alpha Tubulin antibody [DM1A] - Loading Control ab40742

★★★★★ [5 Abreviews](#) [63 References](#) [2 图像](#)

### 概述

产品名称	HRP Anti-alpha Tubulin抗体[DM1A] - Loading Control
描述	HRP小鼠单克隆抗体[DM1A] to alpha Tubulin - Loading Control
宿主	Mouse
偶联物	HRP
经测试应用	<b>适用于:</b> WB, IHC-P
种属反应性	<b>与反应:</b> Mouse, Rat, Human, Xenopus laevis <b>预测可用于:</b> Guinea pig 
免疫原	Full length native protein (purified) corresponding to Chicken alpha Tubulin.
阳性对照	This antibody gave a positive signal in the following: HeLa (Human epithelial carcinoma cell line) Whole Cell Lysate NIH 3T3 (Mouse embryonic fibroblast cell line) Whole Cell Lysate Brain (Rat) Tissue Lysate - normal tissue Xenopus (Blastula) Whole Cell Lysate. IHC-P: FFPE human colon (normal) tissue sections.
常规说明	<p>The Life Science industry has been in the grips of a reproducibility crisis for a number of years. Abcam is leading the way in addressing this with our range of recombinant monoclonal antibodies and knockout edited cell lines for gold-standard validation. Please check that this product meets your needs before purchasing.</p> <p>If you have any questions, special requirements or concerns, please send us an inquiry and/or contact our Support team ahead of purchase. Recommended alternatives for this product can be found below, along with publications, customer reviews and Q&amp;As</p>

### 性能

形式	Liquid
存放说明	Shipped at 4°C. Store at +4°C short term (1-2 weeks). Upon delivery aliquot. Store at -20°C. Avoid freeze / thaw cycle. Store In the Dark.
存储溶液	Preservative: 0.1% 10% Proclin 300 Solution Constituents: 1% BSA, 30% Glycerol (glycerin, glycerine), PBS
纯度	IgG fraction
克隆	单克隆

克隆编号	DM1A
同种型	IgG

应用

**The Abpromise guarantee**      **Abpromise™**承诺保证使用ab40742于以下的经测试应用

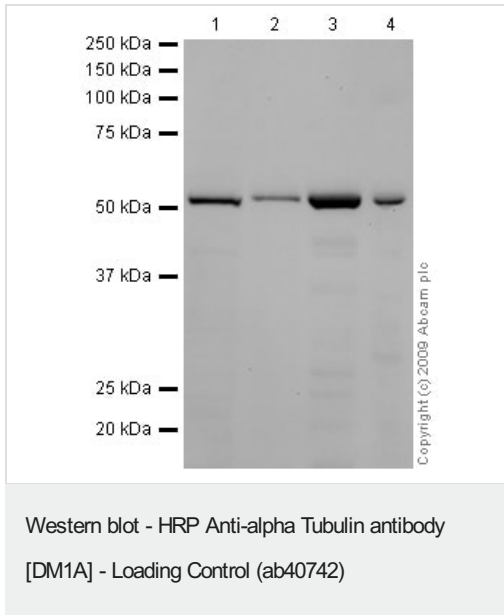
“应用说明”部分 下显示的仅为推荐的起始稀释度;实际最佳的稀释度/浓度应由使用者检定。

应用	Ab评论	说明
WB	★★★★★ (5)	1/5000. Detects a band of approximately 57 kDa (predicted molecular weight: 50 kDa).
IHC-P		1/100. Perform heat mediated antigen retrieval with citrate buffer pH 6 before commencing with IHC staining protocol.

靶标

功能	Tubulin is the major constituent of microtubules. It binds two moles of GTP, one at an exchangeable site on the beta chain and one at a non-exchangeable site on the alpha chain.
序列相似性	Belongs to the tubulin family.
翻译后修饰	Some glutamate residues at the C-terminus are polyglutamylated. This modification occurs exclusively on glutamate residues and results in polyglutamate chains on the gamma-carboxyl group. Also monoglycylated but not polyglycylated due to the absence of functional TTL10 in human. Monoglycylation is mainly limited to tubulin incorporated into axonemes (cilia and flagella) whereas glutamylation is prevalent in neuronal cells, centrioles, axonemes, and the mitotic spindle. Both modifications can coexist on the same protein on adjacent residues, and lowering glycylation levels increases polyglutamylated, and reciprocally. The precise function of such modifications is still unclear but they regulate the assembly and dynamics of axonemal microtubules.  Acetylation of alpha chains at Lys-40 stabilizes microtubules and affects affinity and processivity of microtubule motors. This modification has a role in multiple cellular functions, ranging from cell motility, cell cycle progression or cell differentiation to intracellular trafficking and signaling.
细胞定位	Cytoplasm > cytoskeleton.

图片



**All lanes :** HRP Anti-alpha Tubulin antibody [DM1A] - Loading Control (ab40742) at 1/5000 dilution

**Lane 1 :** HeLa (Human epithelial carcinoma cell line) Whole Cell Lysate

**Lane 2 :** NIH/3T3 whole cell lysate ([ab7179](#))

**Lane 3 :** Brain (Rat) Tissue Lysate

**Lane 4 :** Xenopus Laevis Protein Extracts (Stg 8)

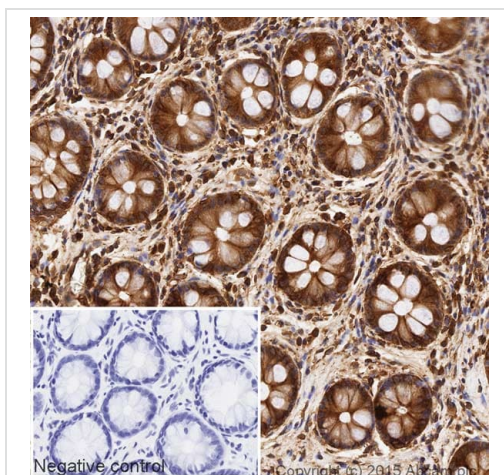
Lysates/proteins at 10 µg per lane.

Performed under reducing conditions.

**Predicted band size:** 50 kDa

**Observed band size:** 57 kDa

**Exposure time:** 2 minutes



Immunohistochemistry (Formalin/PFA-fixed paraffin-embedded sections) - HRP Anti-alpha Tubulin antibody [DM1A] - Loading Control (ab40742)

IHC image of alpha Tubulin staining in a section of formalin-fixed paraffin-embedded normal human colon tissue\*, performed on a Leica BOND™. The section was pre-treated using heat mediated antigen retrieval with sodium citrate buffer (pH6, epitope retrieval solution 1) for 20mins. The section was then incubated with ab40742, 1/100 dilution, for 15 mins at room temperature. DAB was used as the chromogen. The section was then counterstained with haematoxylin and mounted with DPX. The inset negative control image is taken from an identical assay without primary antibody.

For other IHC staining systems (automated and non-automated) customers should optimize variable parameters such as antigen retrieval conditions, primary antibody concentration and antibody incubation times.

\*Tissue obtained from the Human Research Tissue Bank, supported by the NIHR Cambridge Biomedical Research Centre

**Please note:** All products are "FOR RESEARCH USE ONLY. NOT FOR USE IN DIAGNOSTIC PROCEDURES"

### **Our Abpromise to you: Quality guaranteed and expert technical support**

---

- Replacement or refund for products not performing as stated on the datasheet
- Valid for 12 months from date of delivery
- Response to your inquiry within 24 hours
- We provide support in Chinese, English, French, German, Japanese and Spanish
- Extensive multi-media technical resources to help you
- We investigate all quality concerns to ensure our products perform to the highest standards

If the product does not perform as described on this datasheet, we will offer a refund or replacement. For full details of the Abpromise, please visit <https://www.abcam.cn/abpromise> or contact our technical team.

### **Terms and conditions**

---

- Guarantee only valid for products bought direct from Abcam or one of our authorized distributors