

Anti-HRH1/H1R antibody ab75236

[1 References](#) [2 图像](#)

概述

产品名称	Anti-HRH1/H1R抗体
描述	兔多克隆抗体to HRH1/H1R
宿主	Rabbit
经测试应用	适用于: WB, ICC/IF
种属反应性	与反应: Human
免疫原	Synthetic peptide. This information is proprietary to Abcam and/or its suppliers.
阳性对照	COLO205 cell extracts. LOVO cells.
常规说明	<p>The Life Science industry has been in the grips of a reproducibility crisis for a number of years. Abcam is leading the way in addressing this with our range of recombinant monoclonal antibodies and knockout edited cell lines for gold-standard validation. Please check that this product meets your needs before purchasing.</p> <p>If you have any questions, special requirements or concerns, please send us an inquiry and/or contact our Support team ahead of purchase. Recommended alternatives for this product can be found below, along with publications, customer reviews and Q&As</p>

性能

形式	Liquid
存放说明	Shipped at 4°C. Store at -20°C. Stable for 12 months at -20°C.
存储溶液	<p>pH: 7.40</p> <p>Preservative: 0.02% Sodium azide</p> <p>Constituents: 50% Glycerol (glycerin, glycerine), 0.87% Sodium chloride, PBS</p> <p>Without Mg2+ and Ca2+</p>
纯度	Immunogen affinity purified
克隆	多克隆
同种型	IgG

应用

The Abpromise guarantee

Abpromise™承诺保证使用ab75236于以下的经测试应用

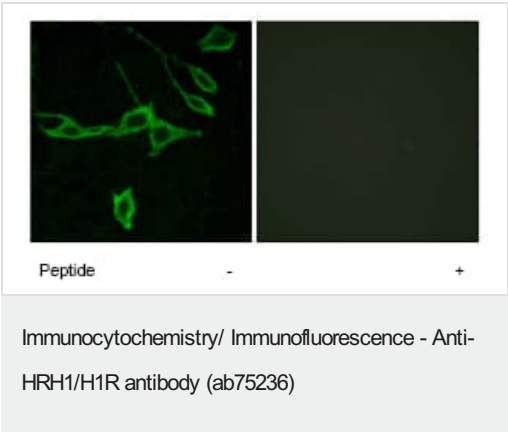
“应用说明”部分 下显示的仅为推荐的起始稀释度;实际最佳的稀释度/浓度应由使用者检定。

应用	Ab评论	说明
WB		1/500 - 1/1000. Detects a band of approximately 56 kDa (predicted molecular weight: 56 kDa).
ICC/IF		1/500 - 1/1000.

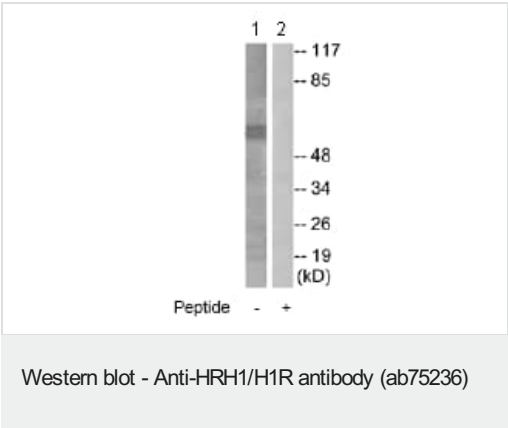
靶标

功能	In peripheral tissues, the H1 subclass of histamine receptors mediates the contraction of smooth muscles, increase in capillary permeability due to contraction of terminal venules, and catecholamine release from adrenal medulla, as well as mediating neurotransmission in the central nervous system.
序列相似性	Belongs to the G-protein coupled receptor 1 family.
翻译后修饰	Potential sites of phosphorylation in the third cytoplasmic loop may play an important role in regulating signal transduction through the receptor molecule.
细胞定位	Cell membrane.

图片



ab75236 at 1/500 dilution staining HRH1/H1R in LOVO cells by Immunofluorescence, in the absence or presence of the immunising peptide.



All lanes : Anti-HRH1/H1R antibody (ab75236) at 1/500 dilution

Lane 1 : COLO205 cell extracts

Lane 2 : COLO205 cell extracts with immunising peptide at 10 µg

Lysates/proteins at 30 µg per lane.

Predicted band size: 56 kDa

Observed band size: 56 kDa

Please note: All products are "FOR RESEARCH USE ONLY. NOT FOR USE IN DIAGNOSTIC PROCEDURES"

Our Abpromise to you: Quality guaranteed and expert technical support

- Replacement or refund for products not performing as stated on the datasheet
- Valid for 12 months from date of delivery
- Response to your inquiry within 24 hours

- We provide support in Chinese, English, French, German, Japanese and Spanish
- Extensive multi-media technical resources to help you
- We investigate all quality concerns to ensure our products perform to the highest standards

If the product does not perform as described on this datasheet, we will offer a refund or replacement. For full details of the Abpromise, please visit <https://www.abcam.cn/abpromise> or contact our technical team.

Terms and conditions

- Guarantee only valid for products bought direct from Abcam or one of our authorized distributors