


Anti-Hormone sensitive lipase/HSL (phospho S855) antibody [EPR2330] ab76492

重组 RabMAb

1 References 2 图像

概述

产品名称	Anti-Hormone sensitive lipase/HSL (phospho S855)抗体[EPR2330]
描述	兔单克隆抗体[EPR2330] to Hormone sensitive lipase/HSL (phospho S855)
宿主	Rabbit
特异性	Detects HSL/LIPE only when phosphorylated on Serine 855
经测试应用	适用于: WB 不适用于: ICC/IF, IHC-P or IP
种属反应性	与反应: Human 预测可用于: Mouse 
免疫原	Synthetic peptide. This information is proprietary to Abcam and/or its suppliers.
阳性对照	Human skeletal muscle lysate
常规说明	<p>This product is a recombinant monoclonal antibody, which offers several advantages including:</p> <ul style="list-style-type: none"> - High batch-to-batch consistency and reproducibility - Improved sensitivity and specificity - Long-term security of supply - Animal-free production <p>For more information see here.</p> <p>Our RabMAb[®] technology is a patented hybridoma-based technology for making rabbit monoclonal antibodies. For details on our patents, please refer to RabMAb[®] patents.</p> <p>Rat: We have preliminary internal testing data to indicate this antibody may not react with this species. Please contact us for more information.</p>

性能

形式	Liquid
存放说明	Shipped at 4°C. Upon delivery aliquot and store at -20°C. Avoid freeze / thaw cycles.
存储溶液	pH: 7.20 Preservative: 0.01% Sodium azide Constituents: 9% PBS, 40% Glycerol (glycerin, glycerine), 0.05% BSA, 50% Tissue culture

	supernatant
纯度	Protein A purified
克隆	单克隆
克隆编号	EPR2330
同种型	IgG

应用

The Abpromise guarantee **Abpromise™**承诺保证使用ab76492于以下的经测试应用

“应用说明”部分 下显示的仅为推荐的起始稀释度;实际最佳的稀释度/浓度应由使用者检定。

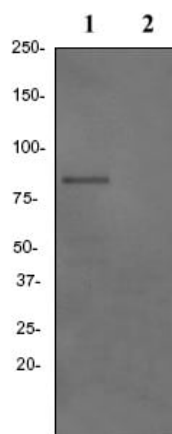
应用	Ab评论	说明
WB		1/1000 - 1/5000. Predicted molecular weight: 117 , 83 kDa. Predicted molecular weight: 117 kDa (isoform 1) or 83 kDa (isoform 2).

应用说明 Is unsuitable for ICC/IF,IHC-P or IP.

靶标

功能	In adipose tissue and heart, it primarily hydrolyzes stored triglycerides to free fatty acids, while in steroidogenic tissues, it principally converts cholesteryl esters to free cholesterol for steroid hormone production.
通路	Glycerolipid metabolism; triacylglycerol degradation.
序列相似性	Belongs to the 'GDXG' lipolytic enzyme family.
细胞定位	Cell membrane. Membrane > caveola. Cytoplasm > cytosol. Found in the high-density caveolae. Translocates to the cytoplasm from the caveolae upon insulin stimulation.

图片



Western blot - Anti-Hormone sensitive lipase/HSL (phospho S855) antibody [EPR2330] (ab76492)

All lanes : Anti-Hormone sensitive lipase/HSL (phospho S855) antibody [EPR2330] (ab76492) at 1/5000 dilution

Lane 1 : Human skeletal muscle lysate, untreated

Lane 2 : Human skeletal muscle lysate, treated with LP

Lysates/proteins at 10 µg per lane.

Secondary

All lanes : HRP labeled goat anti-rabbit at 1/1000 dilution

Predicted band size: 117 , 83 kDa

Observed band size: 83 kDa

Why choose a recombinant antibody?



Research with confidence
Consistent and reproducible results



Long-term and scalable supply
Recombinant technology



Success from the first experiment
Confirmed specificity



Ethical standards compliant
Animal-free production

Anti-Hormone sensitive lipase/HSL (phospho S855) antibody [EPR2330] (ab76492)

Please note: All products are "FOR RESEARCH USE ONLY. NOT FOR USE IN DIAGNOSTIC PROCEDURES"

Our Abpromise to you: Quality guaranteed and expert technical support

- Replacement or refund for products not performing as stated on the datasheet
- Valid for 12 months from date of delivery
- Response to your inquiry within 24 hours
- We provide support in Chinese, English, French, German, Japanese and Spanish
- Extensive multi-media technical resources to help you
- We investigate all quality concerns to ensure our products perform to the highest standards

If the product does not perform as described on this datasheet, we will offer a refund or replacement. For full details of the Abpromise, please visit <https://www.abcam.cn/abpromise> or contact our technical team.

Terms and conditions

- Guarantee only valid for products bought direct from Abcam or one of our authorized distributors