


Anti-HOOK2 antibody ab89696

1 图像

概述

产品名称	Anti-HOOK2抗体
描述	兔多克隆抗体to HOOK2
宿主	Rabbit
经测试应用	适用于: WB
种属反应性	与反应: Human 预测可用于: Mouse, Rat 
免疫原	Synthetic peptide corresponding to Mouse HOOK2 aa 700 to the C-terminus (C terminal) conjugated to keyhole limpet haemocyanin. (Peptide available as ab101733)
阳性对照	This antibody gave a positive signal in human brain tissue lysate.
常规说明	<p>The Life Science industry has been in the grips of a reproducibility crisis for a number of years. Abcam is leading the way in addressing this with our range of recombinant monoclonal antibodies and knockout edited cell lines for gold-standard validation. Please check that this product meets your needs before purchasing.</p> <p>If you have any questions, special requirements or concerns, please send us an inquiry and/or contact our Support team ahead of purchase. Recommended alternatives for this product can be found below, along with publications, customer reviews and Q&As</p>

性能

形式	Liquid
存放说明	Shipped at 4°C. Store at +4°C short term (1-2 weeks). Upon delivery aliquot. Store at -20°C or -80°C. Avoid freeze / thaw cycle.
存储溶液	pH: 7.40 Preservative: 0.02% Sodium azide Constituent: PBS
纯度	Batches of this product that have a concentration < 1mg/ml may have BSA added as a stabilising agent. If you would like information about the formulation of a specific lot, please contact our scientific support team who will be happy to help. Immunogen affinity purified

克隆

多克隆

同种型

IgG

应用

The Abpromise guarantee **Abpromise™**承诺保证使用ab89696于以下的经测试应用

“应用说明”部分 下显示的仅为推荐的起始稀释度;实际最佳的稀释度/浓度应由使用者检定。

应用	Ab评论	说明
WB		Use a concentration of 1 µg/ml. Detects a band of approximately 83 kDa (predicted molecular weight: 83 kDa).

靶标

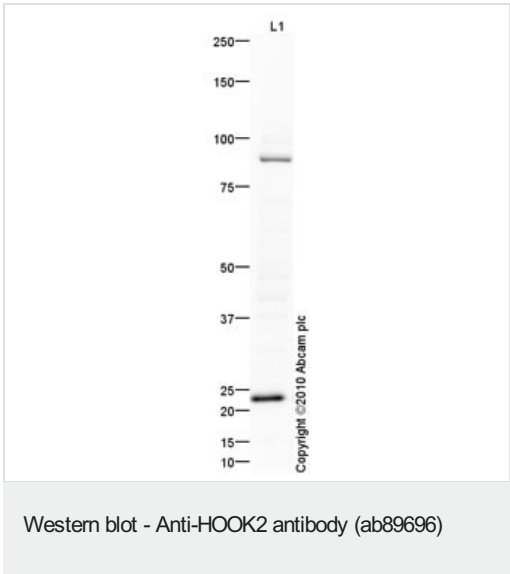
相关性

HOOK2 is a member of the Hook protein family. Hook proteins are cytosolic coiled-coil proteins that contain conserved N-terminal domains, which attach to microtubules, and more divergent C-terminal domains, which mediate binding to organelles. HOOK2 localizes to the centrosome through all phases of the cell cycle. Interference with HOOK2 function results in the loss of the radial organization of microtubules suggesting that HOOK2 contributes to the establishment and maintenance of centrosomal structure and function. HOOK2 may contribute to the establishment and maintenance of the pericentrosomal localization of aggresomes by promoting the microtubule-based delivery of protein aggregates to pericentriolar aggresomes.

细胞定位

Cytoplasmic. Note=Associates with discrete punctate structure that correspond to neither early or late endosomes, lysosomes, multivesicular bodies (MVBs), Golgi complex, endoplasmic reticulum, nor mitochondria.

图片



Anti-HOOK2 antibody (ab89696) at 1 µg/ml + Human brain tissue lysate - total protein (**ab29466**) at 10 µg

Secondary

Goat Anti-Rabbit IgG H&L (HRP) preadsorbed (**ab97080**) at 1/5000 dilution

Developed using the ECL technique.

Performed under reducing conditions.

Predicted band size: 83 kDa

Observed band size: 83 kDa

Additional bands at: 23 kDa. We are unsure as to the identity of these extra bands.

Exposure time: 20 minutes

Please note: All products are "FOR RESEARCH USE ONLY. NOT FOR USE IN DIAGNOSTIC PROCEDURES"

Our Abpromise to you: Quality guaranteed and expert technical support

- Replacement or refund for products not performing as stated on the datasheet
- Valid for 12 months from date of delivery
- Response to your inquiry within 24 hours
- We provide support in Chinese, English, French, German, Japanese and Spanish
- Extensive multi-media technical resources to help you
- We investigate all quality concerns to ensure our products perform to the highest standards

If the product does not perform as described on this datasheet, we will offer a refund or replacement. For full details of the Abpromise, please visit <https://www.abcam.cn/abpromise> or contact our technical team.

Terms and conditions

- Guarantee only valid for products bought direct from Abcam or one of our authorized distributors