

Anti-HO-2 antibody ab90515

★★★★★ [3 Abreviews](#) [5 References](#) [2 图像](#)

概述

产品名称	Anti-HO-2抗体
描述	兔多克隆抗体to HO-2
宿主	Rabbit
经测试应用	适用于: WB, ICC/IF, IHC-P, IP, ELISA
种属反应性	与反应: Mouse, Rat, Hamster, Dog, Human, Pig, Monkey
免疫原	Synthetic peptide corresponding to Human HO-2 (N terminal).
常规说明	<p>The Life Science industry has been in the grips of a reproducibility crisis for a number of years. Abcam is leading the way in addressing this with our range of recombinant monoclonal antibodies and knockout edited cell lines for gold-standard validation. Please check that this product meets your needs before purchasing.</p> <p>If you have any questions, special requirements or concerns, please send us an inquiry and/or contact our Support team ahead of purchase. Recommended alternatives for this product can be found below, along with publications, customer reviews and Q&As</p>

性能

形式	Liquid
存放说明	Shipped at 4°C. Upon delivery aliquot and store at -20°C. Avoid repeated freeze / thaw cycles.
存储溶液	Preservative: 0.09% Sodium azide Constituents: PBS, 50% Glycerol (glycerin, glycerine)
纯度	Protein A purified
克隆	多克隆
同种型	IgG

应用

The Abpromise guarantee **Abpromise™**承诺保证使用ab90515于以下的经测试应用

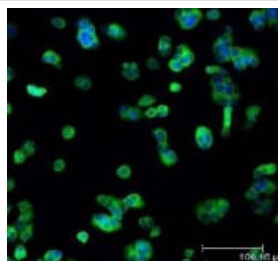
“应用说明”部分 下显示的仅为推荐的起始稀释度;实际最佳的稀释度/浓度应由使用者检定。

应用	Ab评论	说明
WB	★★★★★ (3)	1/1000. Predicted molecular weight: 36 kDa.
ICC/IF		Use at an assay dependent concentration.
IHC-P		Use at an assay dependent concentration.
IP		Use at an assay dependent concentration.
ELISA		Use at an assay dependent concentration.

靶标

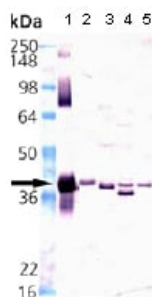
功能	Heme oxygenase cleaves the heme ring at the alpha methene bridge to form biliverdin. Biliverdin is subsequently converted to bilirubin by biliverdin reductase. Under physiological conditions, the activity of heme oxygenase is highest in the spleen, where senescent erythrocytes are sequestered and destroyed. Heme oxygenase 2 could be implicated in the production of carbon monoxide in brain where it could act as a neurotransmitter.
序列相似性	Belongs to the heme oxygenase family. Contains 2 HRM (heme regulatory motif) repeats.
细胞定位	Microsome. Endoplasmic reticulum.

图片



ab90515 staining HO-2 in MCF7 cells by Immunofluorescence (green). Nuclei are stained in blue pseudocolor using DRAQ5.

Immunocytochemistry/ Immunofluorescence - Anti-HO-2 antibody (ab90515)



All lanes : Anti-HO-2 antibody (ab90515) at 1/1000 dilution

Lane 1 : HO-2 Recombinant Human Protein

Lane 2 : Human Liver Microsome Extract

Lane 3 : Mouse Liver Microsome Extract

Lane 4 : Rat Liver Microsome Extract

Lane 5 : Dog Liver Microsome Extract

Western blot - Anti-HO-2 antibody (ab90515)

Predicted band size: 36 kDa

Please note: All products are "FOR RESEARCH USE ONLY. NOT FOR USE IN DIAGNOSTIC PROCEDURES"

Our Abpromise to you: Quality guaranteed and expert technical support

- Replacement or refund for products not performing as stated on the datasheet
- Valid for 12 months from date of delivery
- Response to your inquiry within 24 hours

- We provide support in Chinese, English, French, German, Japanese and Spanish
- Extensive multi-media technical resources to help you
- We investigate all quality concerns to ensure our products perform to the highest standards

If the product does not perform as described on this datasheet, we will offer a refund or replacement. For full details of the Abpromise, please visit <https://www.abcam.cn/abpromise> or contact our technical team.

Terms and conditions

- Guarantee only valid for products bought direct from Abcam or one of our authorized distributors