

Anti-HLA G antibody [G233] ab52454

★★★★★ [1 Abreviews](#) [7 References](#) [2 图像](#)

概述

产品名称	Anti-HLA G抗体[G233]
描述	小鼠单克隆抗体[G233] to HLA G
宿主	Mouse
特异性	ab52454 recognises several isoforms of HLA-G expressed in all populations of extravillous trophoblast (cell columns, interstitial trophoblast, endovascular trophoblast, placental bed giant cells). It does not cross-react with any other MHC Class I antigens (HLA-A, -B, -C, -E, -F).
经测试应用	适用于: Flow Cyt, ICC/IF
种属反应性	与反应: Human
免疫原	Tissue, cells or virus corresponding to Human HLA G. Murine L cells transfected with both human beta2-microglobulin and HLA-G
阳性对照	Jeg3 cell line.
常规说明	<p>The Life Science industry has been in the grips of a reproducibility crisis for a number of years. Abcam is leading the way in addressing this with our range of recombinant monoclonal antibodies and knockout edited cell lines for gold-standard validation. Please check that this product meets your needs before purchasing.</p> <p>If you have any questions, special requirements or concerns, please send us an inquiry and/or contact our Support team ahead of purchase. Recommended alternatives for this product can be found below, along with publications, customer reviews and Q&As</p>

性能

形式	Liquid
存放说明	Shipped at 4°C. Store at +4°C short term (1-2 weeks). Upon delivery aliquot. Store at -20°C or -80°C. Avoid freeze / thaw cycle.
存储溶液	<p>pH: 7.40</p> <p>Preservative: 0.097% Sodium azide</p> <p>Constituent: PBS</p>
纯度	Protein A purified
纯化说明	Purified from hybridoma culture supernatant. Purity >95% by SDS-PAGE.
克隆	单克隆

克隆编号

G233

同种型

IgG2a

应用

The Abpromise guarantee

Abpromise™承诺保证使用ab52454于以下的经测试应用

“应用说明”部分 下显示的仅为推荐的起始稀释度;实际最佳的稀释度/浓度应由使用者检定。

应用	Ab评论	说明
Flow Cyt		Use a concentration of 1 - 4 µg/ml.
ICC/IF	★★★★★ (1)	Use a concentration of 10 µg/ml.

靶标

功能

Involved in the presentation of foreign antigens to the immune system. Plays a role in maternal tolerance of the fetus by mediating protection from the deleterious effects of natural killer cells, cytotoxic T lymphocytes, macrophages and mononuclear cells.

组织特异性

Expressed in trophoblasts.

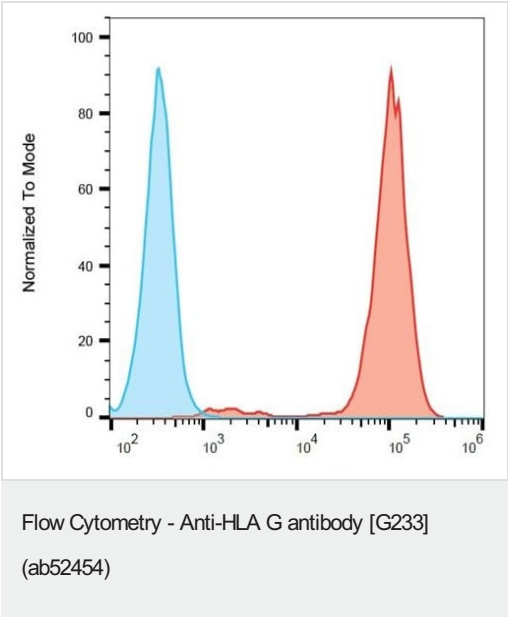
序列相似性

Belongs to the MHC class I family.
Contains 1 Ig-like C1-type (immunoglobulin-like) domain.

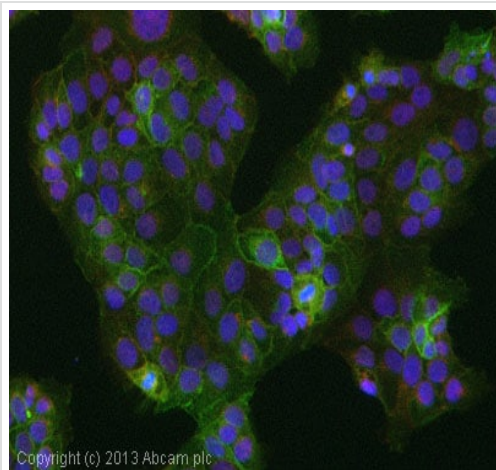
细胞定位

Membrane.

图片



Flow cytometry analysis (surface staining) of HLA-G in HLA-G transfectants using ab52454 purified / GAM-APC at 4 µg/ml. Blue - K562 cells. Red - HLA-G transfected LCL cells.



Immunocytochemistry/ Immunofluorescence - Anti-
HLA G antibody [G233] (ab52454)

ICC/IF image of ab52454 stained Jeg3 cells. The cells were 4% paraformaldehyde fixed (10 min) and then incubated in 1%BSA / 10% normal goat serum / 0.3M glycine in 0.1% PBS-Tween for 1h to permeabilise the cells and block non-specific protein-protein interactions. The cells were then incubated with the antibody (ab52454, 10µg/ml) overnight at +4°C. The secondary antibody (green) was **ab96879**, DyLight® 488 goat anti-mouse IgG (H+L) used at a 1/250 dilution for 1h. Alexa Fluor® 594 WGA was used to label plasma membranes (red) at a 1/200 dilution for 1h. DAPI was used to stain the cell nuclei (blue) at a concentration of 1.43µM.

Please note: All products are "FOR RESEARCH USE ONLY. NOT FOR USE IN DIAGNOSTIC PROCEDURES"

Our Abpromise to you: Quality guaranteed and expert technical support

- Replacement or refund for products not performing as stated on the datasheet
- Valid for 12 months from date of delivery
- Response to your inquiry within 24 hours
- We provide support in Chinese, English, French, German, Japanese and Spanish
- Extensive multi-media technical resources to help you
- We investigate all quality concerns to ensure our products perform to the highest standards

If the product does not perform as described on this datasheet, we will offer a refund or replacement. For full details of the Abpromise, please visit <https://www.abcam.cn/abpromise> or contact our technical team.

Terms and conditions

- Guarantee only valid for products bought direct from Abcam or one of our authorized distributors