

Anti-HLA Class I antibody [W6/32] ab22432

重组

★★★★★ **1 Abreviews** **32 References** **4 图像**

概述

产品名称	Anti-HLA Class I 抗体[W6/32]
描述	小鼠单克隆抗体[W6/32] to HLA Class I
宿主	Mouse
经测试应用	适用于: Flow Cyt, ICC/IF, IHC-Fr
种属反应性	与反应: Human
免疫原	Tissue, cells or virus corresponding to Human HLA Class I. Purified human tonsil lymphocyte membranes.
阳性对照	IHC-Fr: Human heart tissue. ICC/IF: HeLa cells. Flow Cyt: Jurkat cells.
常规说明	<p>This product has switched from a hybridoma to recombinant production method on 25th March 2024.</p> <p>This product is a recombinant monoclonal antibody, which offers several advantages including:</p> <ul style="list-style-type: none">- High batch-to-batch consistency and reproducibility- Improved sensitivity and specificity- Long-term security of supply- Animal-free production <p>For more information see here.</p>

性能

形式	Liquid
存放说明	Shipped at 4°C. Store at +4°C short term (1-2 weeks). Upon delivery aliquot. Store at -20°C. Avoid freeze / thaw cycle.
存储溶液	pH: 7.20 Preservative: 0.01% Sodium azide Constituents: 59% PBS, 0.05% BSA, 40% Glycerol (glycerin, glycerine)
纯度	Protein A purified
克隆	单克隆
克隆编号	W6/32
骨髓瘤	NS1/1-Ag4-1

同种型

IgG2a

应用

The Abpromise guarantee **Abpromise™**承诺保证使用ab22432于以下的经测试应用

“应用说明”部分 下显示的仅为推荐的起始稀释度;实际最佳的稀释度/浓度应由使用者检定。

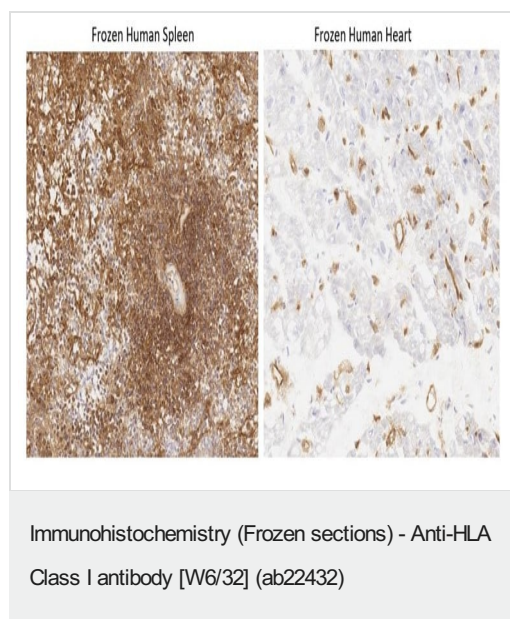
应用	Ab评论	说明
Flow Cyt		Use a concentration of 0.2 µg/ml.
ICC/IF	★★★★★ (1)	Use a concentration of 1 µg/ml.
IHC-Fr		Use a concentration of 0.05 µg/ml.

靶标

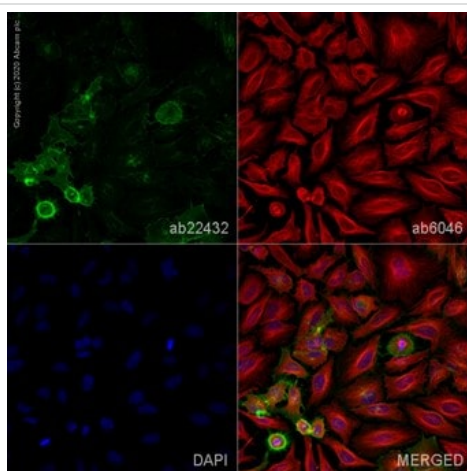
相关性 HLA Class I is involved in the presentation of foreign antigens to the immune system.

细胞定位 Plasma membrane

图片

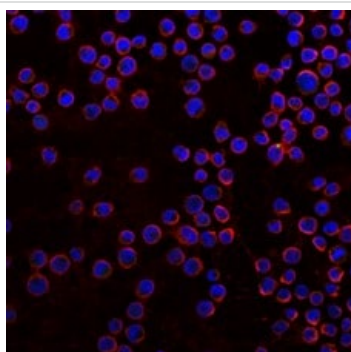


Immunohistochemical analysis of ab22432 10% paraformaldehyde fixed endothelial cells in frozen Human spleen tissue Human heart tissue labeling HLA Class I with ab22432 at 0.05µg/ml. Detected using an HRP conjugated compact polymer system. DAB was used as the chromogen. The section was then counterstained with haematoxylin and mounted with DPX.



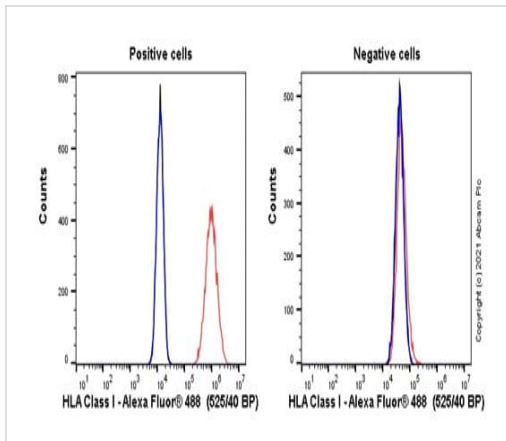
Immunocytochemistry/ Immunofluorescence - Anti-
HLA Class I antibody [W6/32] (ab22432)

Immunofluorescent analysis of 4% Paraformaldehyde-fixed, 0.1% PBS-Tween permeabilized HeLa (human cervical adenocarcinoma epithelial cell) cells labelling HLA Class I with ab22432 at 1µg/mL, blocked with 1% BSA/10% normal goat serum/0.3M glycine in 0.1%PBS-Tween for 1h. The cells were then incubated overnight at 4°C with **ab92494** at 1µg/mL and **ab6046**, Rabbit polyclonal to beta Tubulin - Loading Control. Cells were then incubated with **ab150117**, Goat polyclonal Secondary Antibody to Mouse IgG H&L (Alexa Fluor® 488) preadsorbed at 1/1000 dilution (shown in green) and **ab150080**, Goat polyclonal Secondary Antibody to Rabbit IgG - H&L (Alexa Fluor® 594) at 1/1000 dilution (shown in red). Nuclear DNA was labelled with DAPI (shown in blue). Image was acquired with a high-content analyser (Operetta CLS, Perkin Elmer) and a maximum intensity projection of confocal sections is shown.



Immunocytochemistry/ Immunofluorescence - Anti-
HLA Class I antibody [W6/32] (ab22432)

Immunofluorescent analysis of 4% Paraformaldehyde-fixed, 0.1% PBS-Tween permeabilized negative cell line K562 labelling HLA Class I with ab22432 at 1µg/mL, blocked with 1% BSA/10% normal goat serum/0.3M glycine in 0.1%PBS-Tween for 1h. The cells were then incubated overnight at 4°C with **ab227805** at 5µg/ml and **ab6046**, Rabbit polyclonal to beta Tubulin - Loading Control. Cells were then incubated with **ab150117**, Goat polyclonal Secondary Antibody to Mouse IgG H&L (Alexa Fluor® 488) preadsorbed at 1/1000 dilution (shown in green) and **ab150080**, Goat polyclonal Secondary Antibody to Rabbit IgG - H&L (Alexa Fluor® 594) at 1/1000 dilution (shown in red). Nuclear DNA was labelled with DAPI (shown in blue). Also suitable in cells fixed with 100% methanol (5 min). Image was acquired with a confocal microscope (Leica-Microsystems TCS SP8) and a single confocal section is shown.



Flow Cytometry - Anti-HLA Class I antibody [W6/32]
(ab22432)

Flow cytometry overlay histogram showing left Jurkat positive cells and right negative K562 cells stained with ab22432 (red line). The cells were incubated in 1x PBS containing 10 % normal goat serum to block non-specific protein-protein interaction followed by the antibody (ab22432) (1×10^6 in 100 μ l at 0.2 μ g/ml) for 30 min on ice. The secondary antibody Goat anti-mouse IgG H&L (Alexa Fluor® 488, pre-adsorbed) (**ab150117**) was used at for 30 min on ice. Isotype control antibody (black line) was mouse IgG2ak (**ab18413**) used at the same concentration and conditions as the primary antibody. Unlabeled sample (blue line) was also used as a control. Acquisition of >5000 events were collected using a 50 mW Blue laser (488nm) and 525/40 bandpass filter.

Please note: All products are "FOR RESEARCH USE ONLY. NOT FOR USE IN DIAGNOSTIC PROCEDURES"

Our Abpromise to you: Quality guaranteed and expert technical support

- Replacement or refund for products not performing as stated on the datasheet
- Valid for 12 months from date of delivery
- Response to your inquiry within 24 hours
- We provide support in Chinese, English, French, German, Japanese and Spanish
- Extensive multi-media technical resources to help you
- We investigate all quality concerns to ensure our products perform to the highest standards

If the product does not perform as described on this datasheet, we will offer a refund or replacement. For full details of the Abpromise, please visit <https://www.abcam.cn/abpromise> or contact our technical team.

Terms and conditions

- Guarantee only valid for products bought direct from Abcam or one of our authorized distributors