

### Anti-HLA Class 1 ABC antibody [EMR8-5] ab70328

★★★★★ [19 Abreviews](#) [141 References](#) [4 图像](#)

#### 概述

产品名称	Anti-HLA Class 1 ABC抗体[EMR8-5]
描述	小鼠单克隆抗体[EMR8-5] to HLA Class 1 ABC
宿主	Mouse
特异性	ab70328 reacts with the heavy chains of human HLA class 1 A, -B, and -C.
经测试应用	<b>适用于:</b> Flow Cyt, IHC-P, WB
种属反应性	<b>与反应:</b> Human, Recombinant fragment
免疫原	Recombinant full length protein corresponding to HLA Class 1 ABC. Recombinant HLA-A*2402 extracellular domain
阳性对照	IHC-P: Human tonsil tissue sections
常规说明	<p>The Life Science industry has been in the grips of a reproducibility crisis for a number of years. Abcam is leading the way in addressing this with our range of recombinant monoclonal antibodies and knockout edited cell lines for gold-standard validation. Please check that this product meets your needs before purchasing.</p> <p>If you have any questions, special requirements or concerns, please send us an inquiry and/or contact our Support team ahead of purchase. Recommended alternatives for this product can be found below, along with publications, customer reviews and Q&amp;As</p>

#### 性能

形式	Liquid
存放说明	Shipped at 4°C. Store at +4°C short term (1-2 weeks). Upon delivery aliquot. Store at -20°C long term.
存储溶液	<p>pH: 7.40</p> <p>Preservative: 0.05% Sodium azide</p> <p>Constituent: PBS</p>
纯度	Protein A purified
克隆	单克隆
克隆编号	EMR8-5
骨髓瘤	NS1
同种型	IgG1

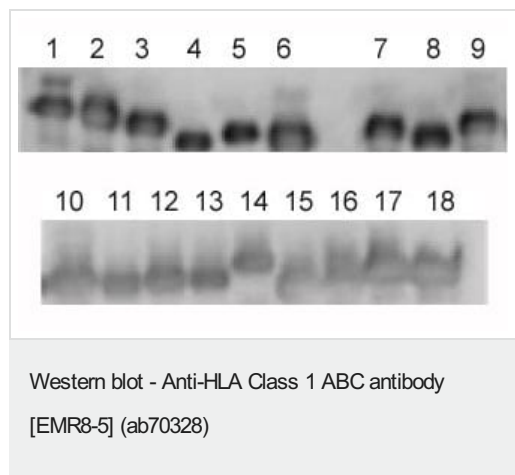
kappa

**The Abpromise guarantee**      **Abpromise™承诺保证使用ab70328于以下的经测试应用**

应用	Ab评论	说明
Flow Cyt	★★★★☆ (1)	Use 1-2µg for 10 <sup>6</sup> cells. (methanol or paraformaldehyde fixed cells) <b>ab170190</b> - Mouse monoclonal IgG1, is suitable for use as an isotype control with this antibody.
IHC-P	★★★★★ (9)	Use a concentration of 0.05 µg/ml. Perform heat mediated antigen retrieval with citrate buffer pH 6 before commencing with IHC staining protocol.
WB	★★★★★ (2)	Use at an assay dependent concentration.

相关性	HLA-ABC antigen is present on most nucleated cells of humans and Old World monkeys. HLA CClass I is involved in the presentation of foreign antigens to the immune system.
-----	--

图片



Lane 1 : A\*2402  
Lane 2 : A\*0101  
Lane 3 : A\*1101  
Lane 4 : A\*0201  
Lane 5 : A\*0207  
Lane 6 : A2402  
Lane 7 : B\*0702  
Lane 8 : B\*0801  
Lane 9 : B\*1501  
Lane 10 : B\*3501  
Lane 11 : B\*4001  
Lane 12 : B\*4002  
Lane 13 : B\*4006  
Lane 14 : B\*4403  
Lane 15 : Cw\*0102

**Lane 16 :** Cw\*0801

**Lane 17 :** Cw\*1202

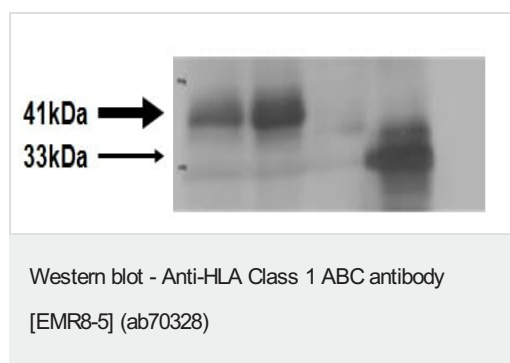
**Lane 18 :** Cw\*1502

Western blot analysis of ab70328 reactivity using recombinant HLA heavy chains.

Lanes 1-6: HLA-A

Lanes 7-14: HLA-B

Lanes 15-18: HLA-C



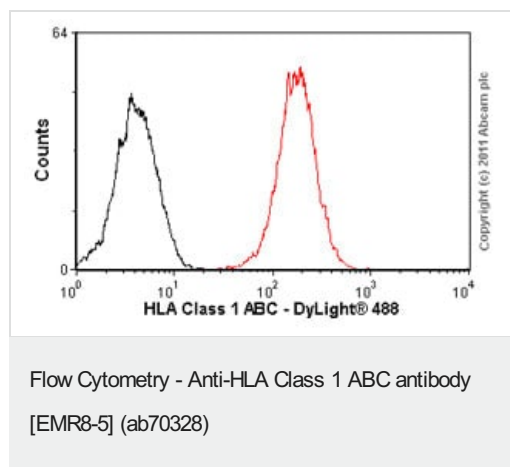
**All lanes :** Anti-HLA Class 1 ABC antibody [EMR8-5] (ab70328)

**Lane 1 :** Human oral cancer cell line OSC20

**Lane 2 :** HLA-A2402 gene transfected OSC20

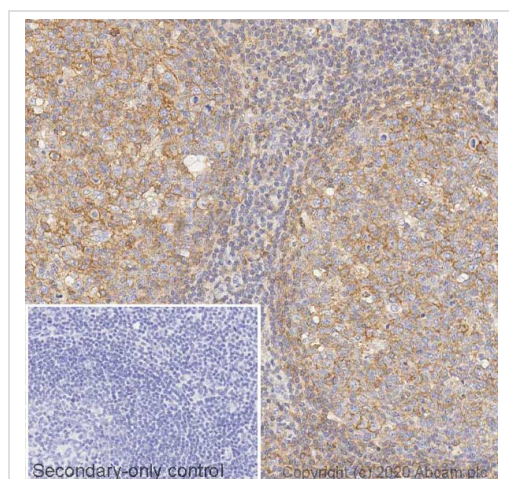
**Lane 3 :** Human Leukemia cell line K562

**Lane 4 :** Recombinant HLA-A2402 heavy chain



Overlay histogram showing Jurkat cells stained with ab70328 (red line). The cells were fixed with methanol (5 min) and incubated in 1x PBS / 10% normal goat serum / 0.3M glycine to block non-specific protein-protein interactions. The cells were then incubated with the antibody (ab70328, 1µg/1x10<sup>6</sup> cells) for 30 min at 22°C. The secondary antibody used was DyLight® 488 goat anti-mouse IgG (H+L) ([ab96879](#)) at 1/500 dilution for 30 min at 22°C. Isotype control antibody (black line) was mouse IgG1 [CIGG1] ([ab91353](#), 2µg/1x10<sup>6</sup> cells) used under the same conditions. Acquisition of >5,000 events was performed. This antibody gave a positive signal in Jurkat cells fixed with 4% paraformaldehyde (10 min) used under the same conditions.

Please note that Abcam do not have data for use of this antibody on non-fixed cells. We welcome any customer feedback.



Immunohistochemistry (Formalin/PFA-fixed paraffin-embedded sections) - Anti-HLA Class 1 ABC antibody [EMR8-5] (ab70328)

IHC image of HLA Class 1 ABC staining in a section of formalin-fixed paraffin-embedded normal human tonsil\* performed on a Leica BOND™ system using the standard protocol. The section was pre-treated using heat mediated antigen retrieval with sodium citrate buffer (pH6, epitope retrieval solution 1) for 20mins. The section was then incubated with ab70328, 0.05ug/ml, for 15 mins at room temperature and detected using an HRP conjugated compact polymer system. DAB was used as the chromogen. The section was then counterstained with haematoxylin and mounted with DPX. The inset secondary-only control image is taken from an identical assay without primary antibody.

For other IHC staining systems (automated and non-automated) customers should optimize variable parameters such as antigen retrieval conditions, primary antibody concentration and antibody incubation times.

**Please note:** All products are "FOR RESEARCH USE ONLY. NOT FOR USE IN DIAGNOSTIC PROCEDURES"

### Our Abpromise to you: Quality guaranteed and expert technical support

- Replacement or refund for products not performing as stated on the datasheet
- Valid for 12 months from date of delivery
- Response to your inquiry within 24 hours
- We provide support in Chinese, English, French, German, Japanese and Spanish
- Extensive multi-media technical resources to help you
- We investigate all quality concerns to ensure our products perform to the highest standards

If the product does not perform as described on this datasheet, we will offer a refund or replacement. For full details of the Abpromise, please visit <https://www.abcam.cn/abpromise> or contact our technical team.

### Terms and conditions

- Guarantee only valid for products bought direct from Abcam or one of our authorized distributors