

Anti-HIV1 tat antibody [1] ab42359

[11 References](#) [1 图像](#)

概述

产品名称	Anti-HIV1 tat抗体[1]
描述	小鼠单克隆抗体[1] to HIV1 tat
宿主	Mouse
特异性	This antibody reacts with the rTat consensus sequences of HIV1 subtypes A (DPVDPNLE), B (EPVDPRLE) and C (EPVDPNLE).
经测试应用	适用于: Radioimmunoprecipitation, IHC-P, ELISA, WB
种属反应性	与反应: Human immunodeficiency virus
免疫原	Recombinant fragment corresponding to HIV-1 HIV1 tat.
表位	Mapped to amino acids 2-9 (EPVDPRLE - B subtype consensus).
常规说明	Also known as clone 02-001. The Life Science industry has been in the grips of a reproducibility crisis for a number of years. Abcam is leading the way in addressing this with our range of recombinant monoclonal antibodies and knockout edited cell lines for gold-standard validation. Please check that this product meets your needs before purchasing. If you have any questions, special requirements or concerns, please send us an inquiry and/or contact our Support team ahead of purchase. Recommended alternatives for this product can be found below, along with publications, customer reviews and Q&As

性能

形式	Liquid
存放说明	Shipped at 4°C. Store at +4°C short term (1-2 weeks). Upon delivery aliquot. Store at -20°C or -80°C. Avoid freeze / thaw cycle.
存储溶液	pH: 7.40 Preservative: 0.1% Sodium azide Constituent: PBS
纯度	Protein G purified
克隆	单克隆
克隆编号	1
同种型	IgG1

应用

The Abpromise guarantee **Abpromise™** 承诺保证使用 ab42359 于以下的经测试应用

“应用说明”部分 下显示的仅为推荐的起始稀释度;实际最佳的稀释度/浓度应由使用者检定。

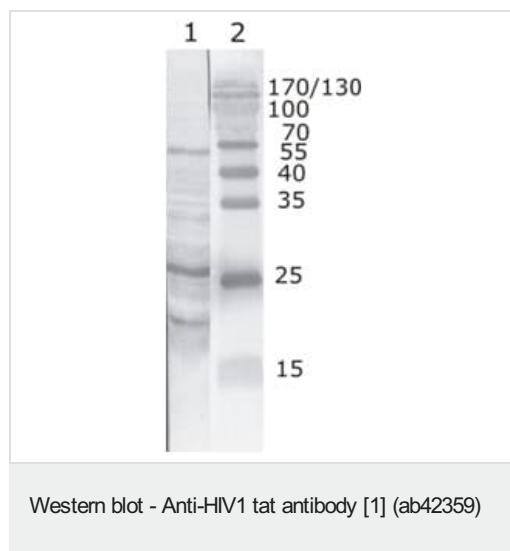
应用	Ab评论	说明
Radioimmunoprecipitation		Use at an assay dependent concentration.
IHC-P		Use at an assay dependent concentration.
ELISA		Use a concentration of 0.02 - 0.05 µg/ml.
WB		Use a concentration of 1 - 2 µg/ml.

靶标

相关性 HIV1 tat (Transactivator of Transcription) protein is a pleiotropic factor that induces a broad range of biological effects in numerous cell types. At the HIV promoter, tat is a powerful transactivator of gene expression which acts by inducing chromatin remodeling and by recruiting elongation-competent transcriptional complexes on to the viral LTR.

细胞定位 Nuclear. Upon stimulation with EDN1, it is exported from the nucleus to the perinuclear region.

图片



Lane 1 : Anti-HIV1 tat antibody [1] (ab42359)

Lane 1 : Recombinant HIV1 Tat (B subtype)

Lane 2 : Protein size marker

Please note: All products are "FOR RESEARCH USE ONLY. NOT FOR USE IN DIAGNOSTIC PROCEDURES"

Our Abpromise to you: Quality guaranteed and expert technical support

- Replacement or refund for products not performing as stated on the datasheet
- Valid for 12 months from date of delivery

- Response to your inquiry within 24 hours
- We provide support in Chinese, English, French, German, Japanese and Spanish
- Extensive multi-media technical resources to help you
- We investigate all quality concerns to ensure our products perform to the highest standards

If the product does not perform as described on this datasheet, we will offer a refund or replacement. For full details of the Abpromise, please visit <https://www.abcam.cn/abpromise> or contact our technical team.

Terms and conditions

- Guarantee only valid for products bought direct from Abcam or one of our authorized distributors