

Anti-HIV1 Reverse Transcriptase antibody ab63911

[7 References](#) [2 图像](#)

概述

产品名称	Anti-HIV1 Reverse Transcriptase 抗体
描述	兔多克隆抗体 to HIV1 Reverse Transcriptase
宿主	Rabbit
经测试应用	适用于: WB, ELISA
种属反应性	与反应: Human immunodeficiency virus
免疫原	HIV1 Reverse Transcriptase, over-expressed as recombinant protein in E.coli
阳性对照	Extract of MT4 cells infected with HIV1 (LAI strain).
常规说明	<p>The Life Science industry has been in the grips of a reproducibility crisis for a number of years. Abcam is leading the way in addressing this with our range of recombinant monoclonal antibodies and knockout edited cell lines for gold-standard validation. Please check that this product meets your needs before purchasing.</p> <p>If you have any questions, special requirements or concerns, please send us an inquiry and/or contact our Support team ahead of purchase. Recommended alternatives for this product can be found below, along with publications, customer reviews and Q&As</p>

性能

形式	Liquid
存放说明	Shipped at 4°C. Upon delivery aliquot and store at -20°C. Avoid freeze / thaw cycles.
存储溶液	pH: 6 Preservative: 0.09% Sodium azide Constituent: Whole serum
纯度	Whole antiserum
克隆	多克隆
同种型	IgG

应用

The Abpromise guarantee **Abpromise™** 承诺保证使用 ab63911 于以下的经测试应用

“应用说明”部分 下显示的仅为推荐的起始稀释度;实际最佳的稀释度/浓度应由使用者检定。

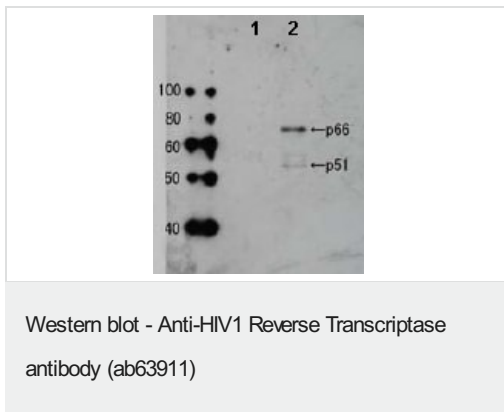
应用	Ab评论	说明
WB		1/2500. Detects a band of approximately 51, 66 kDa.
ELISA		Use at an assay dependent dilution.

靶标

相关性

HIV1 Reverse Transcriptase is an RNA-dependent DNA polymerase of HIV1 (AIDS virus), subtype B origin. It is responsible for the production of a double stranded DNA copy of the single stranded RNA genome that is contained in the HIV1 virus particle and primed by the host cell lysine-tRNA which partly unfolds and anneals to the 5' end of the viral genomic RNA. This is extended by the polymerase function of RT to give a DNA-RNA hybrid. It also has RNaseH activity which degrades the RNA component of this hybrid once it has been copied.

图片

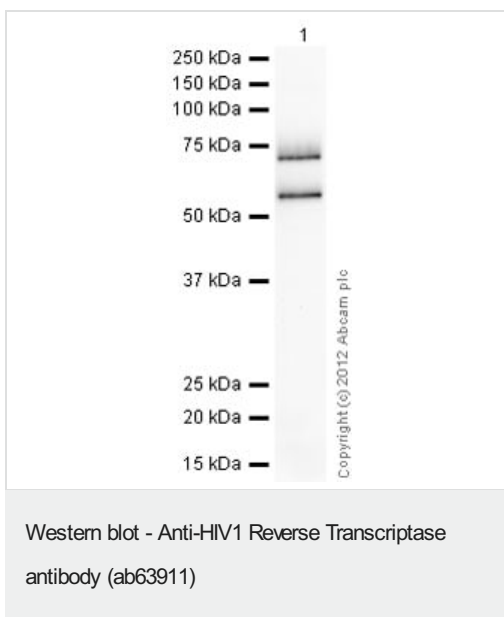


All lanes : Anti-HIV1 Reverse Transcriptase antibody (ab63911) at 1/2500 dilution

Lane 1 : Extract of MT4 cells

Lane 2 : Extract of MT4 cells infected with HIV-1 (LAI strain)

Observed band size: 51,66 kDa



Please note: All products are "FOR RESEARCH USE ONLY. NOT FOR USE IN DIAGNOSTIC PROCEDURES"

Our Abpromise to you: Quality guaranteed and expert technical support

- Replacement or refund for products not performing as stated on the datasheet
- Valid for 12 months from date of delivery
- Response to your inquiry within 24 hours

- We provide support in Chinese, English, French, German, Japanese and Spanish
- Extensive multi-media technical resources to help you
- We investigate all quality concerns to ensure our products perform to the highest standards

If the product does not perform as described on this datasheet, we will offer a refund or replacement. For full details of the Abpromise, please visit <https://www.abcam.cn/abpromise> or contact our technical team.

Terms and conditions

- Guarantee only valid for products bought direct from Abcam or one of our authorized distributors