

Anti-HIV1 Nef antibody [JR6] ab42358

★★★★★ [5 Abreviews](#) [11 References](#) [1 图像](#)

概述

产品名称	Anti-HIV1 Nef抗体[JR6]
描述	小鼠单克隆抗体[JR6] to HIV1 Nef
宿主	Mouse
经测试应用	适用于: WB, ELISA
种属反应性	与反应: Human immunodeficiency virus
免疫原	Recombinant Nef protein of HIV1 (B subtype consensus).
表位	Mapped to amino acids 195-205 (ARELHPEYYKD - B subtype consensus)
常规说明	Also known as clone 01-009. The Life Science industry has been in the grips of a reproducibility crisis for a number of years. Abcam is leading the way in addressing this with our range of recombinant monoclonal antibodies and knockout edited cell lines for gold-standard validation. Please check that this product meets your needs before purchasing. If you have any questions, special requirements or concerns, please send us an inquiry and/or contact our Support team ahead of purchase. Recommended alternatives for this product can be found below, along with publications, customer reviews and Q&As

性能

形式	Liquid
存放说明	Shipped at 4°C. Upon delivery aliquot and store at -20°C or -80°C. Avoid repeated freeze / thaw cycles.
存储溶液	pH: 7.40 Preservative: 0.1% Sodium azide Constituent: PBS
纯度	Protein A purified
纯化说明	IgG fraction, purified by affinity chromatography.
克隆	单克隆
克隆编号	JR6
同种型	IgG1

应用

The Abpromise guarantee

Abpromise™承诺保证使用ab42358于以下的经测试应用

“应用说明”部分 下显示的仅为推荐的起始稀释度;实际最佳的稀释度/浓度应由使用者检定。

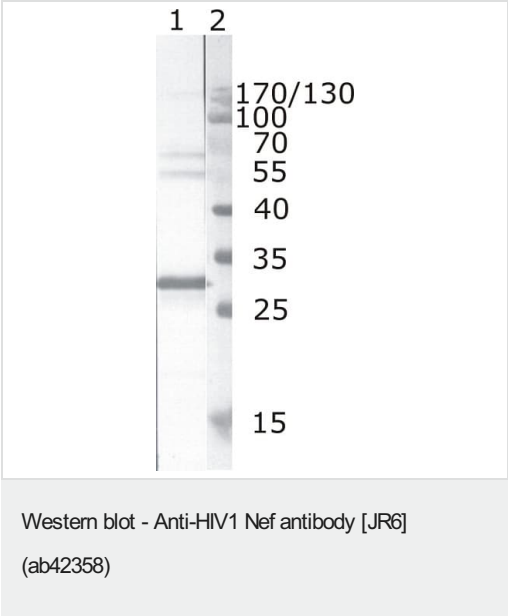
应用	Ab评论	说明
WB	★★★★★ (1)	Use a concentration of 0.2 µg/ml. Predicted molecular weight: 24 kDa.
ELISA		Use a concentration of 0.02 - 1 µg/ml. Titer in ELISA/WB using rNEF of HIV 1 Subtype A.

靶标

相关性

Nef is a early protein that appears to play a role in optimizing the host cell environment for viral replication without causing cell death by apoptosis. Nef enhances virus infectivity and pathogenicity. It down modulates surface MHC I molecules and internalized molecules are sequestered to the trans-Golgi network. The number of cell surface CD4 antigen are decreased by interacting with the Src family kinase LCK thereby inducing LCK CD4 dissociation and by increasing clathrin-dependent endocytosis of this antigen to target it to lysosomal degradation.

图片



Lane 1 : Anti-HIV1 Nef antibody [JR6] (ab42358)

Lane 1 : Recombinant HIV1 Nef (B subtype)

Lane 2 : Protein size marker

Predicted band size: 24 kDa

Please note: All products are "FOR RESEARCH USE ONLY. NOT FOR USE IN DIAGNOSTIC PROCEDURES"

Our Abpromise to you: Quality guaranteed and expert technical support

- Replacement or refund for products not performing as stated on the datasheet
- Valid for 12 months from date of delivery

- Response to your inquiry within 24 hours
- We provide support in Chinese, English, French, German, Japanese and Spanish
- Extensive multi-media technical resources to help you
- We investigate all quality concerns to ensure our products perform to the highest standards

If the product does not perform as described on this datasheet, we will offer a refund or replacement. For full details of the Abpromise, please visit <https://www.abcam.cn/abpromise> or contact our technical team.

Terms and conditions

- Guarantee only valid for products bought direct from Abcam or one of our authorized distributors