

Anti-HIV1 gp120 antibody ab106578

★★★★★ [1 Abreviews](#) [2 图像](#)

概述

产品名称	Anti-HIV1 gp120抗体
描述	兔多克隆抗体to HIV1 gp120
宿主	Rabbit
经测试应用	适用于: WB
种属反应性	与反应: Human immunodeficiency virus
免疫原	Recombinant fragment corresponding to HIV1 gp120. 16 amino acid peptide representing the major HIV1 consensus sequence near the N terminal region of V1/V2 loop (GenBank accession no. AAT67551).
常规说明	<p>The Life Science industry has been in the grips of a reproducibility crisis for a number of years. Abcam is leading the way in addressing this with our range of recombinant monoclonal antibodies and knockout edited cell lines for gold-standard validation. Please check that this product meets your needs before purchasing.</p> <p>If you have any questions, special requirements or concerns, please send us an inquiry and/or contact our Support team ahead of purchase. Recommended alternatives for this product can be found below, along with publications, customer reviews and Q&As</p>

性能

形式	Liquid
存放说明	Shipped at 4°C. Store at 4°C (stable for up to 12 months).
存储溶液	pH: 7.2 Preservative: 0.02% Sodium azide Constituent: PBS
纯度	Immunogen affinity purified
克隆	多克隆
同种型	IgG

应用

The Abpromise guarantee

Abpromise™ 承诺保证使用ab106578于以下的经测试应用

“应用说明”部分 下显示的仅为推荐的起始稀释度;实际最佳的稀释度/浓度应由使用者检定。

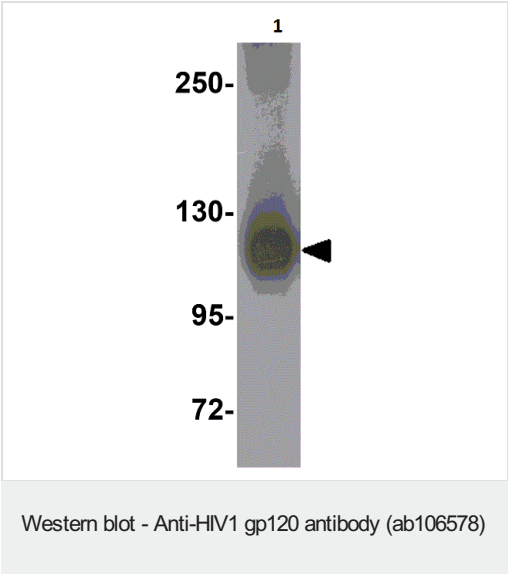
应用	Ab评论	说明
WB		Use a concentration of 0.5 - 1 µg/ml. Predicted molecular weight: 120 kDa.

靶标

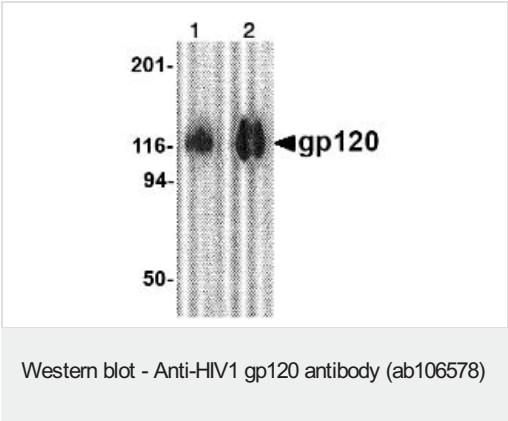
相关性 HIV1 is equipped with the envelope gp160 glycoprotein for interaction with Langerhans cells (LCs) and dendritic cells (DCs), the members of the innate immune system, which confront the virus at the portal of virus entry in the human body. These cells are equipped with receptors by which they bind and endocytose the virus. The gp120 glycoprotein is used for binding to CD4 receptor and CCR5 co-receptor of T helper 2 (Th2) cells, and is able to induce FcepsilonRI(+) hematopoietic cells to produce IL4, which inactivates the host adaptive immune response.

细胞定位 Envelope surface glycoprotein.

图片



Western Blot of HIV1 gp120 (5ng) labeling HIV1 gp120 with Anti-HIV1 gp120 antibody (ab106578) at 1µg/ml.



Lane 1 : Anti-HIV1 gp120 antibody (ab106578) at 1 µg/ml
Lane 2 : Anti-HIV1 gp120 antibody (ab106578) at 2 µg/ml

All lanes : gp120 protein

Lysates/proteins at 1 µg per lane.

Predicted band size: 120 kDa

Please note: All products are "FOR RESEARCH USE ONLY. NOT FOR USE IN DIAGNOSTIC PROCEDURES"

Our Abpromise to you: Quality guaranteed and expert technical support

- Replacement or refund for products not performing as stated on the datasheet
- Valid for 12 months from date of delivery
- Response to your inquiry within 24 hours

- We provide support in Chinese, English, French, German, Japanese and Spanish
- Extensive multi-media technical resources to help you
- We investigate all quality concerns to ensure our products perform to the highest standards

If the product does not perform as described on this datasheet, we will offer a refund or replacement. For full details of the Abpromise, please visit <https://www.abcam.cn/abpromise> or contact our technical team.

Terms and conditions

- Guarantee only valid for products bought direct from Abcam or one of our authorized distributors