


Anti-Histone H4 (di methyl K20) antibody ab9052

★★★★★ **11 Abreviews** **52 References** **5 图像**

概述

产品名称	Anti-Histone H4 (di methyl K20)抗体
描述	兔多克隆抗体to Histone H4 (di methyl K20)
宿主	Rabbit
经测试应用	适用于: IP, WB, ChIP, ICC/IF, IHC-P
种属反应性	与反应: Mouse, Cow, Human, Drosophila melanogaster, Schizosaccharomyces pombe, Toxoplasma gondii 预测可用于: Rat, a wide range of other species  不与反应: Saccharomyces cerevisiae
免疫原	Synthetic peptide. This information is proprietary to Abcam and/or its suppliers.
阳性对照	WB: Calf thymus histone preparation and HeLa whole cell extract and S. pombe. IHC-P: FFPE human pancreas adenocarcinoma tissue. ICC/IF: HeLa cell line
常规说明	<p>The Life Science industry has been in the grips of a reproducibility crisis for a number of years. Abcam is leading the way in addressing this with our range of recombinant monoclonal antibodies and knockout edited cell lines for gold-standard validation. Please check that this product meets your needs before purchasing.</p> <p>If you have any questions, special requirements or concerns, please send us an inquiry and/or contact our Support team ahead of purchase. Recommended alternatives for this product can be found below, along with publications, customer reviews and Q&As</p>

性能

形式	Liquid
存放说明	Shipped at 4°C. Store at +4°C short term (1-2 weeks). Upon delivery aliquot. Store at -20°C or -80°C. Avoid freeze / thaw cycle.
存储溶液	pH: 7.40 Preservative: 0.02% Sodium azide Constituent: PBS
纯度	Batches of this product that have a concentration < 1mg/ml may have BSA added as a stabilising agent. If you would like information about the formulation of a specific lot, please contact our scientific support team who will be happy to help. Immunogen affinity purified

克隆 多克隆
同种型 IgG

应用

The Abpromise guarantee **Abpromise™**承诺保证使用ab9052于以下的经测试应用
“应用说明”部分 下显示的仅为推荐的起始稀释度;实际最佳的稀释度/浓度应由使用者检定。

应用	Ab评论	说明
IP		Use at an assay dependent concentration.
WB	★★★★★ (5)	1/2000. Detects a band of approximately 11 kDa.
ChIP	★★★★★ (1)	Use at an assay dependent concentration. PubMed: 20829797
ICC/IF	★★★★★ (2)	Use a concentration of 1 µg/ml.
IHC-P	★★★★★ (2)	Use a concentration of 1 µg/ml. Perform heat mediated antigen retrieval before commencing with IHC staining protocol.

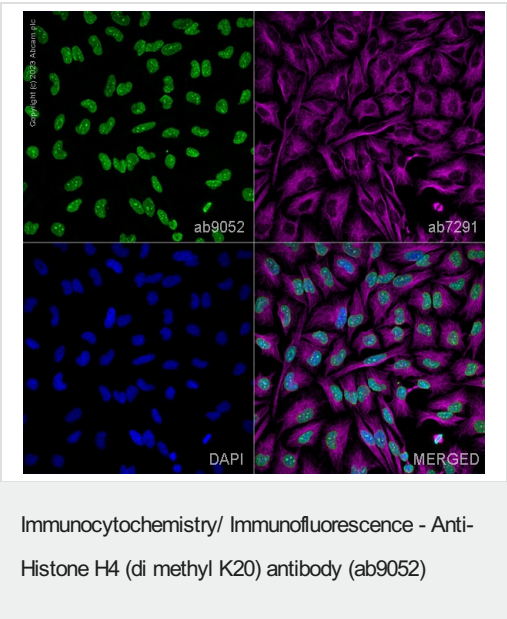
靶标

功能 Core component of nucleosome. Nucleosomes wrap and compact DNA into chromatin, limiting DNA accessibility to the cellular machineries which require DNA as a template. Histones thereby play a central role in transcription regulation, DNA repair, DNA replication and chromosomal stability. DNA accessibility is regulated via a complex set of post-translational modifications of histones, also called histone code, and nucleosome remodeling.

序列相似性 Belongs to the histone H4 family.

翻译后修饰 Acetylation at Lys-6 (H4K5ac), Lys-9 (H4K8ac), Lys-13 (H4K12ac) and Lys-17 (H4K16ac) occurs in coding regions of the genome but not in heterochromatin.
Citullination at Arg-4 (H4R3ci) by PAD4 impairs methylation.
Monomethylation and asymmetric dimethylation at Arg-4 (H4R3me1 and H4R3me2a, respectively) by PRMT1 favors acetylation at Lys-9 (H4K8ac) and Lys-13 (H4K12ac).
Demethylation is performed by JMJD6. Symmetric dimethylation on Arg-4 (H4R3me2s) by the PRDM1/PRMT5 complex may play a crucial role in the germ-cell lineage.
Monomethylated, dimethylated or trimethylated at Lys-21 (H4K20me1, H4K20me2, H4K20me3).
Monomethylation is performed by SET8. Trimethylation is performed by SUV420H1 and SUV420H2 and induces gene silencing.
Ubiquitinated by the CUL4-DDB-RBX1 complex in response to ultraviolet irradiation. This may weaken the interaction between histones and DNA and facilitate DNA accessibility to repair proteins. Monoubiquitinated at Lys-92 of histone H4 (H4K91ub1) in response to DNA damage. The exact role of H4K91ub1 in DNA damage response is still unclear but it may function as a licensing signal for additional histone H4 post-translational modifications such as H4 Lys-21 methylation (H4K20me).
Sumoylated, which is associated with transcriptional repression.

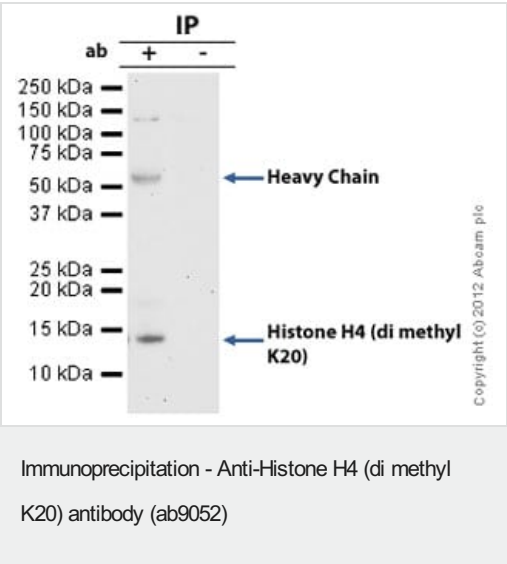
细胞定位 Nucleus. Chromosome.



ab9052 staining Histone H4 (di methyl K20) in HeLa cells. The cells were fixed with 100% methanol (5 min), permeabilized with 0.1% PBS-Triton X-100 for 5 minutes and then blocked with 1% BSA/10% normal goat serum/0.3M glycine in 0.1%PBS-Tween for 1h. The cells were then incubated overnight at 4°C with ab9052 at 0.1µg/ml and **ab7291**, Mouse monoclonal [DM1A] to alpha Tubulin - Loading Control. Cells were then incubated with **ab150081**, Goat polyclonal Secondary Antibody to Rabbit IgG - H&L (Alexa Fluor® 488), pre-adsorbed at 1/1000 dilution (shown in green) and **ab150120**, Goat polyclonal Secondary Antibody to Mouse IgG - H&L (Alexa Fluor® 594), pre-adsorbed at 1/1000 dilution (shown in pseudocolour magenta). Nuclear DNA was labelled with DAPI (shown in blue).

Also suitable in cells fixed with 4% paraformaldehyde (10 min).

Image was acquired with a high-content analyser (Operetta CLS, Perkin Elmer) and a maximum intensity projection of confocal sections is shown.



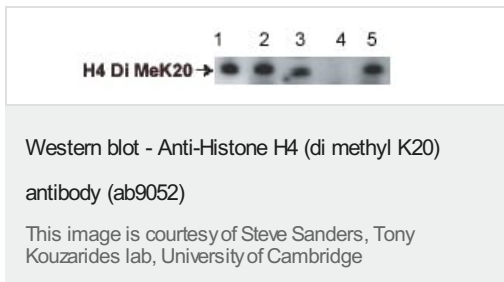
Histone H4 (di methyl K20) was immunoprecipitated using 0.5mg HeLa whole cell extract, 5µg of Rabbit polyclonal to Histone H4 (di methyl K20) and 50µl of protein G magnetic beads (+). No antibody was added to the control (-).

The antibody was incubated under agitation with Protein G beads for 10min, Hela whole cell extract lysate diluted in RIPA buffer was added to each sample and incubated for a further 10min under agitation.

Proteins were eluted by addition of 40µl SDS loading buffer and incubated for 10min at 70°C; 10µl of each sample was separated on a SDS PAGE gel, transferred to a nitrocellulose membrane, blocked with 5% BSA and probed with ab9052.

Secondary: Clean blot (HRP conjugate) at 1/1000 dilution.

Band: 14kDa: Histone H4 (di methyl K20).



All lanes : Anti-Histone H4 (di methyl K20) antibody (ab9052) at 1/2000 dilution

Lane 1 : yH4 17-24 peptide

Lane 2 : Unmodified yH4 17-24 peptide

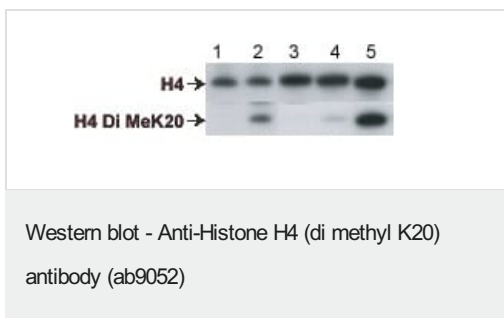
Lane 3 : Mono methyl K20 yH4 17-24 peptide

Lane 4 : Di methyl K20 yH4 17-24 peptide

Lane 5 : Tri methyl K20 yH4 17-24 peptide

Blocking peptides at 1 µg/ml per lane.

Performed under reducing conditions.



All lanes : Upper blot - Histone H4 antibody (gift of A. Verreault)

Lower blot - Rabbit polyclonal to Histone H4 di methyl K20 (ab9052) at 1/2000

Lane 1 : S.cerevisiae extract

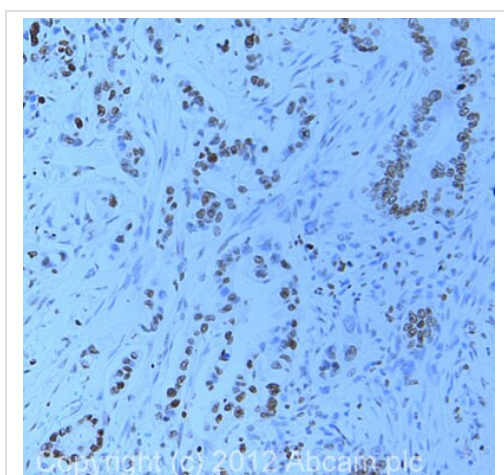
Lane 2 : S.pombe extract

Lane 3 : S.pombe rH4

Lane 4 : Drosophila rH4

Lane 5 : Histones (Roche)

Di methylation at K20 is seen in S. pombe and in calf thymus (Roche). S. cerevisiae lacks K20 (di) methylation.



Immunohistochemistry (Formalin/PFA-fixed paraffin-embedded sections) - Anti-Histone H4 (di methyl K20) antibody (ab9052)

IHC image of ab9052 staining in human pancreas adenocarcinoma formalin fixed paraffin embedded tissue section, performed on a Leica Bond™ system using the standard protocol F. The section was pre-treated using heat mediated antigen retrieval with sodium citrate buffer (pH6, epitope retrieval solution 1) for 20 mins. The section was then incubated with ab9052, 1µg/ml, for 15 mins at room temperature and detected using an HRP conjugated compact polymer system. DAB was used as the chromogen. The section was then counterstained with haematoxylin and mounted with DPX.

For other IHC staining systems (automated and non-automated) customers should optimize variable parameters such as antigen retrieval conditions, primary antibody concentration and antibody incubation times.

Please note: All products are "FOR RESEARCH USE ONLY. NOT FOR USE IN DIAGNOSTIC PROCEDURES"

Our Abpromise to you: Quality guaranteed and expert technical support

- Replacement or refund for products not performing as stated on the datasheet
- Valid for 12 months from date of delivery
- Response to your inquiry within 24 hours

- We provide support in Chinese, English, French, German, Japanese and Spanish
- Extensive multi-media technical resources to help you
- We investigate all quality concerns to ensure our products perform to the highest standards

If the product does not perform as described on this datasheet, we will offer a refund or replacement. For full details of the Abpromise, please visit <https://www.abcam.cn/abpromise> or contact our technical team.

Terms and conditions

- Guarantee only valid for products bought direct from Abcam or one of our authorized distributors