


Anti-Histone H2B (acetyl K15) antibody [EP955Y] - ChIP Grade ab62335

重组 RabMAb

★★★★★ [6 Abreviews](#) [4 References](#) [4 图像](#)

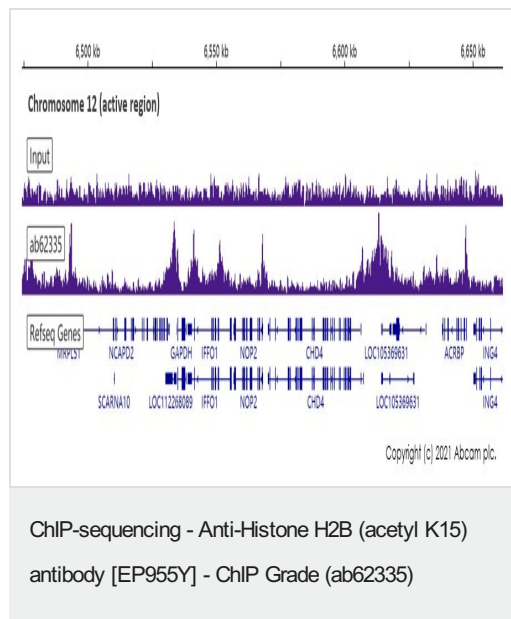
概述

产品名称	Anti-Histone H2B (acetyl K15)抗体[EP955Y] - ChIP Grade
描述	兔单克隆抗体[EP955Y] to Histone H2B (acetyl K15) - ChIP Grade
宿主	Rabbit
特异性	This antibody only detects Histone H2B acetylated on Lysine 15.
经测试应用	适用于: ChIP-sequencing, WB, IHC-P 不适用于: IP
种属反应性	与反应: Mouse, Human 预测可用于: Rat 
免疫原	Synthetic peptide. This information is proprietary to Abcam and/or its suppliers.
阳性对照	HeLa whole cell lysate (ab150035) or human breast carcinoma tissue; ChIP-seq: Chromatin prepared from HeLa cells.
常规说明	This product is a recombinant monoclonal antibody, which offers several advantages including: <ul style="list-style-type: none">- High batch-to-batch consistency and reproducibility- Improved sensitivity and specificity- Long-term security of supply- Animal-free production For more information see here . Our RabMAb [®] technology is a patented hybridoma-based technology for making rabbit monoclonal antibodies. For details on our patents, please refer to RabMAb[®] patents .

性能

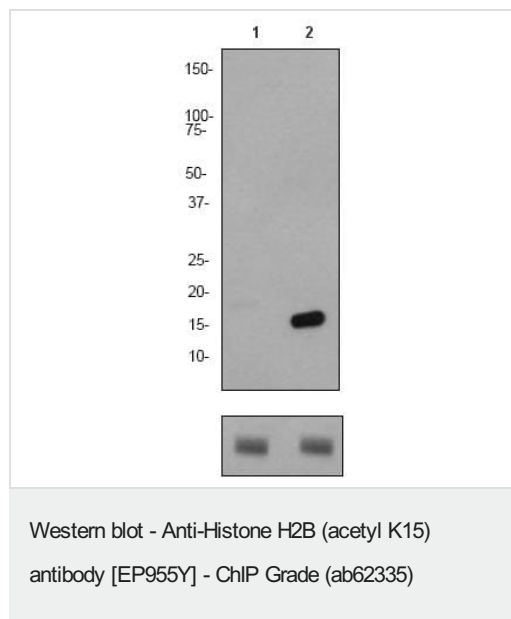
形式	Liquid
存放说明	Shipped at 4°C. Upon delivery aliquot and store at -20°C. Avoid freeze / thaw cycles.
存储溶液	pH: 7.20 Preservative: 0.05% Sodium azide Constituents: 0.1% BSA, 40% Glycerol (glycerin, glycerine), 9.85% Tris glycine, 50% Tissue culture supernatant

图片



Chromatin was prepared from HeLa cells. Cells were fixed with 1% formaldehyde for 10 minutes. ChIP was performed with 10^7 HeLa cells and 4 μg of ab62335 [EP955Y]. ChIP DNA was sequenced on the Illumina NovaSeq 6000 to a depth of 30 million reads.

Additional screenshots of mapped reads can be downloaded [here](#).



All lanes : Anti-Histone H2B (acetyl K15) antibody [EP955Y] - ChIP Grade (ab62335) at 1/2000 dilution

Lane 1 : HeLa cell lysate (untreated)

Lane 2 : HeLa cell lysate (treated with TSA)

Lysates/proteins at 10 μg per lane.

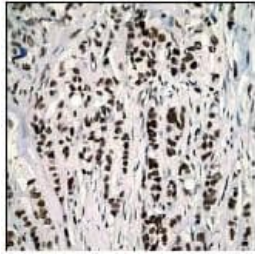
Secondary

All lanes : Goat anti-Rabbit HRP conjugate at 1/2000 dilution

Predicted band size: 14 kDa

Observed band size: 17 kDa

The bottom image shows beta Tubulin as a positive control.



Ab62335 (1/100-1/250) staining human Histone H2B in human breast carcinoma tissue by immunohistochemistry using paraffin embedded tissue.

Immunohistochemistry (Formalin/PFA-fixed paraffin-embedded sections) - Anti-Histone H2B (acetyl K15) antibody [EP955Y] - ChIP Grade (ab62335)

Why choose a recombinant antibody?



Research with confidence
Consistent and reproducible results



Long-term and scalable supply
Recombinant technology



Success from the first experiment
Confirmed specificity



Ethical standards compliant
Animal-free production

Anti-Histone H2B (acetyl K15) antibody [EP955Y] - ChIP Grade (ab62335)

Please note: All products are "FOR RESEARCH USE ONLY. NOT FOR USE IN DIAGNOSTIC PROCEDURES"

Our Abpromise to you: Quality guaranteed and expert technical support

- Replacement or refund for products not performing as stated on the datasheet
- Valid for 12 months from date of delivery
- Response to your inquiry within 24 hours
- We provide support in Chinese, English, French, German, Japanese and Spanish
- Extensive multi-media technical resources to help you
- We investigate all quality concerns to ensure our products perform to the highest standards

If the product does not perform as described on this datasheet, we will offer a refund or replacement. For full details of the Abpromise, please visit <https://www.abcam.cn/abpromise> or contact our technical team.

Terms and conditions

- Guarantee only valid for products bought direct from Abcam or one of our authorized distributors