


### Anti-HIP55 antibody ab77147

#### 2 图像

#### 概述

产品名称	Anti-HIP55抗体
描述	兔多克隆抗体to HIP55
宿主	Rabbit
经测试应用	适用于: ICC/IF, WB
种属反应性	与反应: Human 预测可用于: Mouse, Rat, Cow, Orangutan 
免疫原	Synthetic peptide corresponding to Human HIP55 aa 400 to the C-terminus (C terminal) conjugated to keyhole limpet haemocyanin. (Peptide available as <a href="#">ab91635</a> )
阳性对照	This antibody gave a positive signal in the following human whole cell lysates: SHSY-5Y; SK N SH; SK N BE; HeLa.
常规说明	<p>The Life Science industry has been in the grips of a reproducibility crisis for a number of years. Abcam is leading the way in addressing this with our range of recombinant monoclonal antibodies and knockout edited cell lines for gold-standard validation. Please check that this product meets your needs before purchasing.</p> <p>If you have any questions, special requirements or concerns, please send us an inquiry and/or contact our Support team ahead of purchase. Recommended alternatives for this product can be found below, along with publications, customer reviews and Q&amp;As</p>

#### 性能

形式	Liquid
存放说明	Shipped at 4°C. Store at +4°C short term (1-2 weeks). Upon delivery aliquot. Store at -20°C or -80°C. Avoid freeze / thaw cycle.
存储溶液	pH: 7.40 Preservative: 0.02% Sodium azide Constituent: PBS
	Batches of this product that have a concentration < 1mg/ml may have BSA added as a stabilising agent. If you would like information about the formulation of a specific lot, please contact our scientific support team who will be happy to help.

纯度	Immunogen affinity purified
克隆	多克隆
同种型	IgG

应用

The Abpromise guarantee      **Abpromise™**承诺保证使用ab77147于以下的经测试应用

“应用说明”部分 下显示的仅为推荐的起始稀释度;实际最佳的稀释度/浓度应由使用者检定。

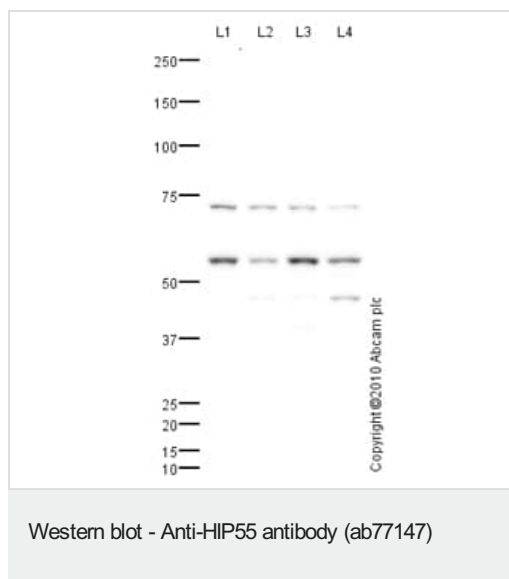
应用	Ab评论	说明
ICC/IF		
WB		

应用说明	<p>ICC/IF: Use at a concentration of 5 µg/ml.</p> <p>WB: Use at a concentration of 1 µg/ml. Detects a band of approximately 55 kDa (predicted molecular weight: 48 kDa).</p> <p>Not yet tested in other applications.</p> <p>Optimal dilutions/concentrations should be determined by the end user.</p>
------	---

靶标

功能	Actin-binding adapter protein. May act as a common effector of antigen receptor-signaling pathways in leukocytes. Its association with dynamin suggests that it may also connect the actin cytoskeleton to endocytic function. Acts as a key component of the immunological synapse that regulates T-cell activation by bridging TCRs and the actin cytoskeleton to gene activation and endocytic processes. Binds to F-actin but is not involved in actin polymerization, capping or bundling. Does not bind G-actin.
序列相似性	<p>Belongs to the ABP1 family.</p> <p>Contains 1 ADF-H domain.</p> <p>Contains 1 SH3 domain.</p>
结构域	The SH3 domain mediates interaction with SHANK2, SHANK3 and PRAM1.
翻译后修饰	Degraded by caspases during apoptosis.
细胞定位	Cytoplasm > cytoskeleton. Cell projection > lamellipodium. Cortical cytoskeleton. Associates with lamellipodial actin.

图片



**All lanes :** Anti-HIP55 antibody (ab77147) at 1 µg/ml

**Lane 1 :** SHSY-5Y (Human neuroblastoma cell line) Whole Cell Lysate

**Lane 2 :** SK N BE (Human neuroblastoma) Whole Cell Lysate

**Lane 3 :** SK N SH (Human neuroblastoma) Whole Cell Lysate

**Lane 4 :** HeLa (Human epithelial carcinoma cell line) Whole Cell Lysate

Lysates/proteins at 10 µg per lane.

### Secondary

**All lanes :** Goat polyclonal to Rabbit IgG - H&L - Pre-Adsorbed (HRP) at 1/3000 dilution

Developed using the ECL technique.

Performed under reducing conditions.

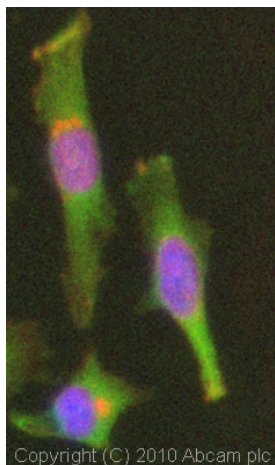
**Predicted band size:** 48 kDa

**Observed band size:** 55 kDa

**Additional bands at:** 48 kDa, 72 kDa. We are unsure as to the identity of these extra bands.

**Exposure time:** 5 minutes

The 55 kDa band observed is comparable to the molecular weight seen with other commercially available antibodies to Human Drebrin-like protein (HIP 55).



Immunocytochemistry/ Immunofluorescence - Anti-HIP55 antibody (ab77147)

ICC/IF image of ab77147 stained HeLa cells. The cells were 4% PFA fixed (10 min) and then incubated in 1%BSA / 10% normal goat serum / 0.3M glycine in 0.1% PBS-Tween for 1h to permeabilise the cells and block non-specific protein-protein interactions. The cells were then incubated with the antibody (ab77147, 5µg/ml) overnight at +4°C. The secondary antibody (green) was Alexa Fluor® 488 goat anti-rabbit IgG (H+L) used at a 1/1000 dilution for 1h. Alexa Fluor® 594 WGA was used to label plasma membranes (red) at a 1/200 dilution for 1h. DAPI was used to stain the cell nuclei (blue) at a concentration of 1.43µM. This antibody also gave a positive result in 4% PFA fixed (10 min) Hek293, HepG2 and MCF7 cells at 5µg/ml, and in 100% methanol fixed (5 min) HeLa, Hek293, HepG2 and MCF7 cells at 5µg/ml.

**Please note:** All products are "FOR RESEARCH USE ONLY. NOT FOR USE IN DIAGNOSTIC PROCEDURES"

### Our Abpromise to you: Quality guaranteed and expert technical support

- Replacement or refund for products not performing as stated on the datasheet
- Valid for 12 months from date of delivery
- Response to your inquiry within 24 hours
- We provide support in Chinese, English, French, German, Japanese and Spanish
- Extensive multi-media technical resources to help you
- We investigate all quality concerns to ensure our products perform to the highest standards

If the product does not perform as described on this datasheet, we will offer a refund or replacement. For full details of the Abpromise, please visit <https://www.abcam.cn/abpromise> or contact our technical team.

### Terms and conditions

- Guarantee only valid for products bought direct from Abcam or one of our authorized distributors