

# Anti-Hexokinase 1 antibody [EPR10135(B)] ab154839

敲除验证
重组
RabMAb

### 3 图像

#### 概述

<b>产品名称</b>	Anti-Hexokinase 1抗体[EPR10135(B)]
<b>描述</b>	兔单克隆抗体[EPR10135(B)] to Hexokinase 1
<b>宿主</b>	Rabbit
<b>经测试应用</b>	<b>适用于:</b> WB <b>不适用于:</b> Flow Cyt, ICC/IF, IHC-P or IP
<b>种属反应性</b>	<b>与反应:</b> Human
<b>免疫原</b>	Synthetic peptide. This information is proprietary to Abcam and/or its suppliers.
<b>阳性对照</b>	WB: HEK-293T, MCF7, U-87 MG, and HeLa cell lysates.
<b>常规说明</b>	<p>This product is a recombinant monoclonal antibody, which offers several advantages including:</p> <ul style="list-style-type: none"> <li>- High batch-to-batch consistency and reproducibility</li> <li>- Improved sensitivity and specificity</li> <li>- Long-term security of supply</li> <li>- Animal-free production</li> </ul> <p>For more information <a href="#">see here</a>.</p> <p>Our RabMAb<sup>®</sup> technology is a patented hybridoma-based technology for making rabbit monoclonal antibodies. For details on our patents, please refer to <a href="#">RabMAb<sup>®</sup> patents</a>.</p> <p>Mouse, Rat: We have preliminary internal testing data to indicate this antibody may not react with these species. Please contact us for more information.</p>

#### 性能

<b>形式</b>	Liquid
<b>存放说明</b>	Shipped at 4°C. Store at -20°C.
<b>存储溶液</b>	pH: 7.2 Preservative: 0.01% Sodium azide Constituents: 9% PBS, 40% Glycerol (glycerin, glycerine), 0.05% BSA, 50% Tissue culture supernatant
<b>纯度</b>	Tissue culture supernatant
<b>克隆</b>	单克隆

克隆编号 EPR10135(B)

同种型 IgG

## 应用

**The Abpromise guarantee** **Abpromise™**承诺保证使用ab154839于以下的经测试应用

“应用说明”部分 下显示的仅为推荐的起始稀释度;实际最佳的稀释度/浓度应由使用者检定。

应用	Ab评论	说明
WB		1/1000 - 1/10000. Predicted molecular weight: 102 kDa.

应用说明 Is unsuitable for Flow Cyt, ICC/IF, IHC-P or IP.

## 靶标

**组织特异性** Isoform 2 is erythrocyte specific. Isoform 3 and isoform 4 are testis-specific.

**通路** Carbohydrate metabolism; hexose metabolism.

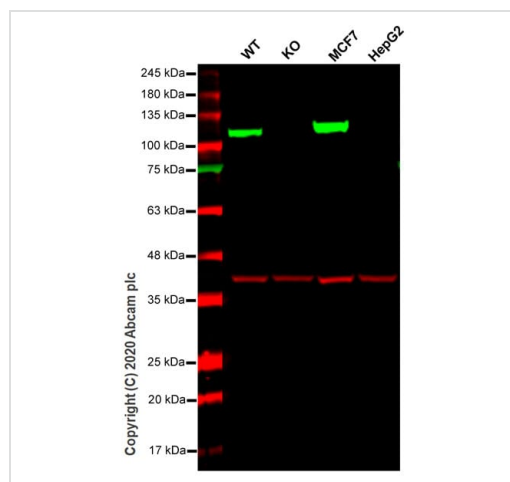
**疾病相关** Hexokinase deficiency  
Neuropathy, hereditary motor and sensory, Russe type

**序列相似性** Belongs to the hexokinase family.  
Contains 2 hexokinase domains.

**结构域** The N- and C-terminal halves of this hexokinase show extensive sequence similarity to each other. The catalytic activity is associated with the C-terminus while regulatory function is associated with the N-terminus. Each domain can bind a single glucose and Gluc-6-P molecule.

**细胞定位** Mitochondrion outer membrane. Its hydrophobic N-terminal sequence may be involved in membrane binding.

## 图片



Western blot - Anti-Hexokinase 1 antibody [EPR10135(B)] (ab154839)

**All lanes** : Anti-Hexokinase 1 antibody [EPR10135(B)] (ab154839) at 1/1000 dilution

**Lane 1** : Wild-type HEK-293T cell lysate

**Lane 2** : HK1 knockout HeLa cell lysate

**Lane 3** : MCF7 cell lysate

**Lane 4** : HepG2 cell lysate

Lysates/proteins at 20 µg per lane.

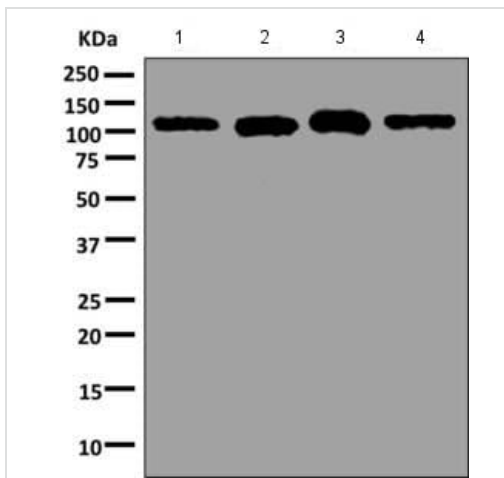
Performed under reducing conditions.

**Predicted band size:** 102 kDa

**Observed band size:** 102 kDa

**Lanes 1-4:** Merged signal (red and green). Green - ab154839 observed at 102 kDa. Red - loading control, **ab8245** observed at 37 kDa.

ab154839 Anti-Hexokinase 1 antibody [EPR10135(B)] was shown to specifically react with Hexokinase 1 in wild-type HEK293T cells. Loss of signal was observed when knockout cell line **ab267279** (knockout cell lysate **ab257161**) was used. Wild-type and Hexokinase 1 knockout samples were subjected to SDS-PAGE. ab154839 and Anti-GAPDH antibody [6C5] - Loading Control (**ab8245**) were incubated overnight at 4°C at 1 in 1000 dilution and 1 in 20000 dilution respectively. Blots were developed with Goat anti-Rabbit IgG H&L (IRDye® 800CW) preadsorbed (**ab216773**) and Goat anti-Mouse IgG H&L (IRDye® 680RD) preadsorbed (**ab216776**) secondary antibodies at 1 in 10000 dilution for 1 hour at room temperature before imaging.



Western blot - Anti-Hexokinase 1 antibody [EPR10135(B)] (ab154839)

**All lanes :** Anti-Hexokinase 1 antibody [EPR10135(B)] (ab154839) at 1/1000 dilution

**Lane 1 :** 293T cell lysate

**Lane 2 :** MCF7 cell lysate

**Lane 3 :** U-87 MG cell lysate

**Lane 4 :** HeLa cell lysate

Lysates/proteins at 10 µg per lane.

**Predicted band size:** 102 kDa

Why choose a recombinant antibody?

 <p><b>Research with confidence</b> Consistent and reproducible results</p>	 <p><b>Long-term and scalable supply</b> Recombinant technology</p>
 <p><b>Success from the first experiment</b> Confirmed specificity</p>	 <p><b>Ethical standards compliant</b> Animal-free production</p>

Anti-Hexokinase 1 antibody [EPR10135(B)]  
(ab154839)

**Please note:** All products are "FOR RESEARCH USE ONLY. NOT FOR USE IN DIAGNOSTIC PROCEDURES"

### Our Abpromise to you: Quality guaranteed and expert technical support

---

- Replacement or refund for products not performing as stated on the datasheet
- Valid for 12 months from date of delivery
- Response to your inquiry within 24 hours
- We provide support in Chinese, English, French, German, Japanese and Spanish
- Extensive multi-media technical resources to help you
- We investigate all quality concerns to ensure our products perform to the highest standards

If the product does not perform as described on this datasheet, we will offer a refund or replacement. For full details of the Abpromise, please visit <https://www.abcam.cn/abpromise> or contact our technical team.

### Terms and conditions

---

- Guarantee only valid for products bought direct from Abcam or one of our authorized distributors