



Anti-HES5 antibody ab25374

★★★★★ 3 Abreviews 19 References 1 图像

概述	
产品名称	Anti-HES5抗体
描述	兔多克隆抗体to HES5
宿主	Rabbit
经测试应用	适用于: WB, ELISA, IHC-Fr
种属反应性	与反应: Mouse, Rat, Human
免疫原	Synthetic peptide corresponding to Mouse HES5 aa 50-150. Database link: <a href="#">P70120</a> <div> <a href="#">Run BLAST with</a>  <a href="#">Run BLAST with</a></div>
常规说明	<p>The Life Science industry has been in the grips of a reproducibility crisis for a number of years. Abcam is leading the way in addressing this with our range of recombinant monoclonal antibodies and knockout edited cell lines for gold-standard validation. Please check that this product meets your needs before purchasing.</p> <p>If you have any questions, special requirements or concerns, please send us an inquiry and/or contact our Support team ahead of purchase. Recommended alternatives for this product can be found below, along with publications, customer reviews and Q&amp;As</p>
性能	
形式	Liquid
存放说明	Shipped at 4°C. Store at +4°C short term (1-2 weeks). Upon delivery aliquot. Store at -20°C long term.
存储溶液	pH: 7.20 Constituents: PBS, 40% Glycerol
纯度	Protein A purified
克隆	多克隆
同种型	IgG
应用	

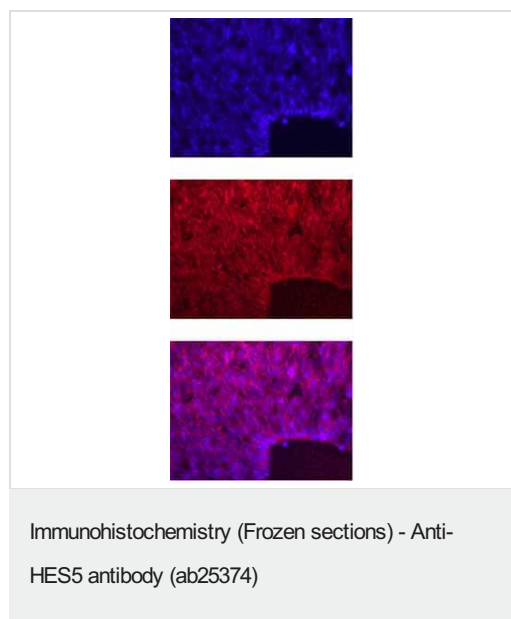
“应用说明”部分 下显示的仅为推荐的起始稀释度;实际最佳的稀释度/浓度应由使用者检定。

应用	Ab评论	说明
WB		Use at an assay dependent concentration.
ELISA		Use at an assay dependent concentration.
IHC-Fr	★★★★★ (1)	1/200 - 1/1000. This product has not been tested with paraffin sections.

## 靶标

功能	Transcriptional repressor of genes that require a bHLH protein for their transcription.
组织特异性	Expressed in fetal heart and brain tumors.
序列相似性	Contains 1 basic helix-loop-helix (bHLH) domain. Contains 1 Orange domain.
结构域	Has a particular type of basic domain (presence of a helix-interrupting proline) that binds to the N-box (CACNAG), rather than the canonical E-box (CANNTG). The C-terminal WRPW motif is a transcriptional repression domain necessary for the interaction with Groucho/TLE family members, transcriptional corepressors recruited to specific target DNA by Hairy-related proteins.
细胞定位	Nucleus.

## 图片



ab25374 staining the cortex of e14.5 mouse embryo by IHC-Fr. The tissue was frozen and cut into 10 µm slices on a cyrostat then fixed and blocked prior to incubating with the primary antibody (diluted 1/100) for 90 minutes. A fluorescent conjugated secondary antibody was incubated with the sample for 30 minutes. HES-5 is shown in red in the nuclear regions; the blue staining is Hoechst nuclear counter stain.

**Please note:** All products are "FOR RESEARCH USE ONLY. NOT FOR USE IN DIAGNOSTIC PROCEDURES"

### **Our Abpromise to you: Quality guaranteed and expert technical support**

---

- Replacement or refund for products not performing as stated on the datasheet
- Valid for 12 months from date of delivery
- Response to your inquiry within 24 hours
  
- We provide support in Chinese, English, French, German, Japanese and Spanish
- Extensive multi-media technical resources to help you
- We investigate all quality concerns to ensure our products perform to the highest standards

If the product does not perform as described on this datasheet, we will offer a refund or replacement. For full details of the Abpromise, please visit <https://www.abcam.cn/abpromise> or contact our technical team.

### **Terms and conditions**

---

- Guarantee only valid for products bought direct from Abcam or one of our authorized distributors