


Anti-Hes1 antibody [EPR4226] ab108937

重组 RabMAb

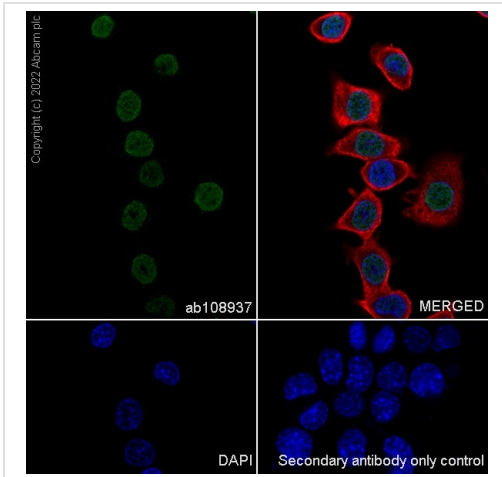
★★★★☆ [14 Abreviews](#) [70 References](#) [7 图像](#)

概述

产品名称	Anti-Hes1抗体[EPR4226]
描述	兔单克隆抗体[EPR4226] to Hes1
宿主	Rabbit
经测试应用	适用于: ICC/IF, WB, IHC-P, Flow Cyt (Intra) 不适用于: IP
种属反应性	与反应: Rat, Human 预测可用于: Mouse 
免疫原	Synthetic peptide. This information is proprietary to Abcam and/or its suppliers.
阳性对照	WB: SH-SY5Y, MOLT-4, MDA-MB-231, MCF7, K-562, HUVEC, HepG2, Human brain, Human liver, Human placenta.
常规说明	This product is a recombinant monoclonal antibody, which offers several advantages including: - High batch-to-batch consistency and reproducibility - Improved sensitivity and specificity - Long-term security of supply - Animal-free production For more information see here . Our RabMAb [®] technology is a patented hybridoma-based technology for making rabbit monoclonal antibodies. For details on our patents, please refer to RabMAb[®] patents .

性能

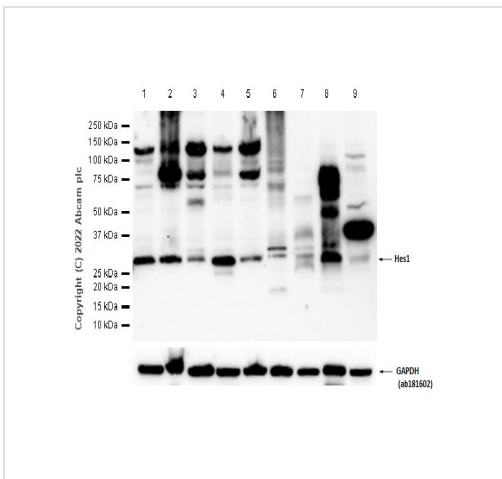
形式	Liquid
存放说明	Shipped at 4°C. Store at +4°C short term (1-2 weeks). Upon delivery aliquot. Store at -20°C. Stable for 12 months at -20°C.
存储溶液	pH: 7.20 Preservative: 0.01% Sodium azide Constituents: 40% Glycerol, 0.05% BSA, 59% PBS
纯度	Protein A purified
克隆	单克隆



Immunocytochemistry/ Immunofluorescence - Anti-Hes1 antibody [EPR4226] (ab108937)

Immunofluorescent analysis of 4% Paraformaldehyde fixed 0.1% TritonX-100 permeabilised SH-SY5Y (Human neuroblastoma epithelial cell) labelling Hes1 with ab108937 at 1/1000 dilution, followed by AlexaFluor® 488 Goat anti-Rabbit secondary (**ab150077**) secondary antibody at 1/1000 dilution (green). Confocal image showing nuclear staining in SH-SY5Y cell line is observed. Anti-alpha Tubulin antibody [DM1A] - Microtubule Marker (Alexa Fluor® 594) (**ab195889**) was used to counterstain alpha Tubulin at 1/200 dilution (red). The Nuclear counterstain was DAPI (blue).

Secondary antibody only control: Secondary antibody is AlexaFluor® 488 Goat anti-Rabbit secondary (**ab150077**) at 1/1000 dilution.



Western blot - Anti-Hes1 antibody [EPR4226] (ab108937)

All lanes : Anti-Hes1 antibody [EPR4226] (ab108937) at 1/1000 dilution

Lane 1 : SH-SY5Y (Human bone marrow epithelial) whole cell lysate

Lane 2 : MOLT-4 (Human lymphoblastic leukemia T lymphoblast) whole cell lysate

Lane 3 : MDA-MB-231 (Human breast adenocarcinoma epithelial cell) whole cell lysate

Lane 4 : MCF7 (Human breast adenocarcinoma epithelial cell) whole cell lysate

Lane 5 : K-562 (Human chronic myelogenous leukemia lymphoblast) whole cell lysate

Lane 6 : HUVEC (Human umbilical vein endothelial cell) whole cell lysate

Lane 7 : HepG2 (Human hepatocellular carcinoma epithelial cell) whole cell lysate

Lane 8 : Human brain tissue lysate

Lane 9 : Human liver tissue lysate

Lysates/proteins at 20 µg per lane.

Secondary

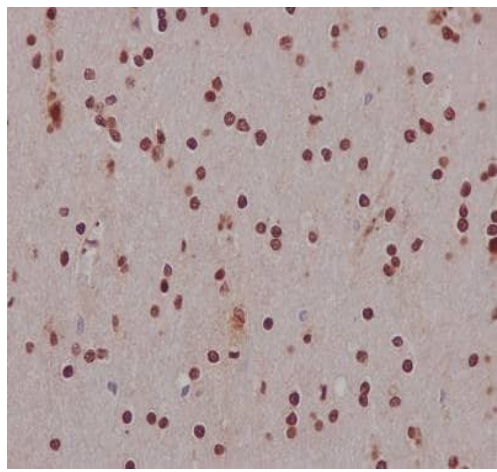
All lanes : Goat Anti-Rabbit IgG (HRP), specific to the non-reduced form of IgG at 1/20000 dilution

Predicted band size: 30 kDa

Observed band size: 30 kDa

Exposure time: 120 seconds

Blocking and diluting buffer and concentration: 5% NFD
/TBST.



Immunohistochemistry (Formalin/PFA-fixed paraffin-embedded sections) - Anti-Hes1 antibody [EPR4226] (ab108937)

Primary ab concentration dilution: 1:200, (0.5ug/ml)

Secondary ab: ImmunoHistoprobe (Ready to use) HRP Polymer for Rabbit IgG

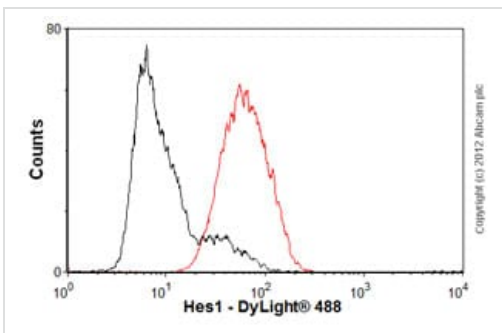
Secondary ab concentration: Prediluted

Tissue: Human brain

Fixative: Paraffin-embedded sections

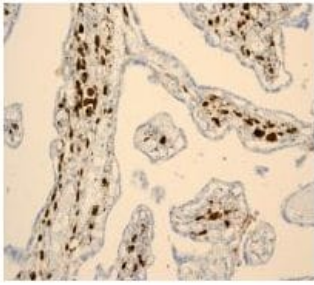
Counter stain: Hematoxylin

Antigen retrieval: Perform heat mediated antigen retrieval using Tris/EDTA Buffer, PH9



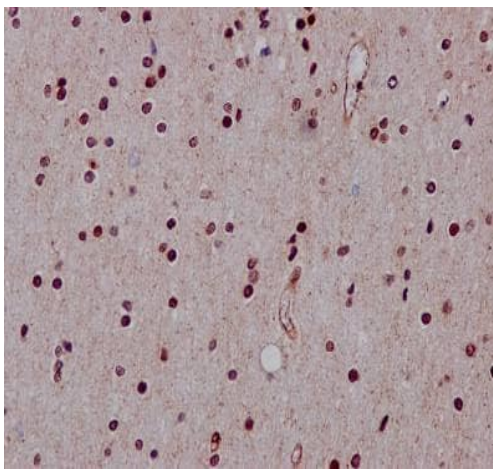
Flow Cytometry (Intracellular) - Anti-Hes1 antibody [EPR4226] (ab108937)

Overlay histogram showing SH-SY5Y cells stained with unpurified ab108937 (red line). The cells were fixed with 80% methanol (5 min) and then permeabilized with 0.1% PBS-Tween for 20 min. The cells were then incubated in 1x PBS / 10% normal goat serum / 0.3M glycine to block non-specific protein-protein interactions. The cells were then incubated with the antibody (ab108937, 1/100 dilution) for 30 min at 22°C. The secondary antibody used was DyLight® 488 goat anti-rabbit IgG (H+L) (**ab96899**) at 1/500 dilution for 30 min at 22°C. Isotype control antibody (black line) was rabbit IgG (monoclonal) (1µg/1x10⁶ cells) used under the same conditions. Acquisition of >5,000 events was performed.



Immunohistochemistry (Formalin/PFA-fixed paraffin-embedded sections) - Anti-Hes1 antibody [EPR4226] (ab108937)

Immunohistochemical staining of Hes1 in paraffin-embedded human placenta tissue with unpurified ab108937 at 1/250 dilution. Perform heat mediated antigen retrieval before commencing with IHC staining protocol.



Immunohistochemistry (Formalin/PFA-fixed paraffin-embedded sections) - Anti-Hes1 antibody [EPR4226] (ab108937)

Immunohistochemical staining of paraffin embedded human brain with unpurified ab108937 at a working dilution of 1 in 90. The secondary antibody used is a HRP polymer for rabbit IgG. The sample is counter-stained with hematoxylin. Antigen retrieval was performed using Tris-EDTA buffer, pH 9.0.

Why choose a recombinant antibody?



Research with confidence
Consistent and reproducible results



Long-term and scalable supply
Recombinant technology



Success from the first experiment
Confirmed specificity



Ethical standards compliant
Animal-free production

Anti-Hes1 antibody [EPR4226] (ab108937)

Please note: All products are "FOR RESEARCH USE ONLY. NOT FOR USE IN DIAGNOSTIC PROCEDURES"

Our Abpromise to you: Quality guaranteed and expert technical support

- Replacement or refund for products not performing as stated on the datasheet
- Valid for 12 months from date of delivery
- Response to your inquiry within 24 hours

- We provide support in Chinese, English, French, German, Japanese and Spanish
- Extensive multi-media technical resources to help you
- We investigate all quality concerns to ensure our products perform to the highest standards

If the product does not perform as described on this datasheet, we will offer a refund or replacement. For full details of the Abpromise, please visit <https://www.abcam.cn/abpromise> or contact our technical team.

Terms and conditions

- Guarantee only valid for products bought direct from Abcam or one of our authorized distributors