

Anti-HERC4 antibody ab85732

[1 References](#) [2 图像](#)

概述

产品名称	Anti-HERC4抗体
描述	兔多克隆抗体to HERC4
宿主	Rabbit
经测试应用	适用于: WB, IP
种属反应性	与反应: Mouse, Human 预测可用于: Rat, Rabbit, Horse, Guinea pig, Cow, Dog, Pig, Chimpanzee, Rhesus monkey, Gorilla, Orangutan 
免疫原	Synthetic peptide corresponding to a region between residue 1007 and 1057 of Human HERC4 (NP_071362.1).
阳性对照	Whole cell lysate from HeLa, 293T and mouse NIH3T3 cells.
常规说明	<p>The Life Science industry has been in the grips of a reproducibility crisis for a number of years. Abcam is leading the way in addressing this with our range of recombinant monoclonal antibodies and knockout edited cell lines for gold-standard validation. Please check that this product meets your needs before purchasing.</p> <p>If you have any questions, special requirements or concerns, please send us an inquiry and/or contact our Support team ahead of purchase. Recommended alternatives for this product can be found below, along with publications, customer reviews and Q&As</p>

性能

形式	Liquid
存放说明	Shipped at 4°C. Store at +4°C. Do Not Freeze.
存储溶液	pH: 7 Preservative: 0.09% Sodium azide Constituent: Tris citrate/phosphate
纯度	Immunogen affinity purified
克隆	多克隆
同种型	IgG

应用

The Abpromise guarantee

Abpromise™承诺保证使用ab85732于以下的经测试应用

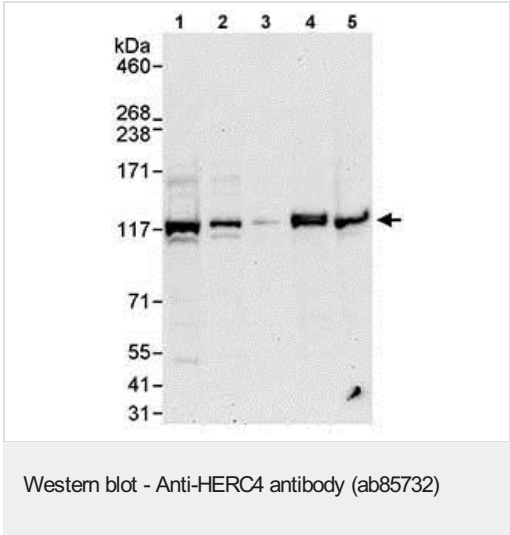
“应用说明”部分 下显示的仅为推荐的起始稀释度;实际最佳的稀释度/浓度应由使用者检定。

应用	Ab评论	说明
WB		1/2000 - 1/10000. Predicted molecular weight: 119 kDa.
IP		Use at 2-5 µg/mg of lysate.

靶标

功能	Probable E3 ubiquitin-protein ligase involved in either protein trafficking or in the distribution of cellular structures. Required for spermatozoon maturation and fertility, and for the removal of the cytoplasmic droplet of the spermatozoon. E3 ubiquitin-protein ligases accept ubiquitin from an E2 ubiquitin-conjugating enzyme in the form of a thioester and then directly transfer it to targeted substrates.
组织特异性	Expressed in brain and testis and detected in heart and placenta.
通路	Protein modification; protein ubiquitination.
序列相似性	Contains 1 HECT (E6AP-type E3 ubiquitin-protein ligase) domain. Contains 7 RCC1 repeats.
发展阶段	Expressed in fetal brain.
细胞定位	Cytoplasm > cytosol. shows a punctate cytoplasmic distribution.

图片



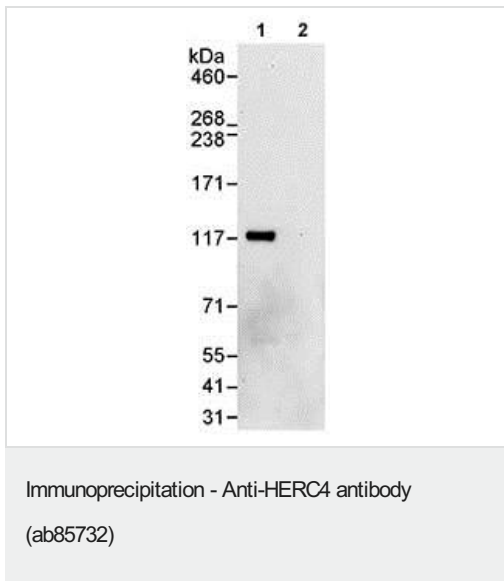
All lanes : Anti-HERC4 antibody (ab85732) at 0.1 µg/ml

- Lane 1 : Whole cell
lysate from HeLa cells at 50 µg
- Lane 2 : Whole cell
lysate from HeLa cells at 15 µg
- Lane 3 : Whole cell
lysate from HeLa cells at 5 µg
- Lane 4 : Whole cell
lysate from 293T cells at 50 µg
- Lane 5 : Whole cell
lysate from NIH3T3 cells at 50 µg

Developed using the ECL technique.

Predicted band size: 119 kDa
Observed band size: 119 kDa

Exposure time: 30 seconds



Detection of Human HERC4 in Immunoprecipitates of Whole cell lysate from HeLa cells (1 mg for IP, 20% of IP loaded) using ab85732 at 3 µg/mg lysate for IP (Lane 1) and at 1 µg/ml for subsequent Western blot detection. Lane 2 represents control IgG IP. Detection: Chemiluminescence with an exposure time of 30 seconds.

Please note: All products are "FOR RESEARCH USE ONLY. NOT FOR USE IN DIAGNOSTIC PROCEDURES"

Our Abpromise to you: Quality guaranteed and expert technical support

- Replacement or refund for products not performing as stated on the datasheet
- Valid for 12 months from date of delivery
- Response to your inquiry within 24 hours
- We provide support in Chinese, English, French, German, Japanese and Spanish
- Extensive multi-media technical resources to help you
- We investigate all quality concerns to ensure our products perform to the highest standards

If the product does not perform as described on this datasheet, we will offer a refund or replacement. For full details of the Abpromise, please visit <https://www.abcam.cn/abpromise> or contact our technical team.

Terms and conditions

- Guarantee only valid for products bought direct from Abcam or one of our authorized distributors