


Anti-Hemoglobin subunit zeta + Hemoglobin subunit alpha antibody [EP3607] ab109444

RabMAb

4 图像

概述

产品名称	Anti-Hemoglobin subunit zeta + Hemoglobin subunit alpha抗体[EP3607]
描述	兔单克隆抗体[EP3607] to Hemoglobin subunit zeta + Hemoglobin subunit alpha
宿主	Rabbit
特异性	Mouse and rat tissues tested (lung and kidney) gave negative or low sensitivity staining in IHC-P. This antibody may not be suitable for IHC with mouse or rat samples. If you have any questions, please contact our Scientific Support team.
经测试应用	适用于: WB, IHC-P 不适用于: Flow Cyt, ICC/IF or IP
种属反应性	与反应: Human 预测可用于: Mouse, Rat 
免疫原	Synthetic peptide. This information is proprietary to Abcam and/or its suppliers.
阳性对照	WB: K562, fetal liver, and fetal heart lysate. His-tagged full length human Hemoglobin subunit alpha and zeta recombinant protein. IHC-P: Human spleen and colon tissue.
常规说明	Our RabMAb [®] technology is a patented hybridoma-based technology for making rabbit monoclonal antibodies. For details on our patents, please refer to RabMAb[®] patents . The Life Science industry has been in the grips of a reproducibility crisis for a number of years. Abcam is leading the way in addressing this with our range of recombinant monoclonal antibodies and knockout edited cell lines for gold-standard validation. Please check that this product meets your needs before purchasing. If you have any questions, special requirements or concerns, please send us an inquiry and/or contact our Support team ahead of purchase. Recommended alternatives for this product can be found below, along with publications, customer reviews and Q&As

性能

形式	Liquid
存放说明	Shipped at 4°C. Store at -20°C. Stable for 12 months at -20°C.
存储溶液	pH: 7.20

	Preservative: 0.05% Sodium azide
	Constituents: 0.1% BSA, 40% Glycerol (glycerin, glycerine), 9.85% Tris glycine, 50% Tissue culture supernatant
纯度	Protein A purified
克隆	单克隆
克隆编号	EP3607
同种型	IgG

应用

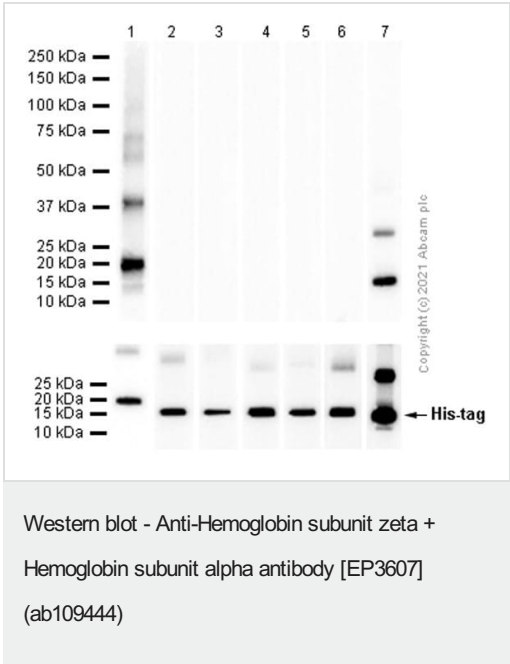
The Abpromise guarantee **Abpromise™**承诺保证使用ab109444于以下的经测试应用

“应用说明”部分 下显示的仅为推荐的起始稀释度;实际最佳的稀释度/浓度应由使用者检定。

应用	Ab评论	说明
WB		1/1000 - 1/10000. Detects a band of approximately 14 kDa (predicted molecular weight: 15 kDa).
IHC-P		1/250 - 1/500. Perform heat mediated antigen retrieval with citrate buffer pH 6 before commencing with IHC staining protocol. Antigen retrieval is recommended.

应用说明 Is unsuitable for Flow Cyt, ICC/IF or IP.

图片



All lanes : Anti-Hemoglobin subunit zeta + Hemoglobin subunit alpha antibody [EP3607] (ab109444) at 1/1000 dilution

Lane 1 : His-tagged full length human Hemoglobin subunit alpha recombinant protein([ab131697](#))

Lane 2 : His-tagged human Hemoglobin subunit beta/ba1 (aa3-147) recombinant protein

Lane 3 : His-tagged human Hemoglobin subunit delta (aa3-147) recombinant protein

Lane 4 : His-tagged human Hemoglobin subunit epsilon (aa3-147) recombinant protein

Lane 5 : His-tagged human Hemoglobin subunit Gamma-2 (aa2-147) recombinant protein

Lane 6 : His-tagged human Hemoglobin subunit Gamma-1 (aa2-147) recombinant protein

Lane 7 : His-tagged full length human Hemoglobin subunit Zeta recombinant protein([ab95347](#))

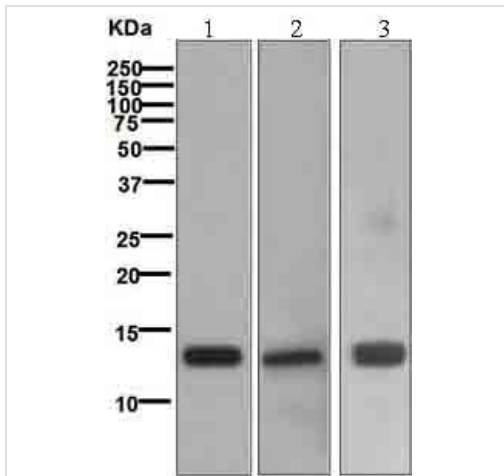
Lysates/proteins at 0.01 µg per lane.

Secondary

All lanes : Goat Anti-Rabbit IgG H&L (HRP) (**ab97051**) at 1/20000 dilution

Predicted band size: 15 kDa

Additional bands at: 14 kDa, 20 kDa. We are unsure as to the identity of these extra bands.



Western blot - Anti-Hemoglobin subunit zeta + Hemoglobin subunit alpha antibody [EP3607] (ab109444)

All lanes : Anti-Hemoglobin subunit zeta + Hemoglobin subunit alpha antibody [EP3607] (ab109444) at 1/1000 dilution

Lane 1 : K562 lysate

Lane 2 : Fetal liver lysate

Lane 3 : Fetal heart lysates

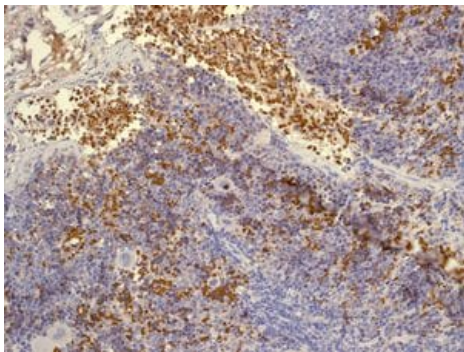
Lysates/proteins at 10 µg per lane.

Secondary

All lanes : Standard HRP labelled goat anti-rabbit at 1/2000 dilution

Predicted band size: 15 kDa

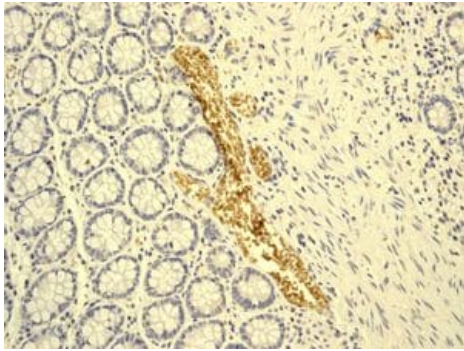
Observed band size: 14 kDa



Immunohistochemistry (Formalin/PFA-fixed paraffin-embedded sections) - Anti-Hemoglobin subunit zeta + Hemoglobin subunit alpha antibody [EP3607] (ab109444)

Immunohistochemical analysis of Hemoglobin subunit alpha and Hemoglobin subunit zeta in paraffin embedded human spleen tissue, using ab109444 at a 1/250 dilution.

Perform heat mediated antigen retrieval with citrate buffer pH 6 before commencing with IHC staining protocol.



Immunohistochemistry (Formalin/PFA-fixed paraffin-embedded sections) - Anti-Hemoglobin subunit zeta + Hemoglobin subunit alpha antibody [EP3607] (ab109444)

Immunohistochemical analysis of Hemoglobin subunit alpha and Hemoglobin subunit zeta in paraffin embedded human colon tissue, using ab109444 at a 1/250 dilution.

Perform heat mediated antigen retrieval with citrate buffer pH 6 before commencing with IHC staining protocol.

Please note: All products are "FOR RESEARCH USE ONLY. NOT FOR USE IN DIAGNOSTIC PROCEDURES"

Our Abpromise to you: Quality guaranteed and expert technical support

- Replacement or refund for products not performing as stated on the datasheet
- Valid for 12 months from date of delivery
- Response to your inquiry within 24 hours
- We provide support in Chinese, English, French, German, Japanese and Spanish
- Extensive multi-media technical resources to help you
- We investigate all quality concerns to ensure our products perform to the highest standards

If the product does not perform as described on this datasheet, we will offer a refund or replacement. For full details of the Abpromise, please visit <https://www.abcam.cn/abpromise> or contact our technical team.

Terms and conditions

- Guarantee only valid for products bought direct from Abcam or one of our authorized distributors