

Anti-Heme Oxygenase 1 antibody ab137749

★★★★★ [1 Abreviews](#) [26 References](#) [8 图像](#)

概述

产品名称	Anti-Heme Oxygenase 1抗体
描述	兔多克隆抗体to Heme Oxygenase 1
宿主	Rabbit
经测试应用	适用于: WB, IHC-P, ICC/IF
种属反应性	与反应: Mouse, Rat, Human
免疫原	Recombinant fragment, corresponding to a region within amino acids 1-278 of Human Heme Oxygenase 1.
阳性对照	H1299, HeLa, NIH-3T3, JC, BCL-1, C2C12 and Raw264.7 whole cell lysates, OV90 xenograft tissue.
常规说明	<p>The Life Science industry has been in the grips of a reproducibility crisis for a number of years. Abcam is leading the way in addressing this with our range of recombinant monoclonal antibodies and knockout edited cell lines for gold-standard validation. Please check that this product meets your needs before purchasing.</p> <p>If you have any questions, special requirements or concerns, please send us an inquiry and/or contact our Support team ahead of purchase. Recommended alternatives for this product can be found below, along with publications, customer reviews and Q&As</p>

性能

形式	Liquid
存放说明	Shipped at 4°C. Upon delivery aliquot. Store at -20°C or -80°C. Avoid freeze / thaw cycle.
存储溶液	<p>pH: 7.00</p> <p>Preservative: 0.025% Proclin 300</p> <p>Constituents: 79% PBS, 20% Glycerol (glycerin, glycerine)</p>
纯度	Immunogen affinity purified
克隆	多克隆
同种型	IgG

应用

The Abpromise guarantee

Abpromise™承诺保证使用ab137749于以下的经测试应用

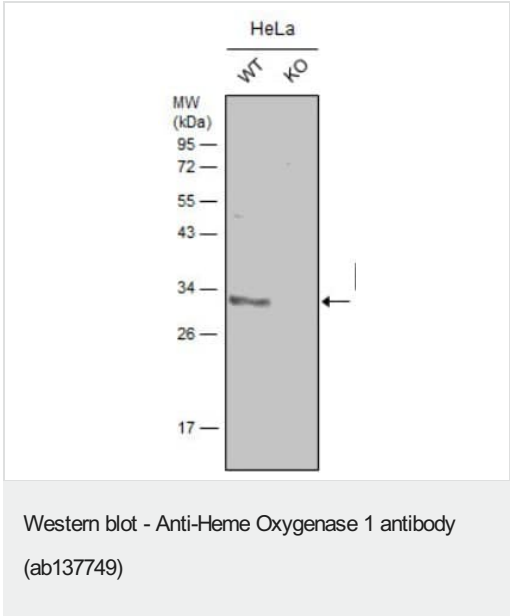
“应用说明”部分 下显示的仅为推荐的起始稀释度;实际最佳的稀释度/浓度应由使用者检定。

应用	Ab评论	说明
WB		1/500 - 1/3000. Predicted molecular weight: 33 kDa.
IHC-P		1/100 - 1/1000. Perform heat mediated antigen retrieval with citrate buffer pH 6 before commencing with IHC staining protocol. Alternatively antigen retrieval using heat mediated Tris/EDTA buffer (pH 8.0) may be used.
ICC/IF		1/100 - 1/1000.

靶标

功能	Heme oxygenase cleaves the heme ring at the alpha methene bridge to form biliverdin. Biliverdin is subsequently converted to bilirubin by biliverdin reductase. Under physiological conditions, the activity of heme oxygenase is highest in the spleen, where senescent erythrocytes are sequestrated and destroyed.
序列相似性	Belongs to the heme oxygenase family.
细胞定位	Microsome. Endoplasmic reticulum.

图片



All lanes : Anti-Heme Oxygenase 1 antibody (ab137749) at 1/500 dilution

Lane 1 : Wile-type HeLa cell lysate

Lane 2 : Knockout Hela cell lysates

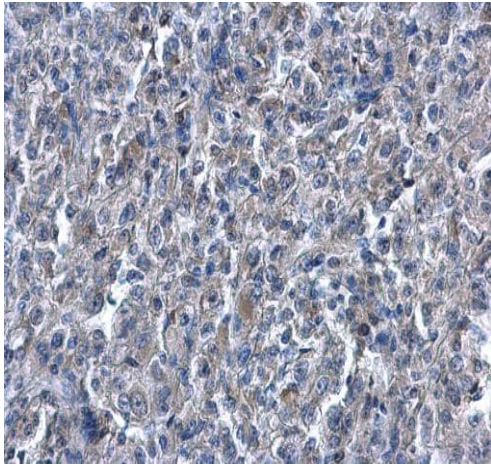
Lysates/proteins at 30 µg per lane.

Secondary

All lanes : HRP-conjugated anti-rabbit IgG antibody

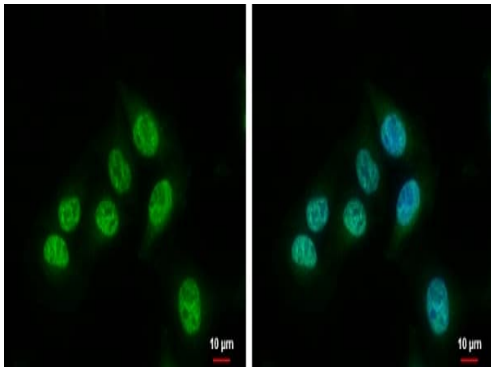
Predicted band size: 33 kDa

Observed band size: 33 kDa



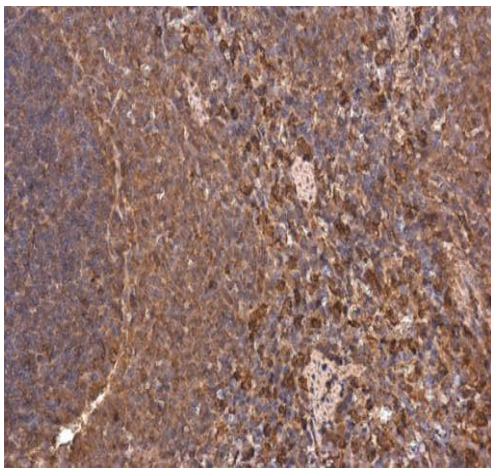
Immunohistochemical analysis of human renal carcinoma using ab137749 at 1/500.

Immunohistochemistry (Formalin/PFA-fixed paraffin-embedded sections) - Anti-Heme Oxygenase 1 antibody (ab137749)



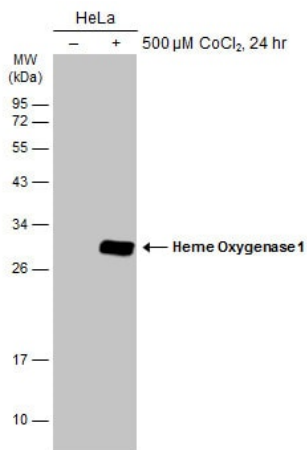
Immunofluorescent analysis of A375 cells were fixed in 4% paraformaldehyde at RT for 15 min.
 Green: ab137749 diluted at 1:500.
 Blue: Hoechst 33342 staining.

Immunocytochemistry/ Immunofluorescence - Anti-Heme Oxygenase 1 antibody (ab137749)



Immunohistochemistry (Formalin/PFA-fixed paraffin-embedded sections) - Anti-Heme Oxygenase 1 antibody (ab137749)

Immunohistochemical analysis of rat spleen using ab137749 at 1/500.



Western blot - Anti-Heme Oxygenase 1 antibody (ab137749)

All lanes : Anti-Heme Oxygenase 1 antibody (ab137749) at 1/5000 dilution

Lane 1 : Untreated HeLa whole cell extracts

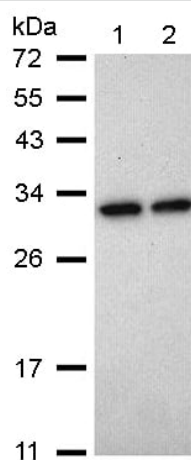
Lane 2 : Treated HeLa whole cell extracts

Lysates/proteins at 30 μg per lane.

Secondary

All lanes : HRP-conjugated anti-rabbit IgG antibody

Predicted band size: 33 kDa



Western blot - Anti-Heme Oxygenase 1 antibody (ab137749)

All lanes : Anti-Heme Oxygenase 1 antibody (ab137749) at 1/1000 dilution

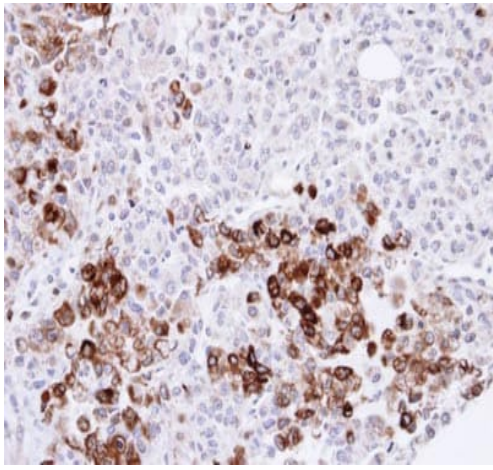
Lane 1 : H1299 cell lysate

Lane 2 : HeLa cell lysate

Lysates/proteins at 30 μg per lane.

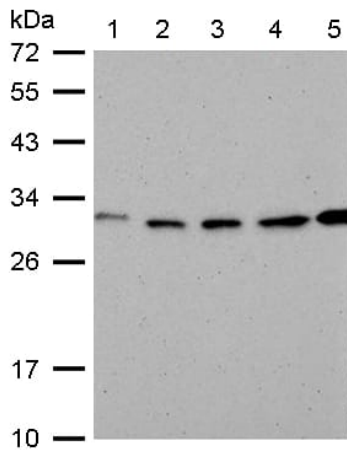
Predicted band size: 33 kDa

12% SDS PAGE



Immunohistochemical analysis of paraffin-embedded OV90 xenograft, labelling Heme Oxygenase 1 using ab137749 at 1/100 dilution.

Immunohistochemistry (Formalin/PFA-fixed paraffin-embedded sections) - Anti-Heme Oxygenase 1 antibody (ab137749)



Western blot - Anti-Heme Oxygenase 1 antibody (ab137749)

All lanes : Anti-Heme Oxygenase 1 antibody (ab137749) at 1/1000 dilution

Lane 1 : NIH-3T3 whole cell lysate

Lane 2 : JC whole cell lysate

Lane 3 : BCL1 whole cell lysate

Lane 4 : C2C12 whole cell lysate

Lane 5 : Raw 264.7 whole cell lysate

Lysates/proteins at 30 µg per lane.

Predicted band size: 33 kDa

12% SDS PAGE

Please note: All products are "FOR RESEARCH USE ONLY. NOT FOR USE IN DIAGNOSTIC PROCEDURES"

Our Abpromise to you: Quality guaranteed and expert technical support

- Replacement or refund for products not performing as stated on the datasheet
- Valid for 12 months from date of delivery
- Response to your inquiry within 24 hours
- We provide support in Chinese, English, French, German, Japanese and Spanish
- Extensive multi-media technical resources to help you

- We investigate all quality concerns to ensure our products perform to the highest standards

If the product does not perform as described on this datasheet, we will offer a refund or replacement. For full details of the Abpromise, please visit <https://www.abcam.cn/abpromise> or contact our technical team.

Terms and conditions

- Guarantee only valid for products bought direct from Abcam or one of our authorized distributors