


# Anti-heavy chain Myosin/MYH3 antibody ab124205

★★★★★ [4 Abreviews](#) [17 References](#) [3 图像](#)

### 概述

产品名称	Anti-heavy chain Myosin/MYH3抗体
描述	兔多克隆抗体to heavy chain Myosin/MYH3
宿主	Rabbit
特异性	Replenishment batches of our polyclonal antibody, ab124205 are tested in IHC-P. Previous batches were additionally validated in WB. This application is still expected to work and is covered by our Abpromise guarantee. You may also be interested in our alternative recombinant antibody, <a href="#">ab264038</a> .
经测试应用	适用于: WB, IHC-P
种属反应性	与反应: Mouse, Rat, Human 预测可用于: Rabbit, Chicken, Dog, Pig 
免疫原	Synthetic peptide corresponding to Human heavy chain Myosin/MYH3 aa 100-200 conjugated to keyhole limpet haemocyanin.
阳性对照	This antibody gave a positive signal in Human, Mouse and Rat Skeletal Muscle tissue lysates. IHC: Mouse Skeletal Muscle.
常规说明	<p>The Life Science industry has been in the grips of a reproducibility crisis for a number of years. Abcam is leading the way in addressing this with our range of recombinant monoclonal antibodies and knockout edited cell lines for gold-standard validation. Please check that this product meets your needs before purchasing.</p> <p>If you have any questions, special requirements or concerns, please send us an inquiry and/or contact our Support team ahead of purchase. Recommended alternatives for this product can be found below, along with publications, customer reviews and Q&amp;As</p>

### 性能

形式	Liquid
存放说明	Shipped at 4°C. Store at +4°C short term (1-2 weeks). Upon delivery aliquot. Store at -20°C or -80°C. Avoid freeze / thaw cycle.
存储溶液	pH: 7.40 Preservative: 0.02% Sodium azide Constituent: PBS

Batches of this product that have a concentration < 1mg/ml may have BSA added as a stabilising agent. If you would like information about the formulation of a specific lot, please contact our scientific support team who will be happy to help.

纯度	Immunogen affinity purified
克隆	多克隆
同种型	IgG

## 应用

### The Abpromise guarantee

**Abpromise™**承诺保证使用ab124205于以下的经测试应用

“应用说明”部分 下显示的仅为推荐的起始稀释度;实际最佳的稀释度/浓度应由使用者检定。

应用	Ab评论	说明
WB	★★★★★ (4)	Use a concentration of 1 µg/ml. Detects a band of approximately 223 kDa (predicted molecular weight: 223 kDa).
IHC-P		Use a concentration of 1 µg/ml.

## 靶标

**功能** Muscle contraction.

**疾病相关** Defects in MYH3 are the cause of distal arthrogryposis type 2A (DA2A) [MIM:193700]; also known as Freeman-Sheldon syndrome (FSS). Distal arthrogryposis is a clinically and genetically heterogeneous group of disorders characterized by bone anomalies and joint contractures of the hands and feet, causing medially overlapping fingers, clenched fists, ulnar deviation of fingers, camptodactyly and positional foot deformities. It is a disorder of primary limb malformation without primary neurologic or muscle disease. DA2A is the most severe form of distal arthrogryposis. Affected individuals have contractures of the orofacial muscles, characterized by microstomia with pouting lips, H-shaped dimpling of the chin, deep nasolabial folds, and blepharophimosis. Dysphagia, failure to thrive, growth deficit, and life-threatening respiratory complications (caused by structural anomalies of the oropharynx and upper airways) are frequent. Inheritance is autosomal dominant.

Defects in MYH3 are the cause of distal arthrogryposis type 2B (DA2B) [MIM:601680]; also known as Sheldon-Hall syndrome (SHS) or arthrogryposis multiplex congenita distal type 2B (AMCD2B). DA2B is a form of inherited multiple congenital contractures. Affected individuals have vertical talus, ulnar deviation in the hands, severe camptodactyly, and a distinctive face characterized by a triangular shape, prominent nasolabial folds, small mouth and a prominent chin. DA2B is the most common of the distal arthrogryposis syndromes. It is similar to DA2A but the facial contractures are less dramatic.

**序列相似性** Contains 1 IQ domain.

Contains 1 myosin head-like domain.

**发展阶段** Abundantly present in fetal skeletal muscle and not present or barely detectable in heart and adult skeletal muscle.

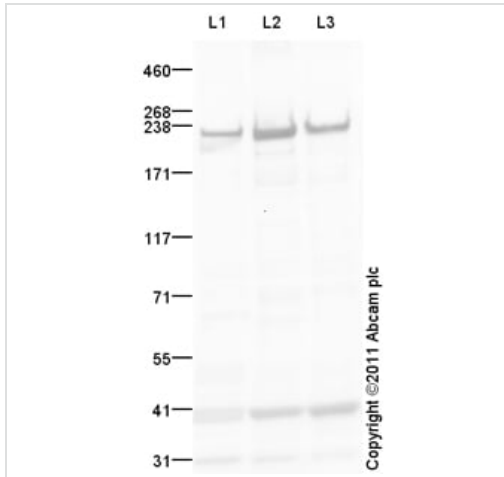
**结构域** The rodlike tail sequence is highly repetitive, showing cycles of a 28-residue repeat pattern composed of 4 heptapeptides, characteristic for alpha-helical coiled coils.  
Each myosin heavy chain can be split into 1 light meromyosin (LMM) and 1 heavy meromyosin

(HMM). It can later be split further into 2 globular subfragments (S1) and 1 rod-shaped subfragment (S2).

## 细胞定位

Cytoplasm > myofibril. Thick filaments of the myofibrils.

## 图片



Western blot - Anti-heavy chain Myosin/MYH3 antibody (ab124205)

**All lanes :** Anti-heavy chain Myosin/MYH3 antibody (ab124205) at 1 µg/ml

**Lane 1 :** Human skeletal muscle tissue lysate - total protein ([ab29330](#))

**Lane 2 :** Skeletal Muscle (Mouse) Tissue Lysate

**Lane 3 :** Skeletal Muscle (Rat) Tissue Lysate

Lysates/proteins at 10 µg per lane.

### Secondary

**All lanes :** Goat Anti-Rabbit IgG H&L (HRP) preadsorbed ([ab97080](#)) at 1/5000 dilution

Developed using the ECL technique.

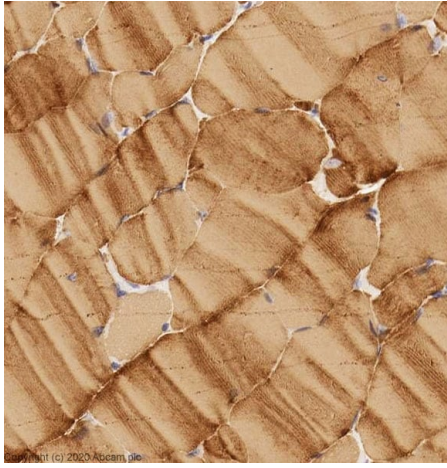
Performed under reducing conditions.

**Predicted band size:** 223 kDa

**Observed band size:** 223 kDa

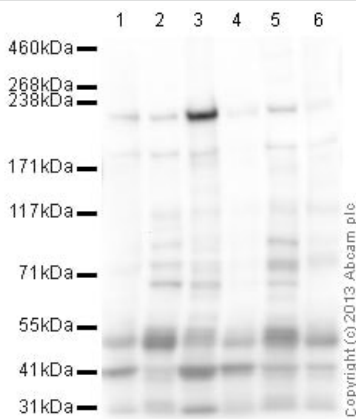
**Additional bands at:** 40 kDa. We are unsure as to the identity of these extra bands.

**Exposure time:** 30 seconds



Immunohistochemistry (Formalin/PFA-fixed paraffin-embedded sections) - Anti-heavy chain Myosin/MYH3 antibody (ab124205)

IHC image of Anti-heavy chain Myosin/MYH3 antibody staining in a section of formalin-fixed paraffin-embedded mouse skeletal muscle performed on a Leica BOND™ system using the standard protocol. The section was pre-treated using heat mediated antigen retrieval with sodium citrate buffer (pH6, epitope retrieval solution 1) for 20mins. The section was then incubated with ab124205, 1µg/ml, for 15 mins at room temperature and detected using an HRP conjugated compact polymer system. DAB was used as the chromogen. The section was then counterstained with haematoxylin and mounted with DPX.



Western blot - Anti-heavy chain Myosin/MYH3 antibody (ab124205)

**All lanes :** Anti-heavy chain Myosin/MYH3 antibody (ab124205) at 1 µg/ml

**Lane 1 :** Skeletal Muscle (Human) Tissue Lysate - fetal normal tissue

**Lane 2 :** Human heart tissue lysate - total protein ([ab29431](#))

**Lane 3 :** Human skeletal muscle tissue lysate - total protein ([ab29330](#))

**Lane 4 :** Human small intestine tissue lysate - total protein ([ab29276](#))

**Lane 5 :** Heart (Human) Tissue Lysate - fetal normal tissue

**Lane 6 :** Human skin tissue lysate - total protein ([ab30166](#))

Lysates/proteins at 10 µg per lane.

### Secondary

**All lanes :** Goat Anti-Rabbit IgG H&L (HRP) ([ab97051](#)) at 1/10000 dilution

Developed using the ECL technique.

Performed under reducing conditions.

**Predicted band size:** 223 kDa

**Observed band size:** 223 kDa

**Additional bands at:** 190 kDa, 40 kDa, 50 kDa. We are unsure as to the identity of these extra bands.

**Exposure time:** 30 seconds

**Please note:** All products are "FOR RESEARCH USE ONLY. NOT FOR USE IN DIAGNOSTIC PROCEDURES"

#### **Our Abpromise to you: Quality guaranteed and expert technical support**

---

- Replacement or refund for products not performing as stated on the datasheet
- Valid for 12 months from date of delivery
- Response to your inquiry within 24 hours
- We provide support in Chinese, English, French, German, Japanese and Spanish
- Extensive multi-media technical resources to help you
- We investigate all quality concerns to ensure our products perform to the highest standards

If the product does not perform as described on this datasheet, we will offer a refund or replacement. For full details of the Abpromise, please visit <https://www.abcam.cn/abpromise> or contact our technical team.

#### **Terms and conditions**

---

- Guarantee only valid for products bought direct from Abcam or one of our authorized distributors