

# Anti-HEATR6 antibody ab122131

## 3 图像

### 概述

产品名称	Anti-HEATR6抗体
描述	兔多克隆抗体to HEATR6
宿主	Rabbit
经测试应用	适用于: ICC/IF, WB, IHC-P
种属反应性	与反应: Human
免疫原	antigen, corresponding to amino acids 1052-1175 of Human HEATR6.
阳性对照	RT-4 and U-251 MG cell lysates; Human kidney tissue
常规说明	<p>The Life Science industry has been in the grips of a reproducibility crisis for a number of years. Abcam is leading the way in addressing this with our range of recombinant monoclonal antibodies and knockout edited cell lines for gold-standard validation. Please check that this product meets your needs before purchasing.</p> <p>If you have any questions, special requirements or concerns, please send us an inquiry and/or contact our Support team ahead of purchase. Recommended alternatives for this product can be found below, along with publications, customer reviews and Q&amp;As</p>

### 性能

形式	Liquid
存放说明	Shipped at 4°C. Upon delivery aliquot and store at -20°C. Avoid repeated freeze / thaw cycles.
存储溶液	<p>pH: 7.20</p> <p>Preservative: 0.02% Sodium azide</p> <p>Constituents: 59% PBS, 40% Glycerol (glycerin, glycerine)</p>
纯度	Immunogen affinity purified
克隆	多克隆
同种型	IgG

### 应用

#### The Abpromise guarantee

**Abpromise™** 承诺保证使用ab122131于以下的经测试应用

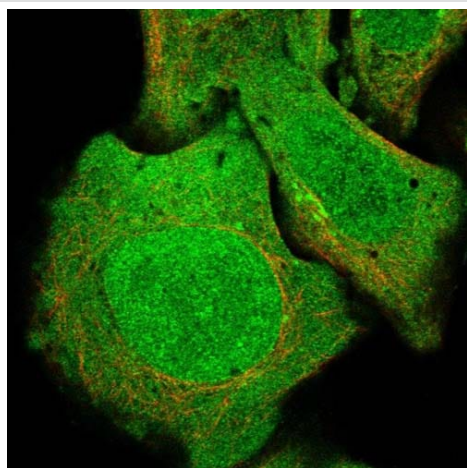
“应用说明”部分 下显示的仅为推荐的起始稀释度;实际最佳的稀释度/浓度应由使用者检定。

应用	Ab评论	说明
ICC/IF		Use a concentration of 1 - 4 µg/ml. Recommend PFA Fixation and Triton X-100 treatment
WB		Use a concentration of 0.04 - 0.4 µg/ml.
IHC-P		1/200 - 1/500. Perform heat mediated antigen retrieval with citrate buffer pH 6 before commencing with IHC staining protocol.

## 靶标

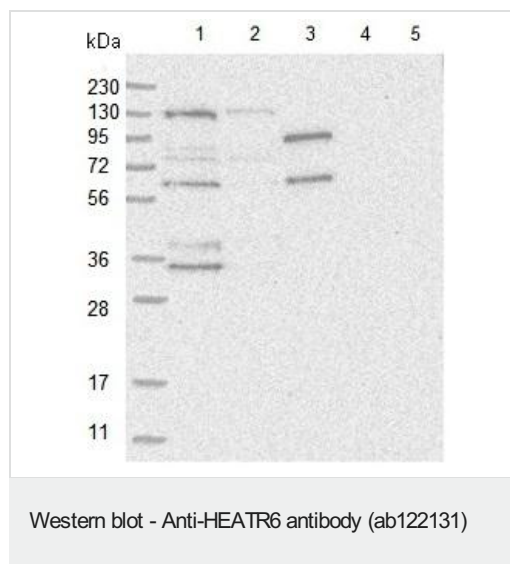
功能	Amplification-dependent oncogene.
组织特异性	Amplified in breast cancer cell lines MCF7 and BT474.
序列相似性	Contains 4 HEAT repeats.

## 图片



Immunofluorescent staining of Human cell line U-2 OS shows positivity in nucleus but not nucleoli, nuclear membrane, cytoplasm and golgi apparatus. Recommended concentration of ab122131 1-4 µg/ml. Cells treated with PFA/Triton X-100.

Immunocytochemistry/ Immunofluorescence - Anti-HEATR6 antibody (ab122131)



**All lanes :** Anti-HEATR6 antibody (ab122131) at 1/250 dilution

**Lane 1 :** RT-4 cell lysate

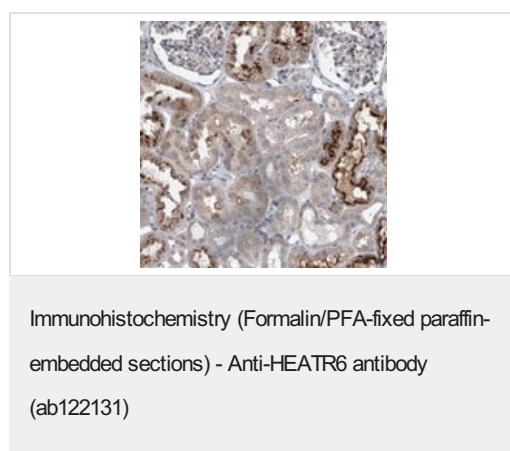
**Lane 2 :** U-251 MG cell lysate

**Lane 3 :** Human Plasma

**Lane 4 :** Human Liver lysate

**Lane 5 :** Human Tonsil lysate

Developed using the ECL technique.



ab122131, at a 1/200 dilution, staining HEATR6 in paraffin embedded Human kidney tissue by Immunohistochemistry.

**Please note:** All products are "FOR RESEARCH USE ONLY. NOT FOR USE IN DIAGNOSTIC PROCEDURES"

### Our Abpromise to you: Quality guaranteed and expert technical support

- Replacement or refund for products not performing as stated on the datasheet
- Valid for 12 months from date of delivery
- Response to your inquiry within 24 hours
- We provide support in Chinese, English, French, German, Japanese and Spanish
- Extensive multi-media technical resources to help you
- We investigate all quality concerns to ensure our products perform to the highest standards

If the product does not perform as described on this datasheet, we will offer a refund or replacement. For full details of the Abpromise, please visit <https://www.abcam.cn/abpromise> or contact our technical team.

### Terms and conditions

- Guarantee only valid for products bought direct from Abcam or one of our authorized distributors