

Anti-HCV subtype 1b NS5B antibody [10D6] ab100895

★★★★★ [2 Abreviews](#) [2 References](#) [2 图像](#)

概述

| | |
|-------|---|
| 产品名称 | Anti-HCV subtype 1b NS5B抗体[10D6] |
| 描述 | 小鼠单克隆抗体[10D6] to HCV subtype 1b NS5B |
| 宿主 | Mouse |
| 经测试应用 | 适用于: WB, IP, ELISA |
| 种属反应性 | 与反应: Hepatitis C virus |
| 免疫原 | Recombinant fragment: LSSKAVNHIRSVWKDLLEDT , corresponding to amino acids 111-130 of HCV subtype 1b NS5B Run BLAST with Run BLAST with |
| 阳性对照 | Huh7 cells harboring selectable subgenomic HCV RNA replicon |
| 常规说明 | <p>The Life Science industry has been in the grips of a reproducibility crisis for a number of years. Abcam is leading the way in addressing this with our range of recombinant monoclonal antibodies and knockout edited cell lines for gold-standard validation. Please check that this product meets your needs before purchasing.</p> <p>If you have any questions, special requirements or concerns, please send us an inquiry and/or contact our Support team ahead of purchase. Recommended alternatives for this product can be found below, along with publications, customer reviews and Q&As</p> |

性能

| | |
|------|---|
| 形式 | Liquid |
| 存放说明 | Shipped at 4°C. Upon delivery aliquot and store at -20°C. Avoid freeze / thaw cycles. |
| 存储溶液 | pH: 7.40 Preservative: 0.1% Sodium azide Constituent: PBS |
| 纯度 | Protein G purified |
| 克隆 | 单克隆 |
| 克隆编号 | 10D6 |
| 同种型 | IgG1 |

应用

The Abpromise guarantee

Abpromise™ 承诺保证使用ab100895于以下的经测试应用

“应用说明”部分 下显示的仅为推荐的起始稀释度;实际最佳的稀释度/浓度应由使用者检定。

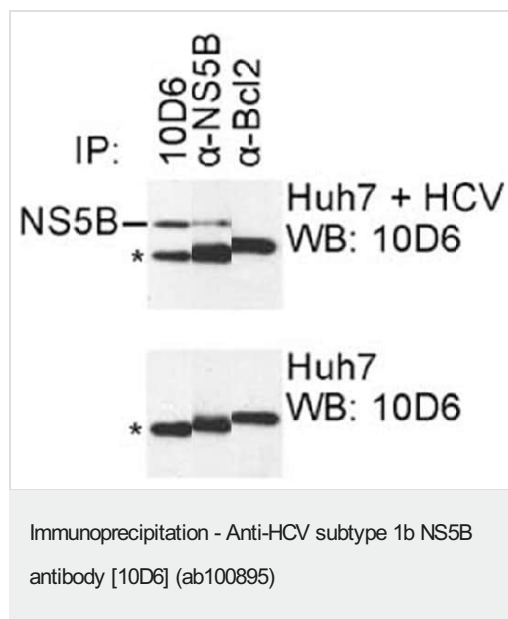
| 应用 | Ab评论 | 说明 |
|-------|-----------|---|
| WB | ★★★★★ (2) | 1/1000. Predicted molecular weight: 65 kDa. |
| IP | | Use at an assay dependent dilution. |
| ELISA | | 1/1000. |

靶标

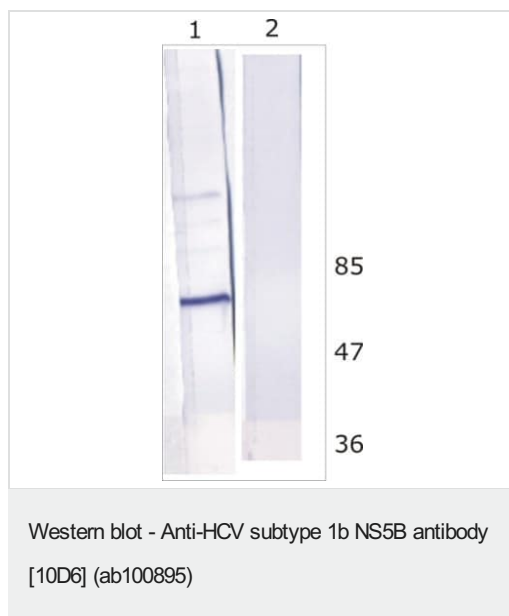
细胞定位

Host cytoplasm, nucleus, mitochondrion, endoplasmic reticulum; secreted.

图片



IP was carried out with ab100895 using the lysates of Huh7 cells harboring selectable subgenomic HCV RNA replicon (upper panel) or plain Huh7 cells (lower panel). NS5B polyclonal antibodies (-NS5B) and -Bcl2 mAb, directed against cellular protein, were used as positive and negative controls respectively. Asterisk indicates immunoglobulin heavy chain; protein blots were probed with ab100895.



All lanes : Anti-HCV subtype 1b NS5B antibody [10D6] (ab100895)

Lane 1 : Huh-7 transfected with HCV replicon

Lane 2 : Huh-7 nontransfected cells

Predicted band size: 65 kDa

Please note: All products are "FOR RESEARCH USE ONLY. NOT FOR USE IN DIAGNOSTIC PROCEDURES"

Our Abpromise to you: Quality guaranteed and expert technical support

- Replacement or refund for products not performing as stated on the datasheet
- Valid for 12 months from date of delivery
- Response to your inquiry within 24 hours
- We provide support in Chinese, English, French, German, Japanese and Spanish
- Extensive multi-media technical resources to help you
- We investigate all quality concerns to ensure our products perform to the highest standards

If the product does not perform as described on this datasheet, we will offer a refund or replacement. For full details of the Abpromise, please visit <https://www.abcam.cn/abpromise> or contact our technical team.

Terms and conditions

- Guarantee only valid for products bought direct from Abcam or one of our authorized distributors