

Anti-HA tag antibody ab13834

★★★★★ [3 Abreviews](#) [10 References](#) [1 图像](#)

概述

产品名称	Anti-HA tag抗体
描述	兔多克隆抗体to HA tag
宿主	Rabbit
经测试应用	适用于: WB
种属反应性	与反应: Species independent
免疫原	Synthetic peptide within HA tag conjugated to keyhole limpet haemocyanin. The exact sequence is proprietary. (Peptide available as ab13835)
阳性对照	WB: HEK-293 (Human) Whole Cell Lysate - expressing HA tag protein.
常规说明	<p>The Life Science industry has been in the grips of a reproducibility crisis for a number of years. Abcam is leading the way in addressing this with our range of recombinant monoclonal antibodies and knockout edited cell lines for gold-standard validation. Please check that this product meets your needs before purchasing.</p> <p>If you have any questions, special requirements or concerns, please send us an inquiry and/or contact our Support team ahead of purchase. Recommended alternatives for this product can be found below, along with publications, customer reviews and Q&As</p>

性能

形式	Liquid
存放说明	Shipped at 4°C. Store at +4°C short term (1-2 weeks). Upon delivery aliquot. Store at -20°C or -80°C. Avoid freeze / thaw cycle.
存储溶液	pH: 7.40 Preservative: 0.02% Sodium azide Constituent: PBS
纯度	Batches of this product that have a concentration < 1mg/ml may have BSA added as a stabilising agent. If you would like information about the formulation of a specific lot, please contact our scientific support team who will be happy to help.
克隆	多克隆

同种型

IgG

应用

The Abpromise guarantee

Abpromise™ 承诺保证使用 ab13834 于以下的经测试应用

“应用说明”部分 下显示的仅为推荐的起始稀释度;实际最佳的稀释度/浓度应由使用者检定。

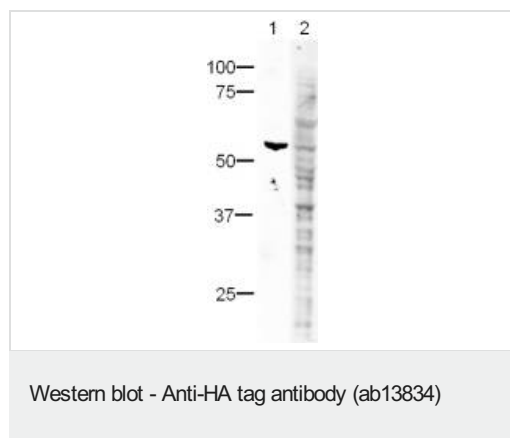
应用	Ab 评论	说明
WB	★★★★★ (2)	1/500. Can be blocked with HA tag peptide (ab13835) .

靶标

相关性

Human influenza hemagglutinin (HA) is a surface glycoprotein required for the infectivity of the human virus. The HA tag is derived from the HA molecule corresponding to amino acids 98-106 has been extensively used as a general epitope tag in expression vectors. Many recombinant proteins have been engineered to express the HA tag, which does not appear to interfere with the bioactivity or the biodistribution of the recombinant protein. This tag facilitates the detection, isolation, and purification of the proteins.

图片



All lanes : Anti-HA tag antibody (ab13834) at 1/500 dilution

Lane 1 : HEK-293 (Human) Whole Cell Lysate - expressing HA tag protein (**ab20896**)

Lane 2 : HEK-293 (Human) Whole Cell Lysate - expressing HA tag protein (**ab20896**) with HA tag peptide (**ab13835**) at 1 µg/ml

Lysates/proteins at 10 µg per lane.

Secondary

All lanes : Alexa Fluor 680 Goat-anti-Rabbit IgG at 1/5000 dilution

Performed under reducing conditions.

Please note: All products are "FOR RESEARCH USE ONLY. NOT FOR USE IN DIAGNOSTIC PROCEDURES"

Our Abpromise to you: Quality guaranteed and expert technical support

- Replacement or refund for products not performing as stated on the datasheet
- Valid for 12 months from date of delivery
- Response to your inquiry within 24 hours

- We provide support in Chinese, English, French, German, Japanese and Spanish
- Extensive multi-media technical resources to help you
- We investigate all quality concerns to ensure our products perform to the highest standards

If the product does not perform as described on this datasheet, we will offer a refund or replacement. For full details of the Abpromise, please visit <https://www.abcam.cn/abpromise> or contact our technical team.

Terms and conditions

- Guarantee only valid for products bought direct from Abcam or one of our authorized distributors