


Anti-GTF3C5 antibody ab74305

★★★★★ [1 Abreviews](#) [3 图像](#)

概述

产品名称	Anti-GTF3C5抗体
描述	兔多克隆抗体to GTF3C5
宿主	Rabbit
经测试应用	适用于: WB, IP, IHC-P
种属反应性	与反应: Mouse, Human 预测可用于: Rat, Rabbit, Horse, Chicken, Guinea pig, Cow, Dog, Turkey, Chimpanzee, Rhesus monkey, Gorilla, Orangutan, Platypus 
免疫原	Synthetic peptide from a region between residue 469 and 519 of human GTF3C5 (using the numbering given in entry NP_036219.1)
阳性对照	Lysate from HeLa, 293T or NIH3T3 cells
常规说明	<p>The Life Science industry has been in the grips of a reproducibility crisis for a number of years. Abcam is leading the way in addressing this with our range of recombinant monoclonal antibodies and knockout edited cell lines for gold-standard validation. Please check that this product meets your needs before purchasing.</p> <p>If you have any questions, special requirements or concerns, please send us an inquiry and/or contact our Support team ahead of purchase. Recommended alternatives for this product can be found below, along with publications, customer reviews and Q&As</p>

性能

形式	Liquid
存放说明	Shipped at 4°C. Upon delivery aliquot and store at -20°C. Avoid freeze / thaw cycles.
存储溶液	pH: 6.8 Preservative: 0.09% Sodium azide Constituents: 0.1% BSA, Tris buffered saline
纯度	Immunogen affinity purified
克隆	多克隆
同种型	IgG

应用

The Abpromise guarantee

Abpromise™ 承诺保证使用 ab74305 于以下的经测试应用

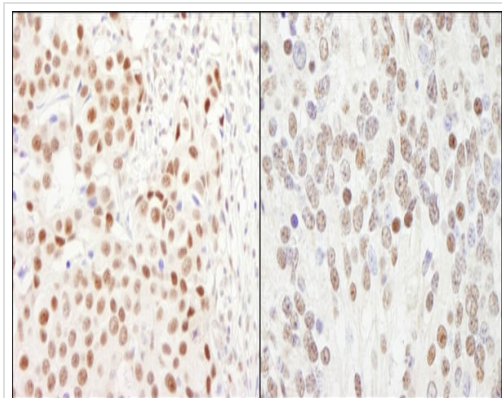
“应用说明”部分下显示的仅为推荐的起始稀释度；实际最佳的稀释度/浓度应由使用者检定。

应用	Ab评论	说明
WB		1/2000 - 1/10000. Predicted molecular weight: 60 kDa.
IP		Use at 2-5 µg/mg of lysate.
IHC-P		1/200 - 1/1000. Perform heat mediated antigen retrieval with citrate buffer pH 6 before commencing with IHC staining protocol.

靶标

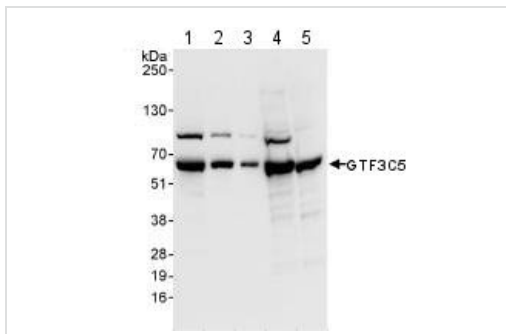
功能	Involved in RNA polymerase III-mediated transcription. Integral, tightly associated component of the DNA-binding TFIIIC2 subcomplex that directly binds tRNA and virus-associated RNA promoters.
序列相似性	Belongs to the TFIIIC subunit 5 family.
细胞定位	Nucleus.

图片



Immunohistochemistry (Formalin/PFA-fixed paraffin-embedded sections) analysis of human breast carcinoma (left) and mouse teratoma (right) tissues labelling GTF3C5 with ab74305 at 1/500 (0.4 µg/ml). Detection: DAB.

Immunohistochemistry (Formalin/PFA-fixed paraffin-embedded sections) - Anti-GTF3C5 antibody (ab74305)



Western blot - Anti-GTF3C5 antibody (ab74305)

All lanes : Anti-GTF3C5 antibody (ab74305) at 0.04 µg/ml

Lane 1 : HeLa whole cell lysate at 50 µg

Lane 2 : HeLa whole cell lysate at 15 µg

Lane 3 : HeLa whole cell lysate at 5 µg

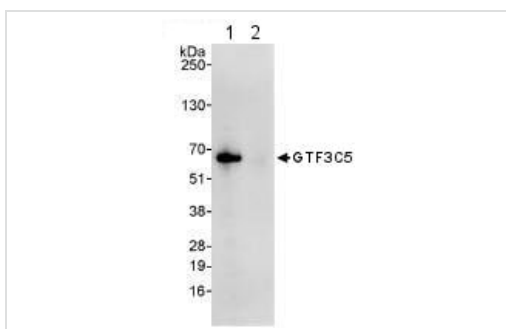
Lane 4 : 293T whole cell lysate at 50 µg

Lane 5 : NIH3T3 whole cell lysate at 50 µg

Predicted band size: 60 kDa

Observed band size: 60 kDa

Additional bands at: 90 kDa. We are unsure as to the identity of these extra bands.



Immunoprecipitation - Anti-GTF3C5 antibody (ab74305)

20% of immunoprecipitate obtained from 1mg HeLa whole cell lysate using 3µg ab74305 or a control IgG was loaded in lane 1 and 2 respectively. GTF3C5 was then detected by WB, using ab74305 at 1 µg/ml. Detection: Chemiluminescence with an exposure time of 1 second.

Please note: All products are "FOR RESEARCH USE ONLY. NOT FOR USE IN DIAGNOSTIC PROCEDURES"

Our Abpromise to you: Quality guaranteed and expert technical support

- Replacement or refund for products not performing as stated on the datasheet
- Valid for 12 months from date of delivery
- Response to your inquiry within 24 hours
- We provide support in Chinese, English, French, German, Japanese and Spanish
- Extensive multi-media technical resources to help you
- We investigate all quality concerns to ensure our products perform to the highest standards

If the product does not perform as described on this datasheet, we will offer a refund or replacement. For full details of the Abpromise, please visit <https://www.abcam.cn/abpromise> or contact our technical team.

Terms and conditions

- Guarantee only valid for products bought direct from Abcam or one of our authorized distributors